

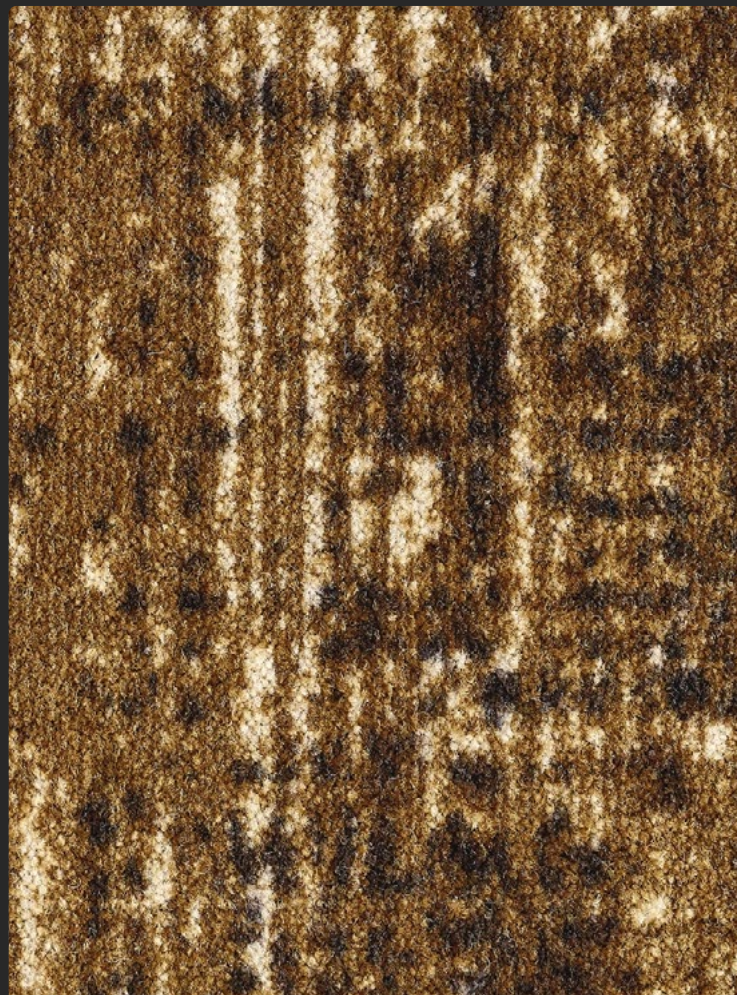
# Leone

COLORS BOOK

**RADICI**  
CARPET



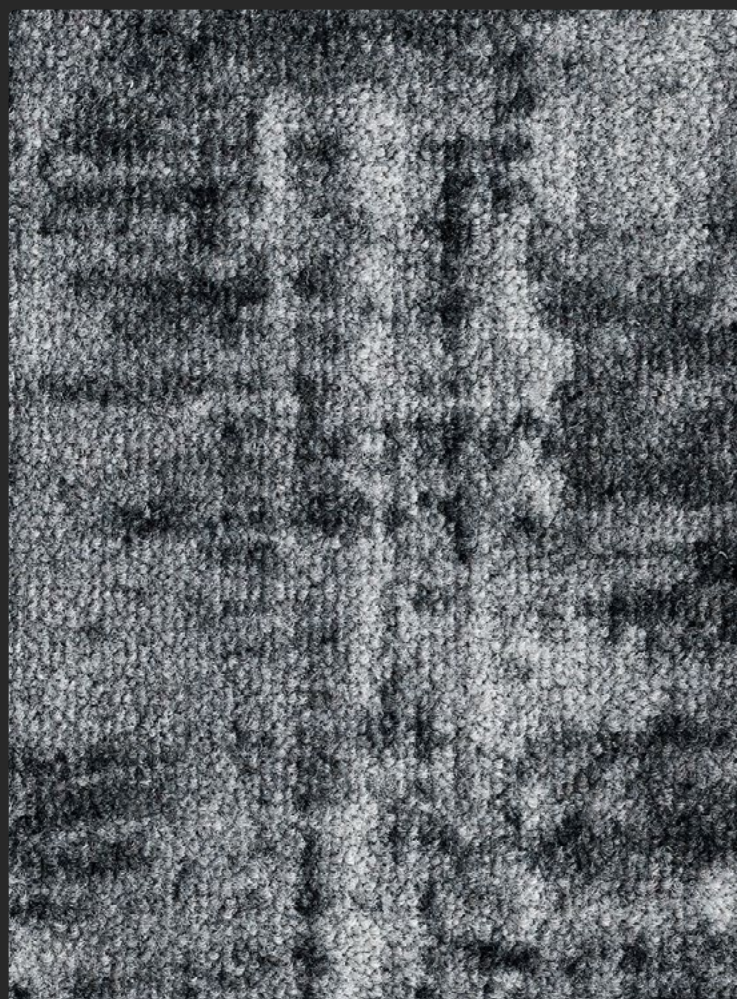
**Maple 25001**



**Nougat 25003**

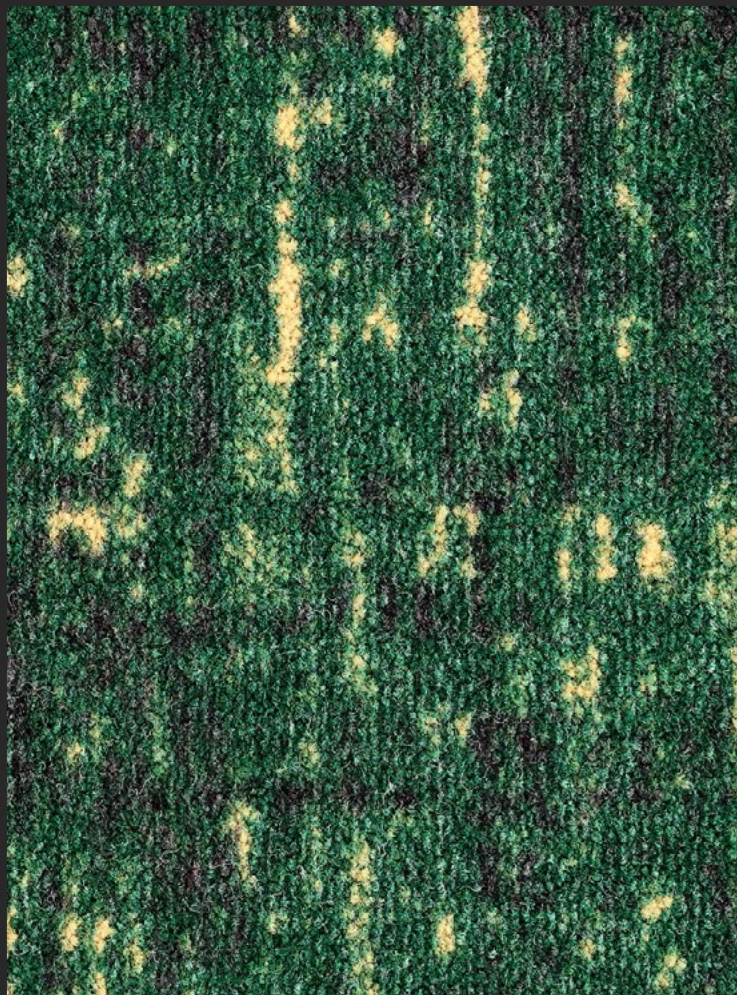


**Ginger 25004**



**Silver 25005**

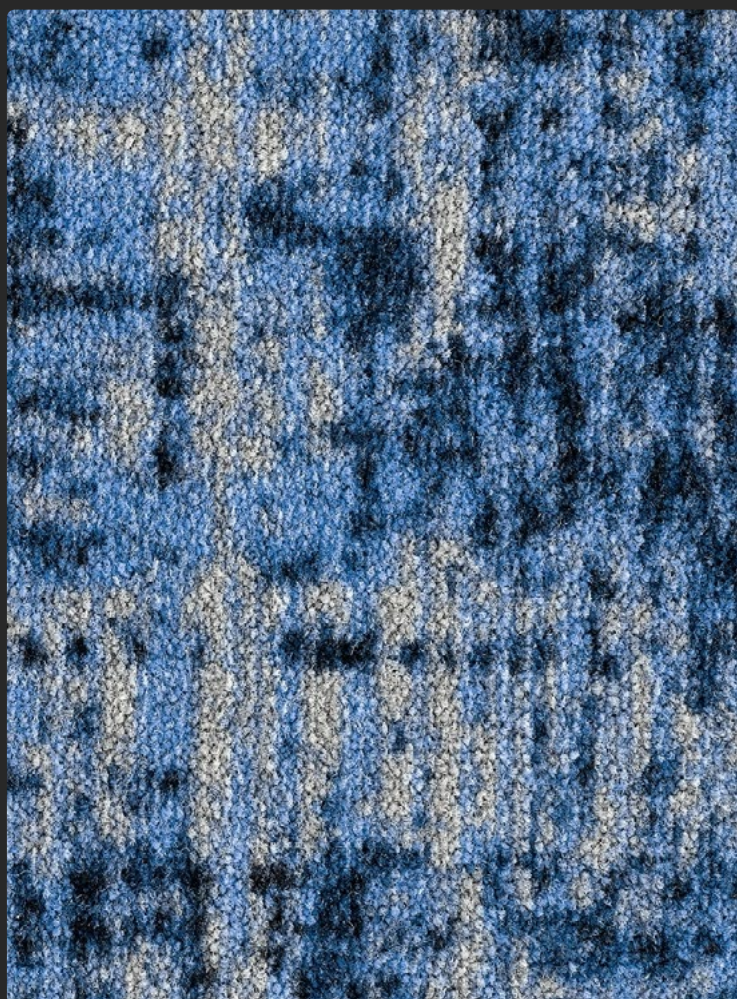
I colori reali possono variare. Ciò è dovuto all'incongruenza tra diversi monitor.  
Actual colors may vary. This is due to computer monitors displaying colors differently.



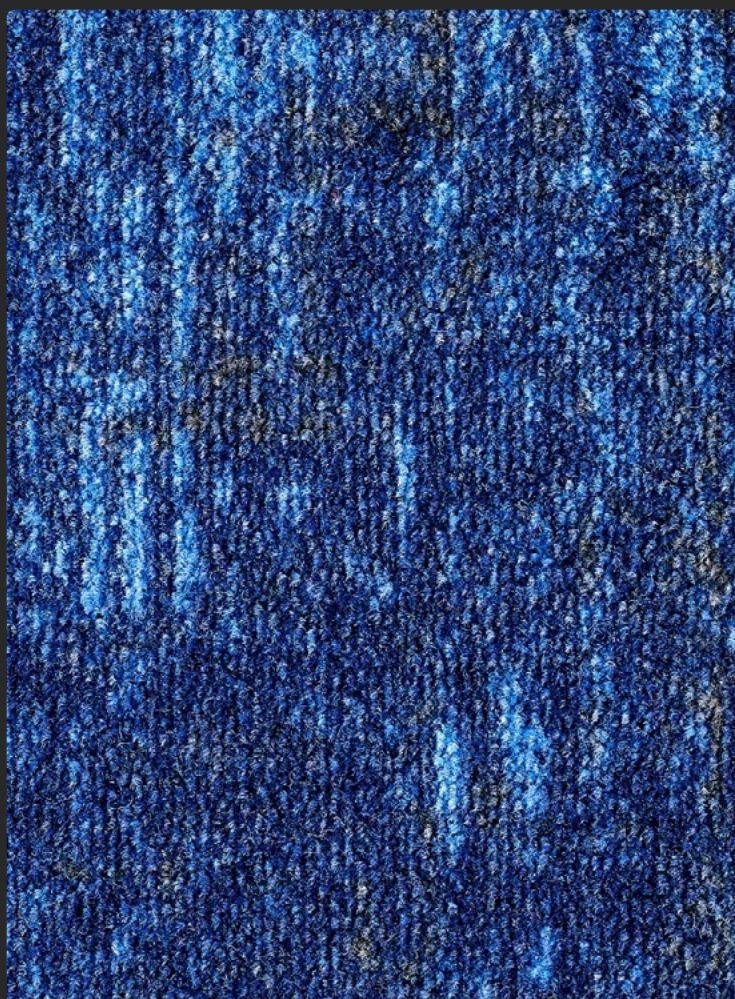
**Moss 25002**



**Ruby 25008**



**Denim 25009**



**Royal 25007**

I colori reali possono variare. Ciò è dovuto all'incongruenza tra diversi monitor.  
Actual colors may vary. This is due to computer monitors displaying colors differently.

# LEONE

**RADICI**  
CARPET



**ECONYL®**



Information sur le niveau d'émission de substances volatiles dans l'air intérieur, présentant un risque de toxicité par inhalation, sur une échelle de classe allant de A+ (très faibles émissions) à C (fortes émissions)

**STAINADVERSE**

CONSTRUZIONE	CONSTRUCTION	TECHNIQUE DE FABRICATION	HERSTELLUNGSVERFAHREN
TUFTING VELLUTO STAMPATO 1/10"	TUFTED CUT PILE PRINT 1/10"	TUFTED VELOURS IMPRIMÉ 1/10"	GETUFTED DRUCKVELOURS 1/10"
<b>COMPOSIZIONE</b>	<b>COMPOSITION</b>	<b>COMPOSITION</b>	<b>POLNUTZSCHICHT</b>
100% POLIAMMIDE 6-ECONYL	100% POLYAMIDE 6-ECONYL	100% POLYAMIDE 6-ECONYL	100% POLYAMID 6-ECONYL
<b>SOTTOFONDO</b>	<b>SECONDARY BACKING</b>	<b>DOSSIER</b>	<b>RÜCKENAUSRÜSTUNG</b>
JUTA SINTETICA	SYNTHETIC JUTE	JUTE SYNTHÉTIQUE	SDR TEXTILRUCKEN
<b>PUNTI AL M<sup>2</sup></b>	<b>STITCHES PER M<sup>2</sup></b>	<b>TOUFFES AU M<sup>2</sup></b>	<b>KNOTEN M<sup>2</sup></b>
± 209350	± 209350	± 209350	± 209350
<b>ALTEZZA PELO</b>	<b>PILE HEIGHT</b>	<b>HAUTEUR DU VELOURS</b>	<b>POLHÖHE</b>
± 5.5 mm	± 5.5 mm	± 5.5 mm	± 5.5 mm
<b>ALTEZZA TOTALE</b>	<b>TOTAL HEIGHT</b>	<b>HAUTEUR TOTALE</b>	<b>GESAMTHÖHE</b>
± 8.0 mm	± 8.0 mm	± 8.0 mm	± 8.0 mm
<b>PESO FIBRA</b>	<b>YARN WEIGHT</b>	<b>POIDS DU VELOURS</b>	<b>POLGEWICHT</b>
± 1000 g/m <sup>2</sup>	± 1000 g/m <sup>2</sup>	± 1000 g/m <sup>2</sup>	± 1000 g/m <sup>2</sup>
<b>PESO TOTALE</b>	<b>TOTAL WEIGHT</b>	<b>POIDS TOTAL</b>	<b>GESAMTGEWICHT</b>
± 2000 g/m <sup>2</sup>	± 2000 g/m <sup>2</sup>	± 2000 g/m <sup>2</sup>	± 2000 g/m <sup>2</sup>
<b>LARGHEZZA ROTOLO</b>	<b>ROLL WIDTH</b>	<b>LARGEUR DU ROLEAU</b>	<b>BREITE</b>
400 cm	400 cm	400 cm	400 cm
<b>FAMIGLIA TUFTING 1</b>	<b>FAMIGLIA TUFTING 1</b>	<b>FAMIGLIA TUFTING 1</b>	<b>FAMIGLIA TUFTING 1</b>



**COMFORT: ★★☆☆☆**

**BUSINESS WEARABILITY: ★★☆☆**

**DOMESTIC WEARABILITY: ★★☆☆**

Colour fastness to light	≥ 5	Thermal resistance m2 K/W	≤ 0,17
Insulation impact noise ΔLw	27 dB	Body voltage walking test kV	≤ 2
Acoustical absorption α <sub>w</sub>	0,20		

# RADICI

CARPET

RADICI PIETRO INDUSTRIES & BRANDS S.P.A.

---

[www.radicicarpet.it](http://www.radicicarpet.it) - [info@radicicarpet.it](mailto:info@radicicarpet.it) - +39 035 724242

in f Radici Carpet @ radicicarpet