

David

COLORS BOOK

RADICI
CARPET



Sand 25001



Milk 25002

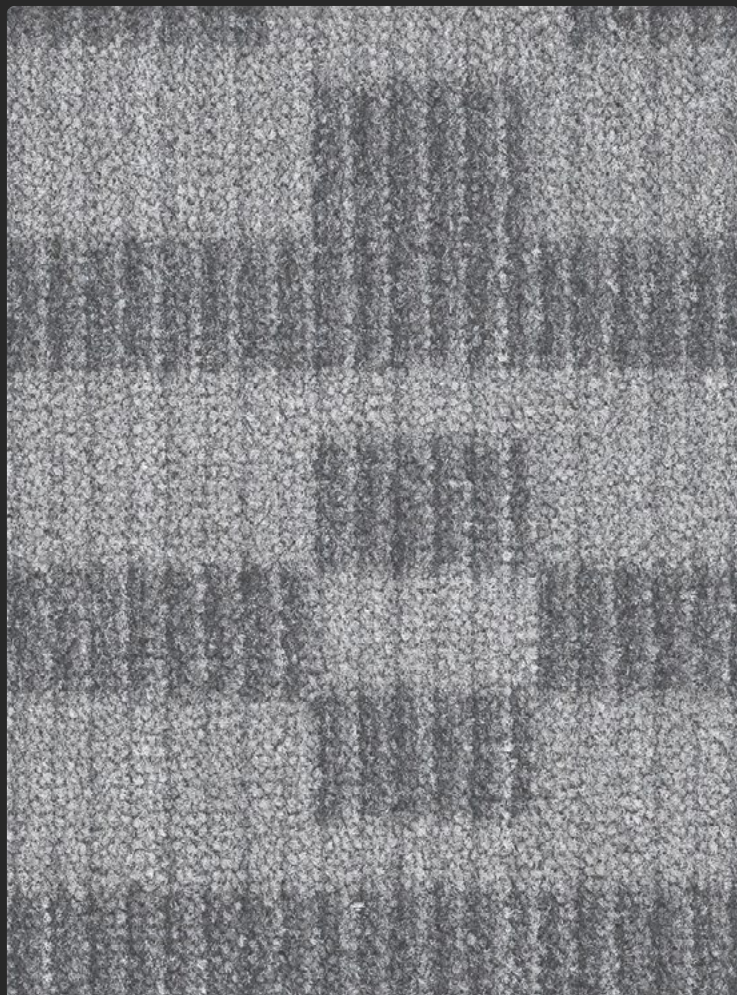


Nougat 25003

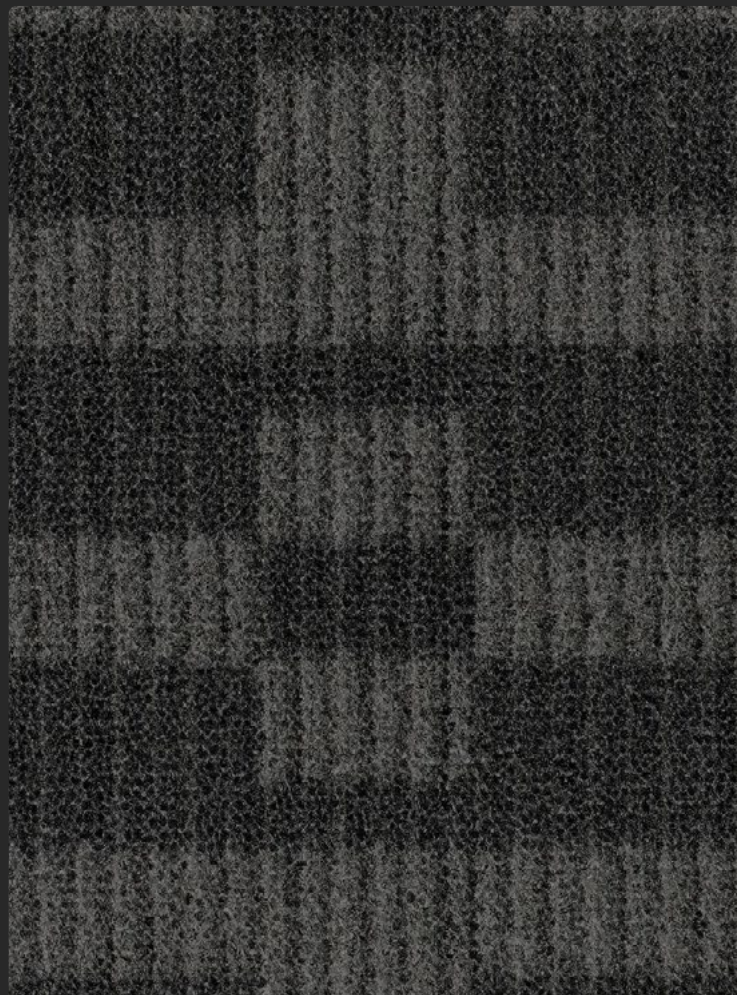


Moka 25004

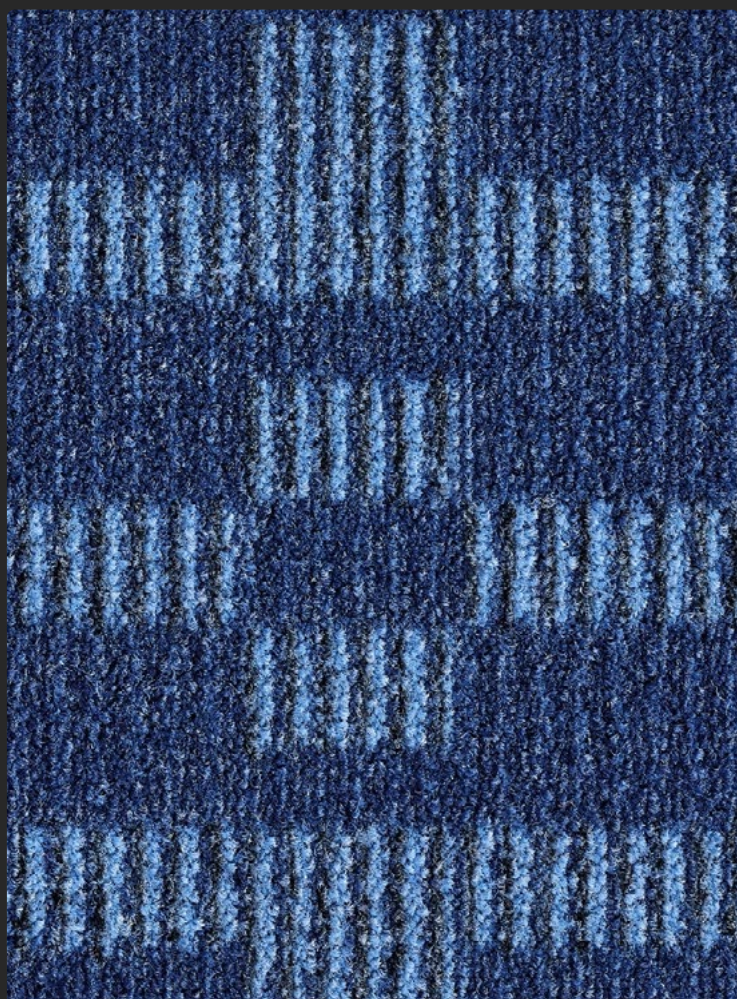
I colori reali possono variare. Ciò è dovuto all'incongruenza tra diversi monitor.
Actual colors may vary. This is due to computer monitors displaying colors differently.



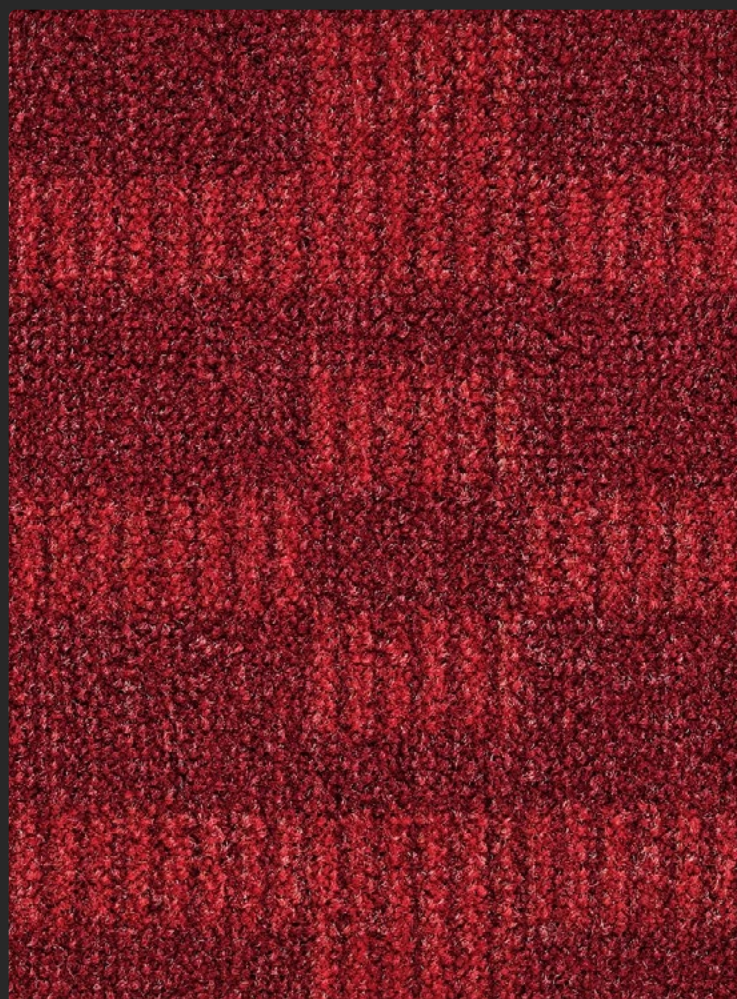
Silver 25005



Smoke 25006



Royal 25007



Ruby 25008

I colori reali possono variare. Ciò è dovuto all'incongruenza tra diversi monitor.
Actual colors may vary. This is due to computer monitors displaying colors differently.

DAVID

RADICI
CARPET



ECONYL®



Information sur le niveau d'émission de substances volatiles dans l'air intérieur, présentant un risque de toxicité par inhalation, sur une échelle de classe allant de A+ (très faibles émissions) à C (fortes émissions)

STAINADVERSE

CONSTRUZIONE	CONSTRUCTION	TECHNIQUE DE FABRICATION	HERSTELLUNGSVERFAHREN
TUFTING VELLUTO STAMPATO 1/10"	TUFTED CUT PILE PRINT 1/10"	TUFTED VELOURS IMPRIMÉ 1/10"	GETUFTED DRUCKVELOURS 1/10"
COMPOSIZIONE	COMPOSITION	COMPOSITION	POLNUTZSCHICHT
100% POLIAMMIDE 6-ECONYL	100% POLYAMIDE 6-ECONYL	100% POLYAMIDE 6-ECONYL	100% POLYAMID 6-ECONYL
SOTTOFONDO	SECONDARY BACKING	DOSSIER	RÜCKENAUSRÜSTUNG
JUTA SINTETICA	SYNTHETIC JUTE	JUTE SYNTHÉTIQUE	SDR TEXTILRUCKEN
PUNTI AL M ²	STITCHES PER M ²	TOUFFES AU M ²	KNOTEN M ²
± 209350	± 209350	± 209350	± 209350
ALTEZZA PELO	PILE HEIGHT	HAUTEUR DU VELOURS	POLHÖHE
± 5.5 mm	± 5.5 mm	± 5.5 mm	± 5.5 mm
ALTEZZA TOTALE	TOTAL HEIGHT	HAUTEUR TOTALE	GESAMTHÖHE
± 8.0 mm	± 8.0 mm	± 8.0 mm	± 8.0 mm
PESO FIBRA	YARN WEIGHT	POIDS DU VELOURS	POLGEWICHT
± 1000 g/m ²	± 1000 g/m ²	± 1000 g/m ²	± 1000 g/m ²
PESO TOTALE	TOTAL WEIGHT	POIDS TOTAL	GESAMTGEWICHT
± 2000 g/m ²	± 2000 g/m ²	± 2000 g/m ²	± 2000 g/m ²
LARGHEZZA ROTOLO	ROLL WIDTH	LARGEUR DU ROLEAU	BREITE
400 cm	400 cm	400 cm	400 cm
FAMIGLIA TUFTING 1	FAMIGLIA TUFTING 1	FAMIGLIA TUFTING 1	FAMIGLIA TUFTING 1



COMFORT: ★★☆☆☆

BUSINESS WEARABILITY: ★★☆☆

DOMESTIC WEARABILITY: ★★☆☆

Colour fastness to light	≥ 5	Thermal resistance m2 K/W	≤ 0,17
Insulation impact noise ΔLw	27 dB	Body voltage walking test kV	≤ 2
Acoustical absorption α _w	0,20		

RADICI

CARPET

RADICI PIETRO INDUSTRIES & BRANDS S.P.A.

www.radicicarpet.it - info@radicicarpet.it - +39 035 724242

in f Radici Carpet @ radicicarpet