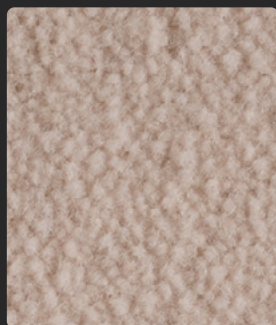


# Montecarlo

COLORS BOOK

**RADICI**  
CARPET



**Latte 10**



**Snow 50**



**Nougat 45**



**Vanilla 13**



**Straw 16**



**Cream 47**



**Riso 102**



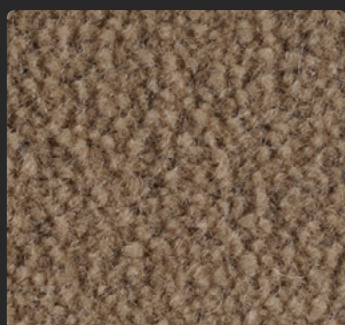
**Warmbeige 46**



**Oatmeal 36**



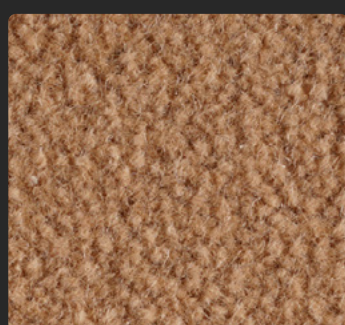
**Orchid 43**



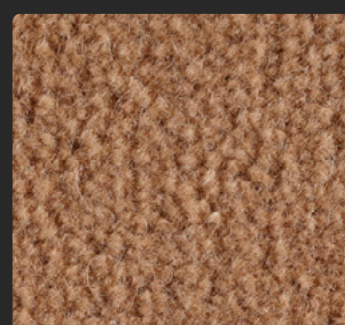
**Cardamomo 10**



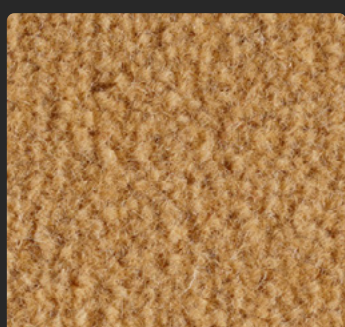
**Linen 39**



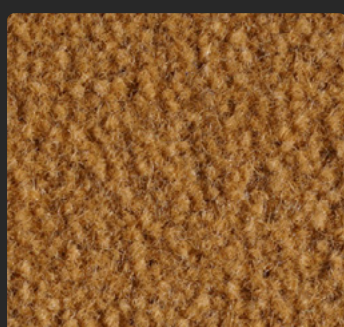
**Stone 37**



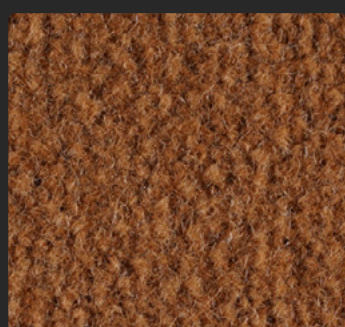
**Beech 44**



**Sand 15**



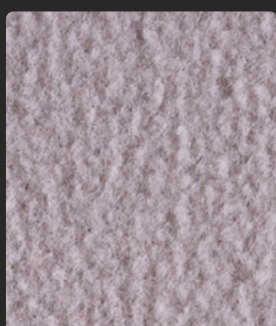
**Harvest 19**



**Walnut 52**



**Moka 56**



**Rafia 107**



**Avena 109**



**Fango 106**



**Choco 103**



**Bisonte 105**

I colori reali possono variare. Ciò è dovuto all'incongruenza tra diversi monitor.  
Actual colors may vary. This is due to computer monitors displaying colors differently.

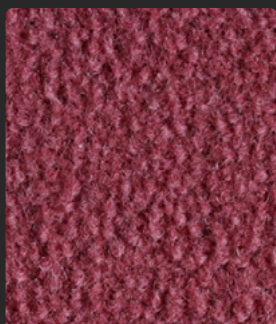




**Salmon 92**



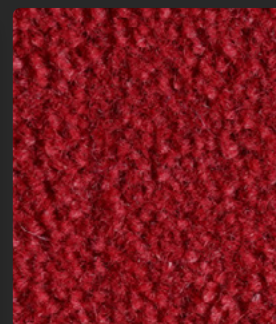
**Shellpink 9**



**Blush 4**



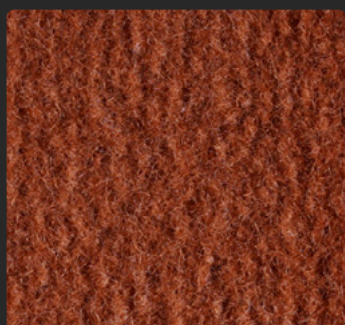
**Coral 5**



**Raspberry 10**



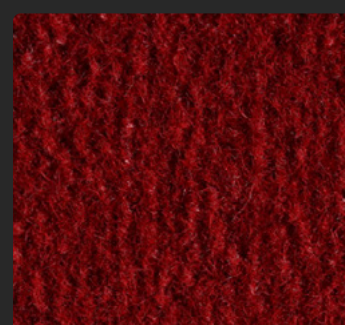
**Volcano 71**



**Ginger 59**



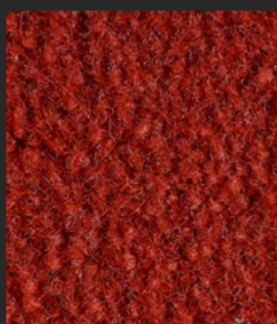
**Firefly 55**



**Flame 54**



**Mustard 20**



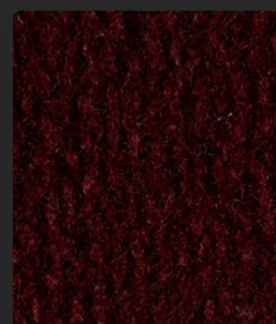
**Burnt Orange 53**



**Cardinal 1**



**Ruby 6**



**Bordeaux 3**



**Silver 86**



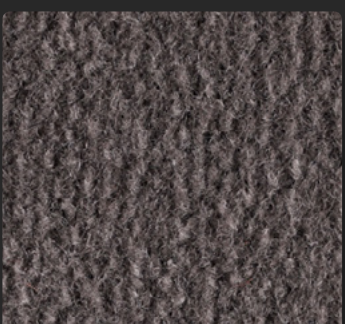
**Argent 80**



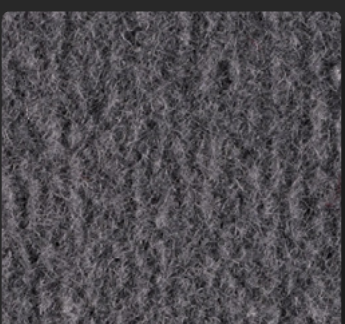
**Iris 81**



**Chinablue 21**



**Charcoal 83**



**Smoke 87**



**Ardesia 108**



**Jet 85**

I colori reali possono variare. Ciò è dovuto all'incongruenza tra diversi monitor.  
Actual colors may vary. This is due to computer monitors displaying colors differently.





**Willow 63**



**Softpine 72**



**Opal 64**



**Apple 79**



**Everglades 95**



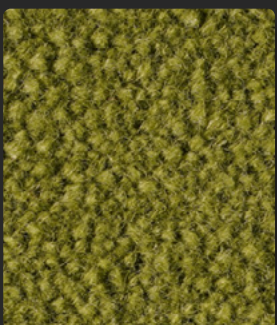
**Spearmint 76**



**Onyx 68**



**Acquamarine 65**



**Olive 77**



**Cedar 75**



**Lagon 99**



**Turquoise 93**



**Cornflower 28**



**Azure 26**



**Bluebird 27**



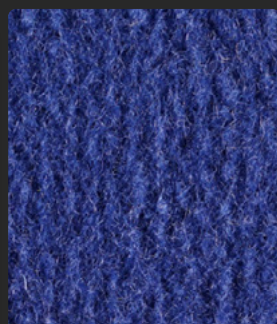
**Denim 24**



**Artic 25**



**Sapphire 98**



**Royal 34**



**Cobalt 32**



**Lilac 88**



**Parma 78**



**Purple 82**



**Midnight 33**



**Navy 35**

I colori reali possono variare. Ciò è dovuto all'incongruenza tra diversi monitor.  
Actual colors may vary. This is due to computer monitors displaying colors differently.



# MONTECARLO

**RADICI**  
CARPET

CE EN14041



Specifications and tolerances in according EN 1307



Information sur le niveau d'émission de substances volatiles dans l'air intérieur, présentant un risque de toxicité par inhalation, sur une échelle de classe allant de A+ (très faibles émissions) à C (fortes émissions)

STAINADVERSE



COSTRUZIONE	CONSTRUCTION	TECHNIQUE DE FABRICATION	HERSTELLUNGSVERFAHREN
TUFTING VELLUTO 1/8"	TUFTED CUT PILE 1/8"	TUFTED VELOURS 1/8"	GETUFTED VELOURS 1/8"
COMPOSIZIONE	COMPOSITION	COMPOSITION	POLNUTZSCHICHT
90% LANA 10% POLIESTERE	90% WOOL 10% POLYESTER	90% LAINE 10% POLYESTER	90% WOLLE 10% POLYESTER
SOTTOFONDO	SECONDARY BACKING	DOSSIER	RÜCKENAUSRÜSTUNG
JUTA SINTETICA	SYNTHETIC JUTE	JUTE SYNTHÉTIQUE	SDR TEXTILRUCKEN
PUNTI AL M <sup>2</sup>	STITCHES PER M <sup>2</sup>	TOUFFES AU M <sup>2</sup>	KNOTEN M <sup>2</sup>
± 126000	± 126000	± 126000	± 126000
ALTEZZA PELO	PILE HEIGHT	HAUTEUR DU VELOURS	POLHÖHE
± 6.3 mm	± 6.3 mm	± 6.3 mm	± 6.3 mm
ALTEZZA TOTALE	TOTAL HEIGHT	HAUTEUR TOTALE	GESAMTHÖHE
± 9 mm	± 9 mm	± 9 mm	± 9 mm
PESO FIBRA	YARN WEIGHT	POIDS DU VELOURS	POLGEWICHT
± 1250 g/m <sup>2</sup>	± 1250 g/m <sup>2</sup>	± 1250 g/m <sup>2</sup>	± 1250 g/m <sup>2</sup>
PESO TOTALE	TOTAL WEIGHT	POIDS TOTAL	GESAMTGEWICHT
± 2200 g/m <sup>2</sup>	± 2200 g/m <sup>2</sup>	± 2200 g/m <sup>2</sup>	± 2200 g/m <sup>2</sup>
LARGHEZZA ROTOLO	ROLL WIDTH	LARGEUR DU ROLEAU	BREITE
400 cm	400 cm	400 cm	400 cm
FAMIGLIA TUFTING 2	FAMIGLIA TUFTING 2	FAMIGLIA TUFTING 2	FAMIGLIA TUFTING 2

Note-Marine Equipment Fire certification: range certified



**COMFORT: ★★★★★**

**BUSINESS WEARABILITY: ★★☆☆**

**DOMESTIC WEARABILITY: ★★★☆☆**

Colour fastness to light	≥ 5 (4 PASTEL SHADE)	Thermal resistance m2 K/W	≤ 0,17
Insulation impact noise ΔLw	32 dB	Body voltage walking test kV	≤ 2
Acoustical absorption α <sub>w</sub>	0,23		

Radici Pietro Industries & Brands Spa - 24026 Cazzano Sant'Andrea (BG) Italia - www.radicicarpet.it - info@radicicarpet.it

Radici Pietro I&B. reserves the right to modify the characteristics of the product while keeping the same technical properties

**TSO1/2023**

# RADICI

CARPET

RADICI PIETRO INDUSTRIES & BRANDS S.P.A.

---

[www.radicicarpet.it](http://www.radicicarpet.it) - [info@radicicarpet.it](mailto:info@radicicarpet.it) - +39 035 724242

in  Radici Carpet  [radicicarpet](https://www.instagram.com/radicicarpet)