



# ELITE

**RADICI**  
CARPET





# MAREA / VIENNESE

COSTRUZIONE	CONSTRUCTION	TECHNIQUE DU FABRICATION	HERSTELLUNGSVERFAHREN	
WILTON JAQ. SCOLPITO	WILTON JAQ. SCULPTED	WILTON JAQ. SCULPTÉ	WILTON JAQ. GEFORMT	
COMPOSIZIONE	COMPOSITION	COMPOSITION	POLNUTZSCHICHT	
100% LANA	100% WOOL	100% LAINE	100% WOLLE	
SOTTOFONDO	SECONDARY BACKING	DOSSIER	RÜCKENAUSRÜSTUNG	
JUTA NATURALE/ SINTETICA	NATURAL / SYNTHETIC JUTE	JUTE NATUREL / SYNTHÉTIQUE	NATURJUTE / SYNTHETIK	
PUNTI AL m <sup>2</sup>	STITCHES PER m <sup>2</sup>	TOUFFES AU m <sup>2</sup>	KNOTEN m <sup>2</sup>	
± 93.000	± 93.000	± 93.000	± 93.000	
ALTEZZA PELO	PILE HEIGHT	HAUTEUR DU VELOURS	POLHÖHE	
± 7 mm	± 7 mm	± 7 mm	± 7 mm	
ALTEZZA TOTALE	TOTAL HEIGHT	HAUTEUR TOTALE	GESAMTHÖHE	
± 9 mm	± 9 mm	± 9 mm	± 9 mm	
PESO FIBRA	YARN WEIGHT	POIDS DU VELOURS	POLGEWICHT	
± 1.530 g/m <sup>2</sup>	± 1.530 g/m <sup>2</sup>	± 1.530 g/m <sup>2</sup>	± 1.530 g/m <sup>2</sup>	
PESO TOTALE	TOTAL WEIGHT	POIDS TOTAL	GESAMTGEWICHT	
± 2.480 g/m <sup>2</sup>	± 2.480 g/m <sup>2</sup>	± 2.480 g/m <sup>2</sup>	± 2.480 g/m <sup>2</sup>	
LARGHEZZA ROTOLO	ROLL WIDTH	LARGEUR DU ROLEAU	BREITE	
400 cm	400 cm	400 cm	400 cm	
WILTON 100% LANA	WILTON 100% WOOL	WILTON 100% LAINE	WILTON 100% WOLLE	

COL. FASTNESS TO LIGHT  
≥ 5 (4 pastel shade)

INSULATION IMPACT NOISE  
ΔLw 36 db

ACOUST. ABSORPTION aw  
0,28

THERMAL RES. M<sup>2</sup> K/W  
≤ 0,17

BODY VOLT. WALK TEST kV  
≤ 2

# LEVANTE

COSTRUZIONE	CONSTRUCTION	TECHNIQUE DU FABRICATION	HERSTELLUNGSVERFAHREN	
WILTON JAQ. SCOLPITO	WILTON JAQ. SCULPTED	WILTON JAQ. SCULPTÉ	WILTON JAQ. GEFORMT	
COMPOSIZIONE	COMPOSITION	COMPOSITION	POLNUTZSCHICHT	
100% LANA	100% WOOL	100% LAINE	100% WOLLE	
SOTTOFONDO	SECONDARY BACKING	DOSSIER	RÜCKENAUSRÜSTUNG	
JUTA NATURALE/ SINTETICA	NATURAL / SYNTHETIC JUTE	JUTE NATUREL / SYNTHÉTIQUE	NATURJUTE / SYNTHETIK	
PUNTI AL m <sup>2</sup>	STITCHES PER m <sup>2</sup>	TOUFFES AU m <sup>2</sup>	KNOTEN m <sup>2</sup>	
± 90.000	± 90.000	± 90.000	± 90.000	
ALTEZZA PELO	PILE HEIGHT	HAUTEUR DU VELOURS	POLHÖHE	
± 8 mm	± 8 mm	± 8 mm	± 8 mm	
ALTEZZA TOTALE	TOTAL HEIGHT	HAUTEUR TOTALE	GESAMTHÖHE	
± 10 mm	± 10 mm	± 10 mm	± 10 mm	
PESO FIBRA	YARN WEIGHT	POIDS DU VELOURS	POLGEWICHT	
± 1.750 g/m <sup>2</sup>	± 1.750 g/m <sup>2</sup>	± 1.750 g/m <sup>2</sup>	± 1.750 g/m <sup>2</sup>	
PESO TOTALE	TOTAL WEIGHT	POIDS TOTAL	GESAMTGEWICHT	
± 2.550 g/m <sup>2</sup>	± 2.550 g/m <sup>2</sup>	± 2.550 g/m <sup>2</sup>	± 2.550 g/m <sup>2</sup>	
LARGHEZZA ROTOLO	ROLL WIDTH	LARGEUR DU ROLEAU	BREITE	
400 cm	400 cm	400 cm	400 cm	
WILTON 100% LANA	WILTON 100% WOOL	WILTON 100% LAINE	WILTON 100% WOLLE	

COL. FASTNESS TO LIGHT  
≥ 5 (4 pastel shade)

INSULATION IMPACT NOISE  
ΔLw 36 db

ACOUST. ABSORPTION aw  
0,28

THERMAL RES. M<sup>2</sup> K/W  
≤ 0,17

BODY VOLT. WALK TEST kV  
≤ 2



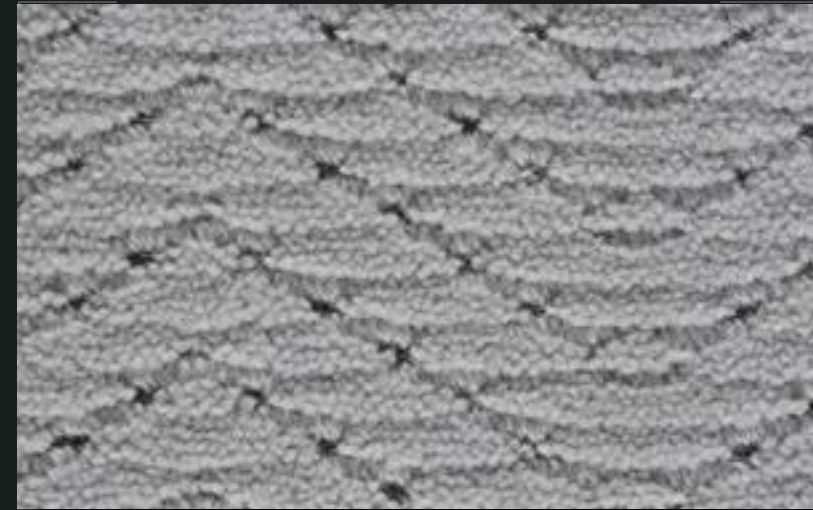
MAREA



BIANCO - 7210



BEIGE - 4129



GIADA - 3955



COBALTO - 20319

MAREA



STEEL GREY - 5729



PLUMBEO - 5751



ANTRACITE - 5750



NERO - 6035

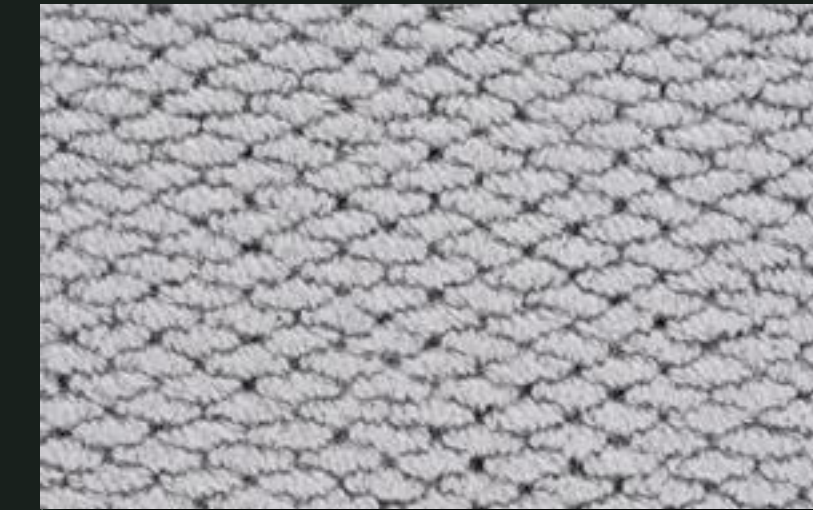
LEV ANTE



BIANCO - 7210



BEIGE - 4129



GIADA - 3955



COBALTO - 20319



STEEL GREY - 5729



PLUMBEO - 5751



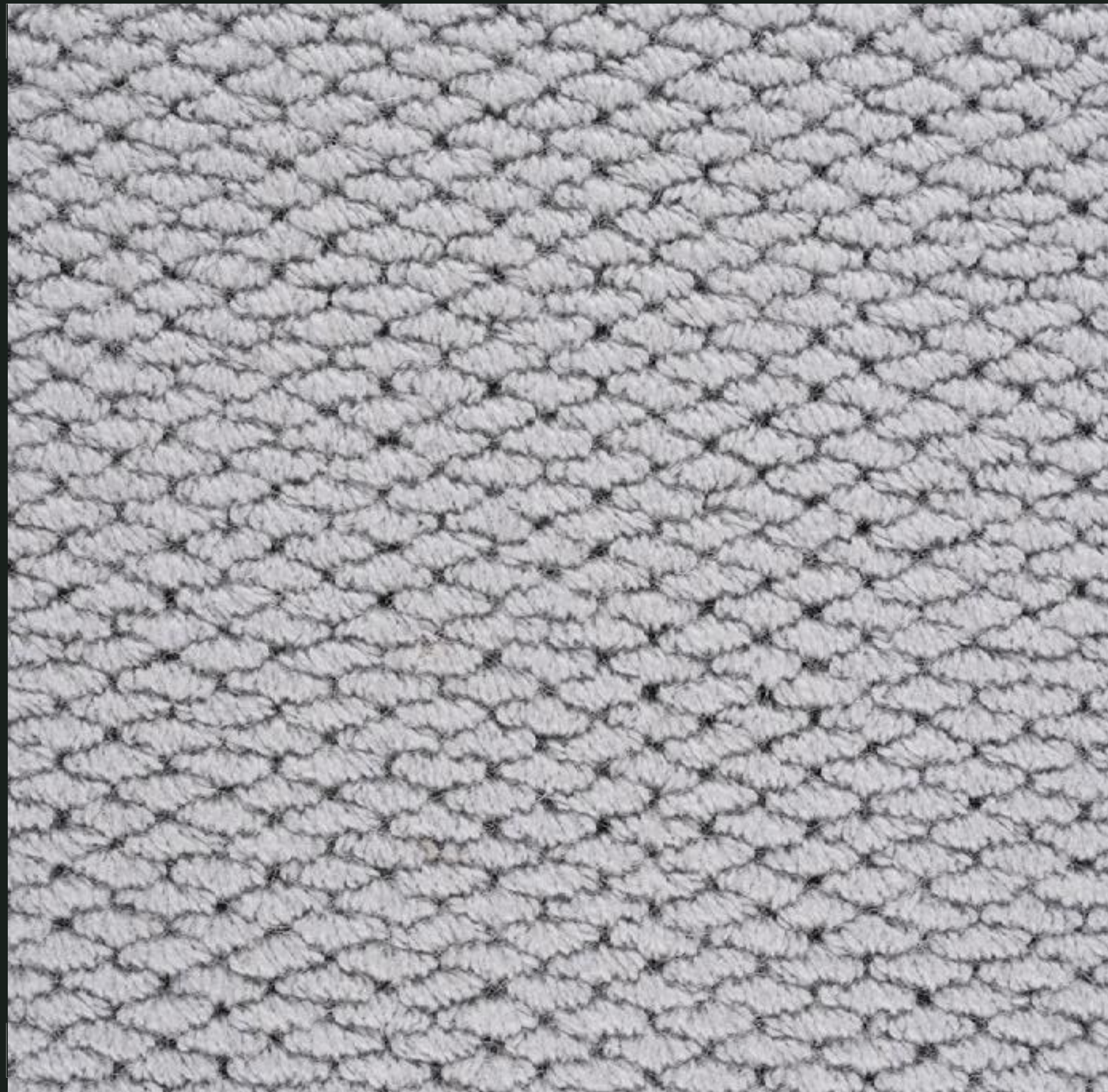
ANTRACITE - 5750



NERO - 6035



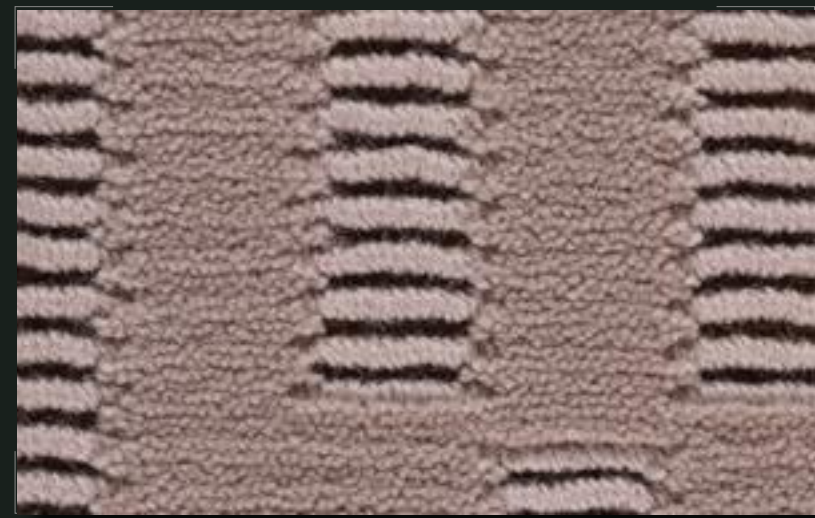
LEV ANTE



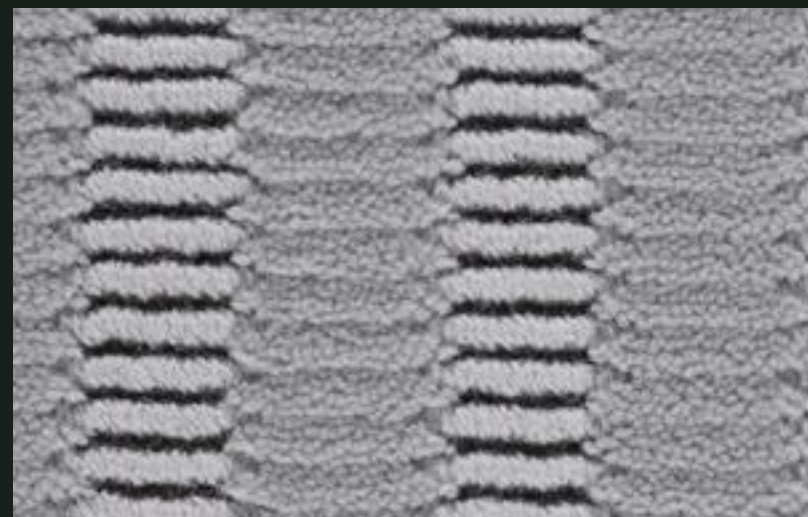
VIENNESE



BIANCO - 7210



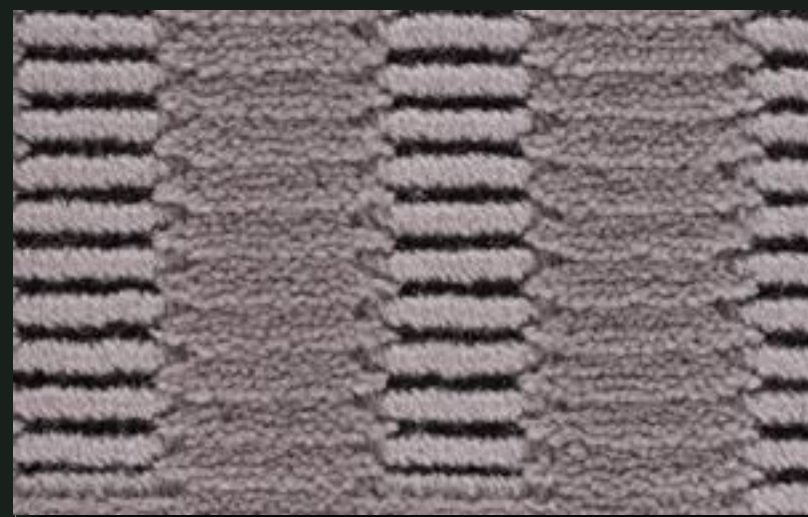
BEIGE - 4129



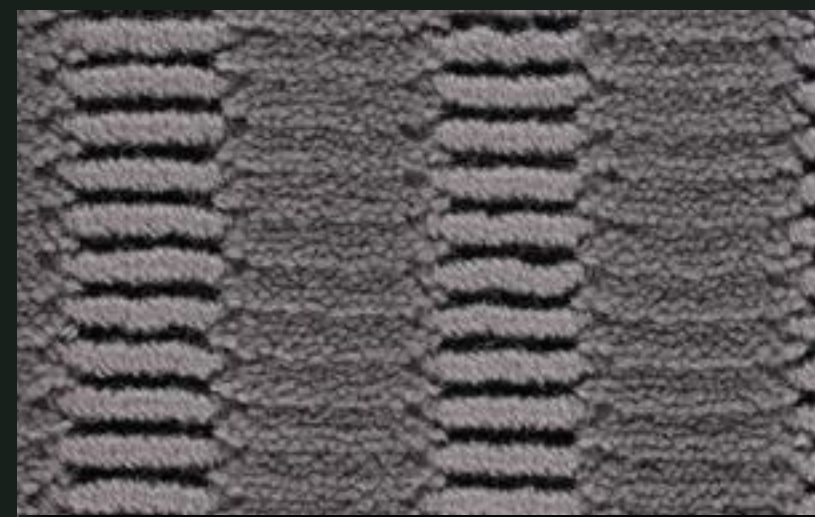
GIADA - 3955



COBALTO - 20319



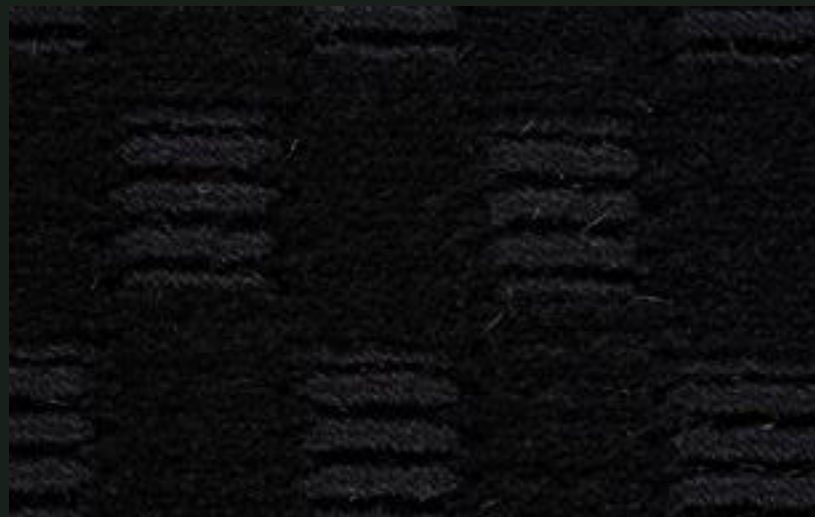
STEEL GREY - 5729



PLUMBEO - 5751

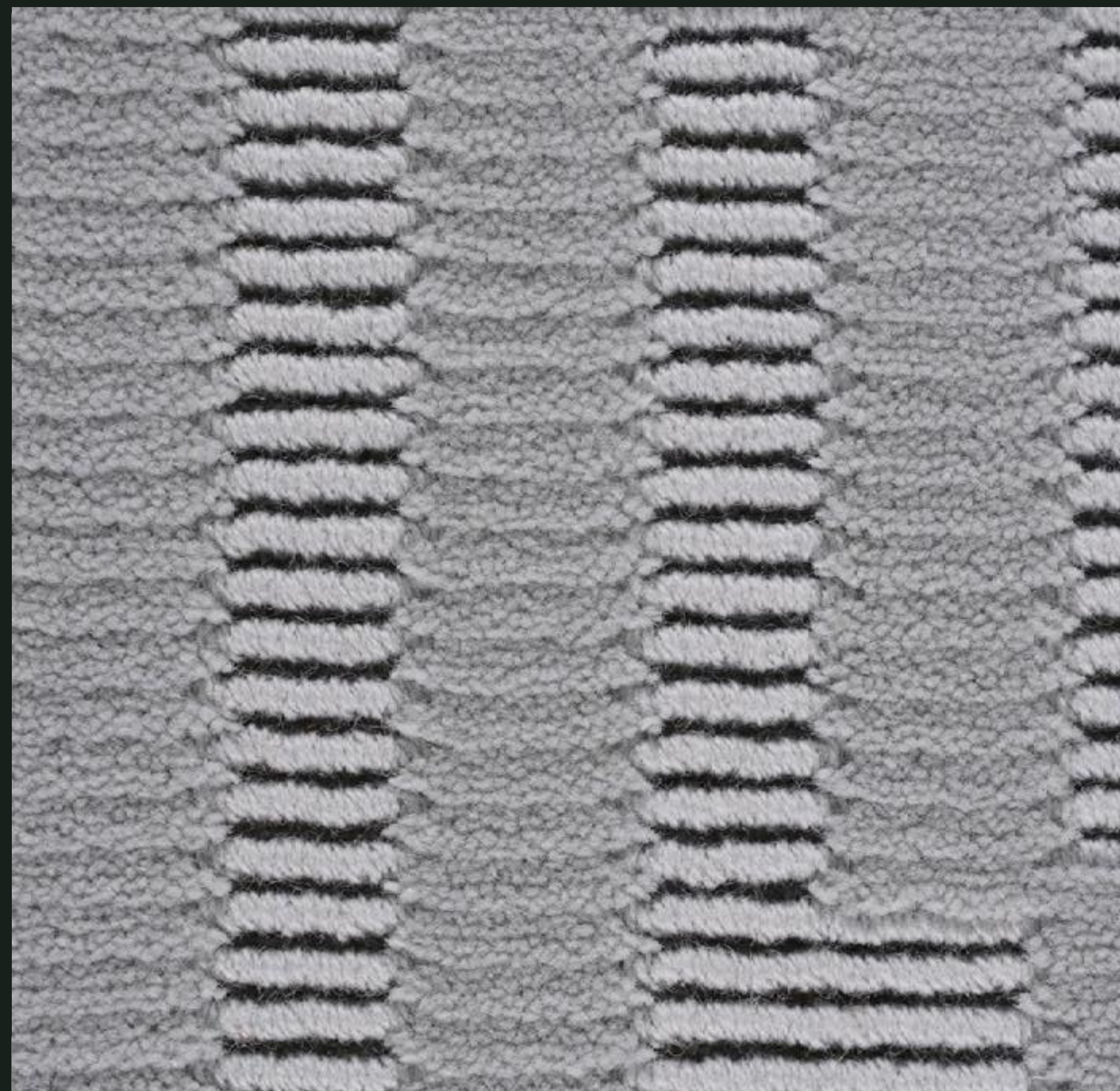


ANTRACITE - 5750



NERO - 6035

VIENNESE







# R

**RADICI PIETRO  
INDUSTRIES & BRANDS S.p.A.**

Via Cav. Pietro Radici, 19  
24026 Cazzano S. Andrea (BG) - Italy  
Tel. +39 035 724242 - Fax +39 035 741549  
info@radici.it - [www.radicicarpet.it](http://www.radicicarpet.it)