



SEASONS

RADICI
NATURE JOURNAL

A JOURNEY TO DISCOVER NATURE THROUGH THE
SEASONS AND TO BE ENCHANTED BY ITS POSSIBILITIES

RADICI



DISCOVER ALL THE COLORS OF THE
FOUR SEASONS ON OUR CARPET STUDIO



The background features a stylized sun with a bright yellow center and rays extending across the top half of the page. Below the sun, a field of yellow flowers is depicted with a soft, blurred effect. The overall color palette is light green and yellow.

CHAPTER 1

ORGANIC ELEMENTS



RESILIENT FLOWERS BLOSSOM

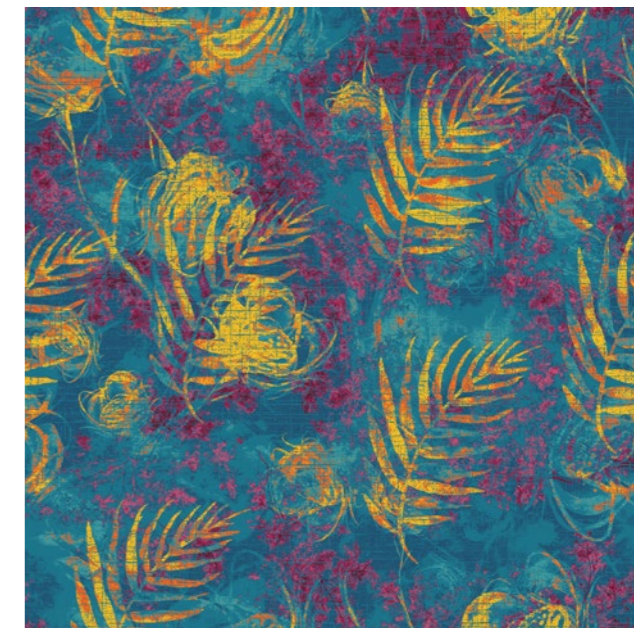
Icy seeds, spring
bloom, dry harvest
and fresh blooming
buds.



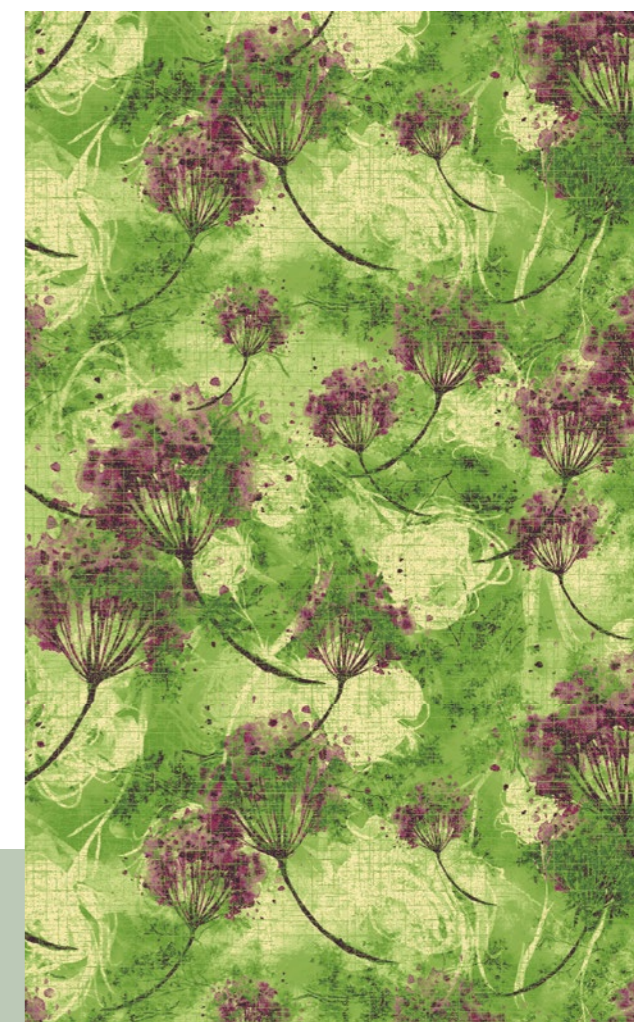
RA10067C1 - 200 X 200 CM
6 COLORS



RA10067C3 - 200 X 200 CM
8 COLORS



RA10067C4 - 200 X 200 CM
5 COLORS

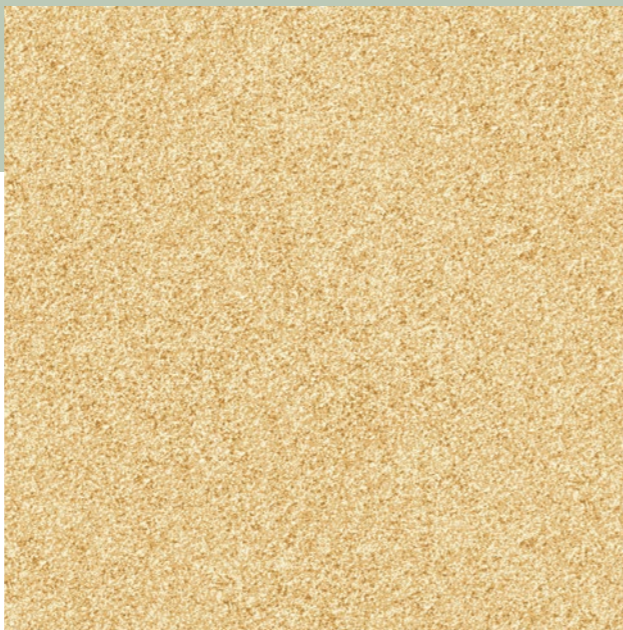
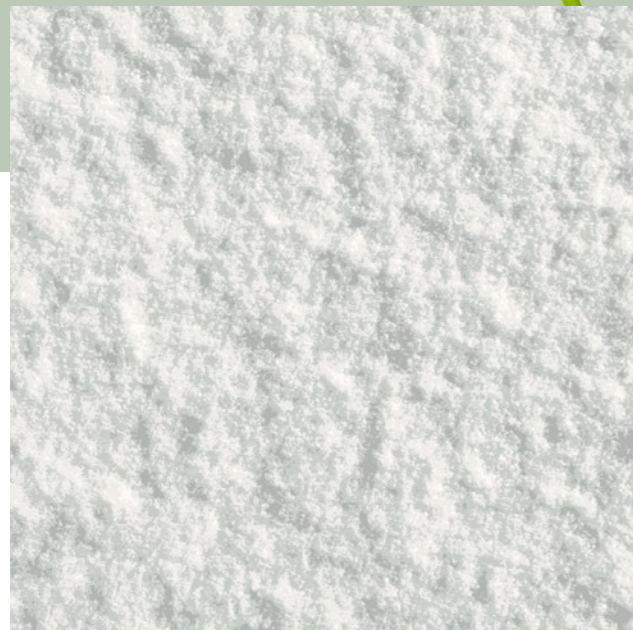
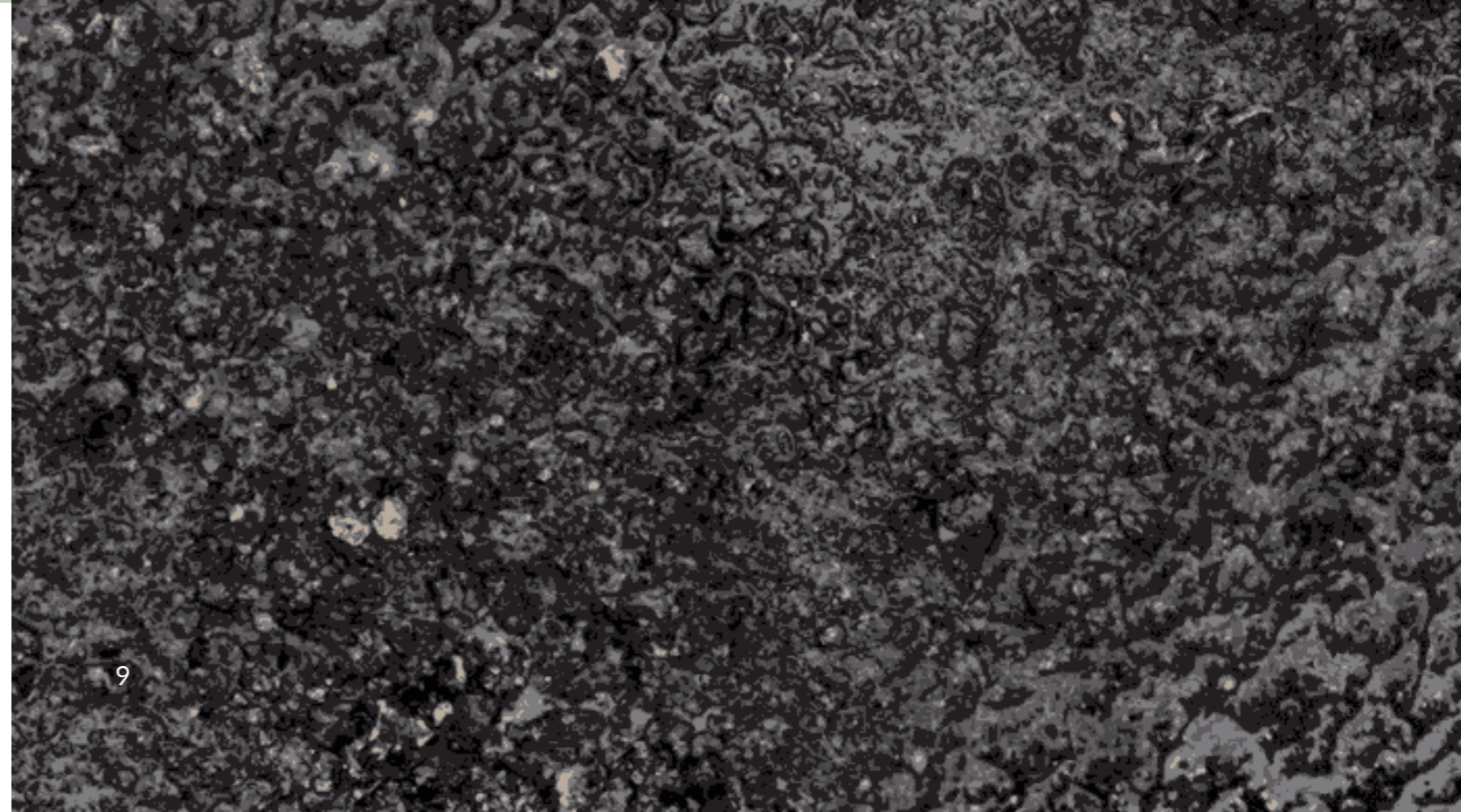


RA10067C2 - 200 X 200 CM
9 COLORS

RA10074C4 - 100 X 100 CM
6 COLORS

RA10074C2 - 100 X 100 CM
6 COLORS

ORGANIC SOIL



RA10074C1 - 100 X 100 CM
5 COLORS

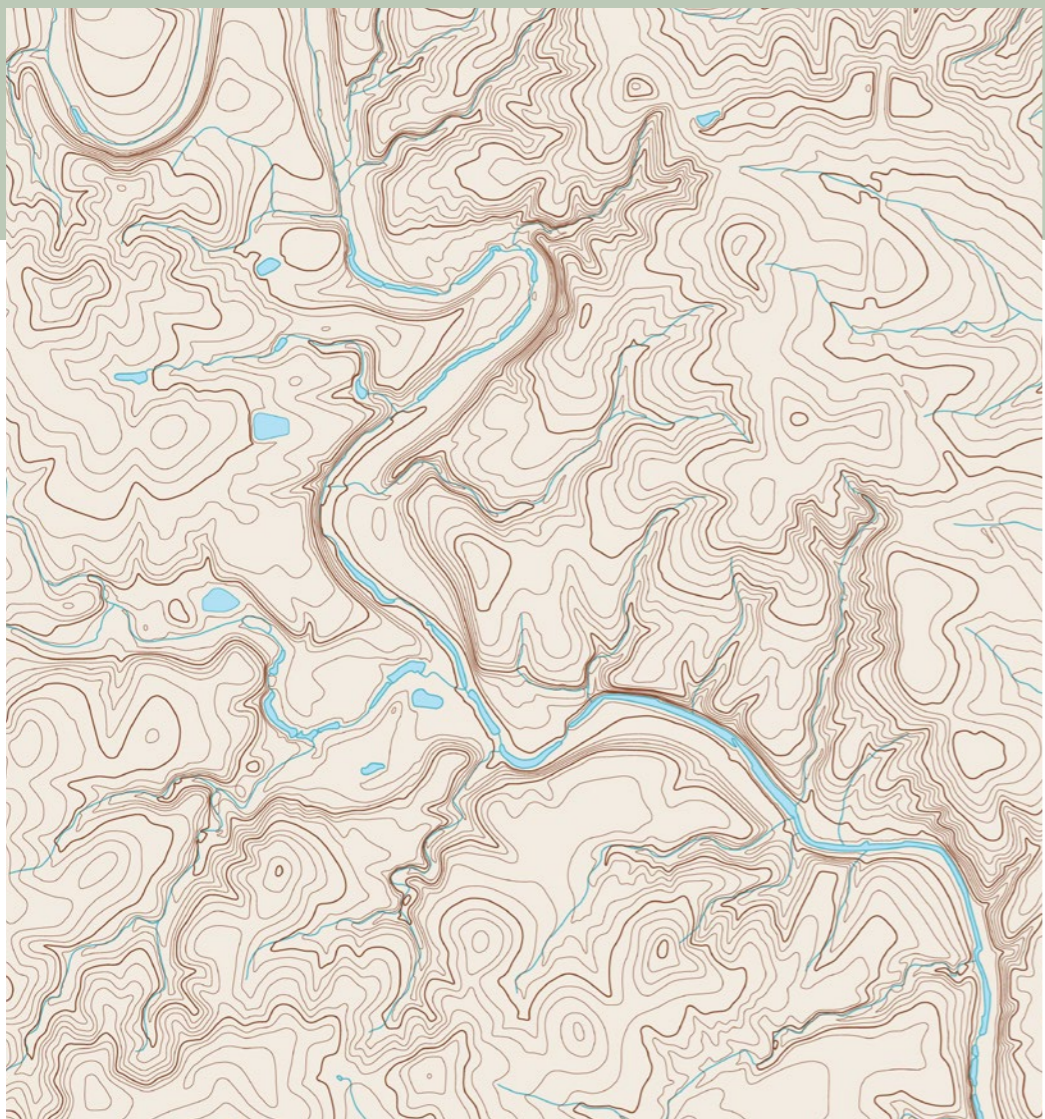
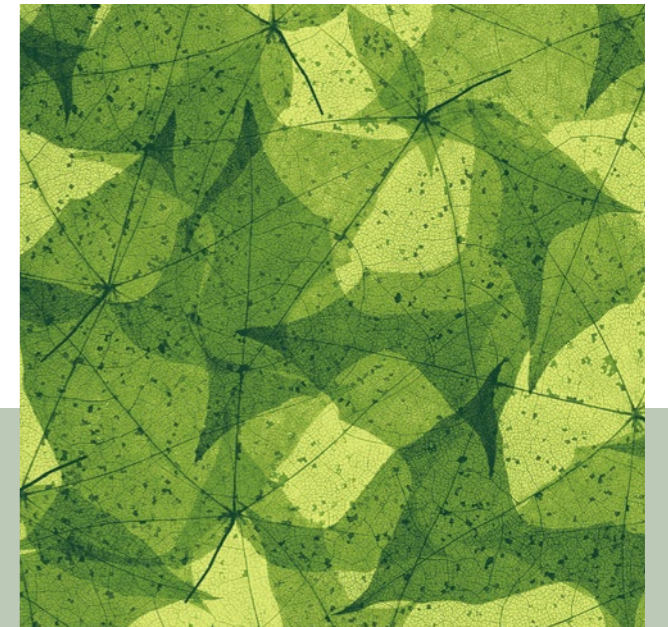
RA10074C3 - 100 X 100 CM
5 COLORS



RA10061C1 - 200 X 240 CM
4 COLORS



RA10061C2 - 200 X 180 CM
5 COLORS

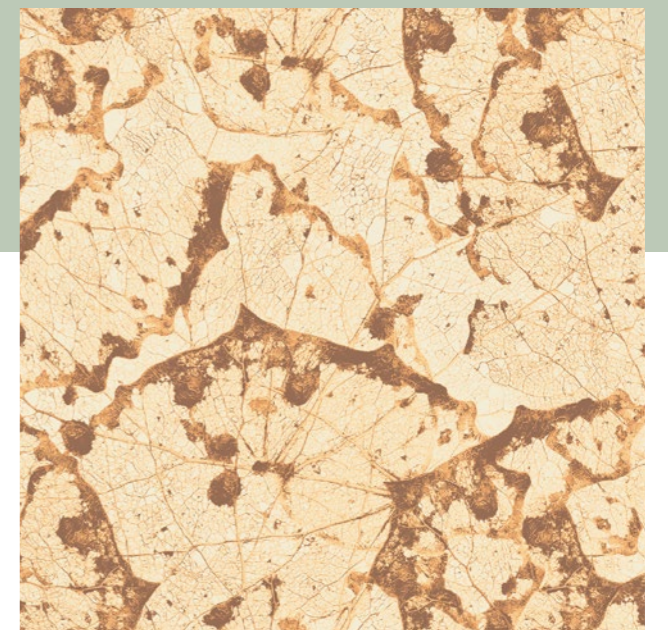


PATHS TRACED BY NATURE

Subtle and elegant lines lead the way to an organic map, tracing stories of seasons through colors and shapes.

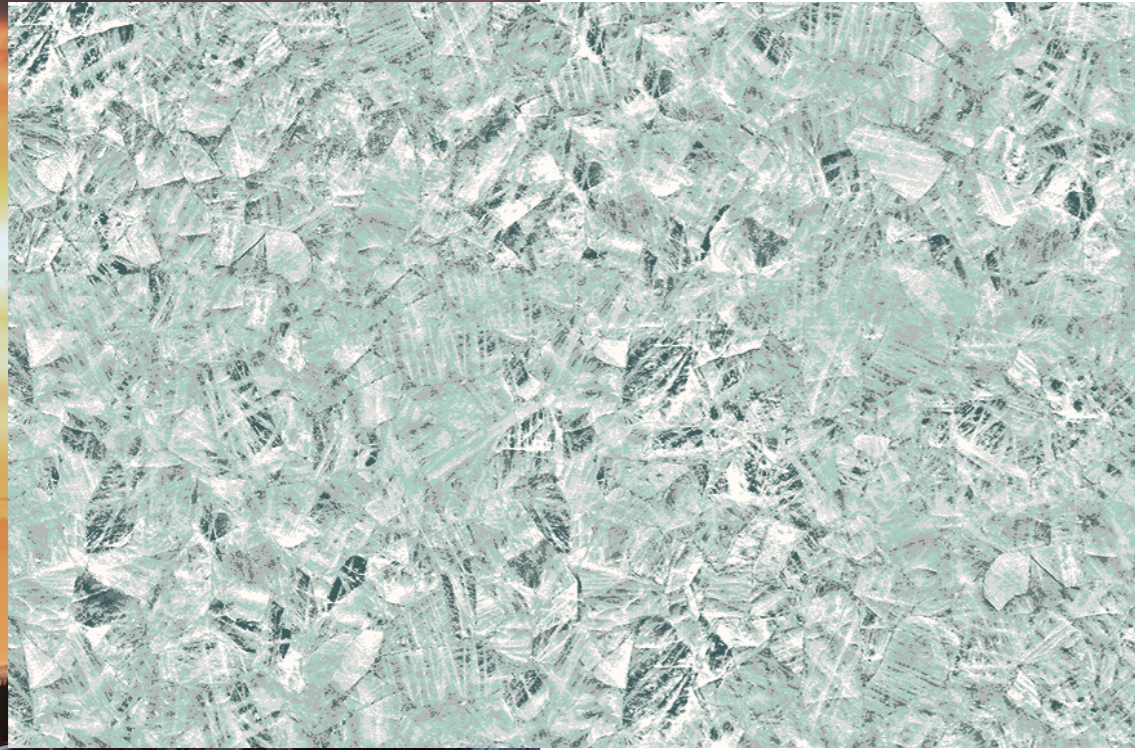


RA10061C3 - 200 X 180 CM
5 COLORS

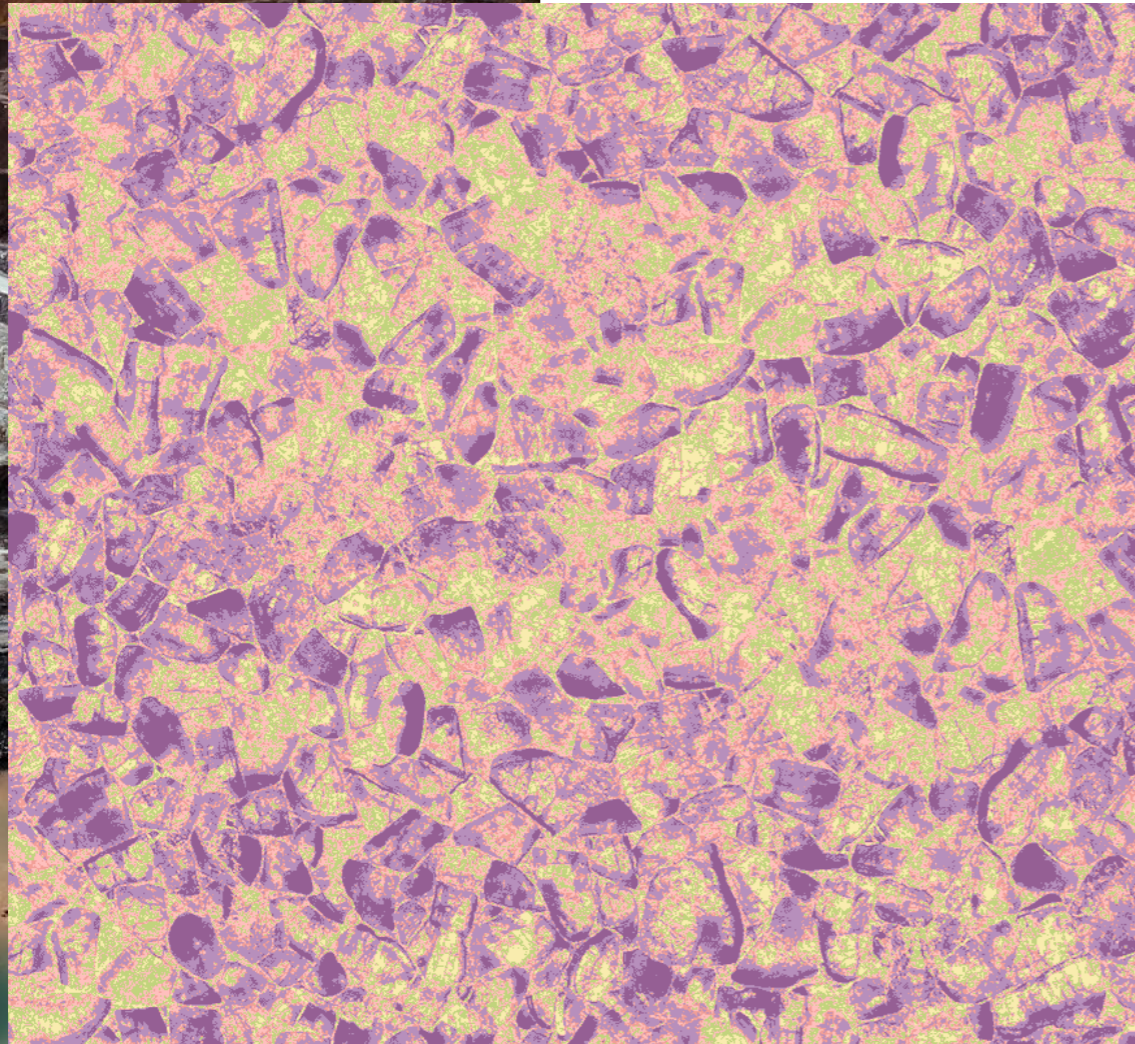
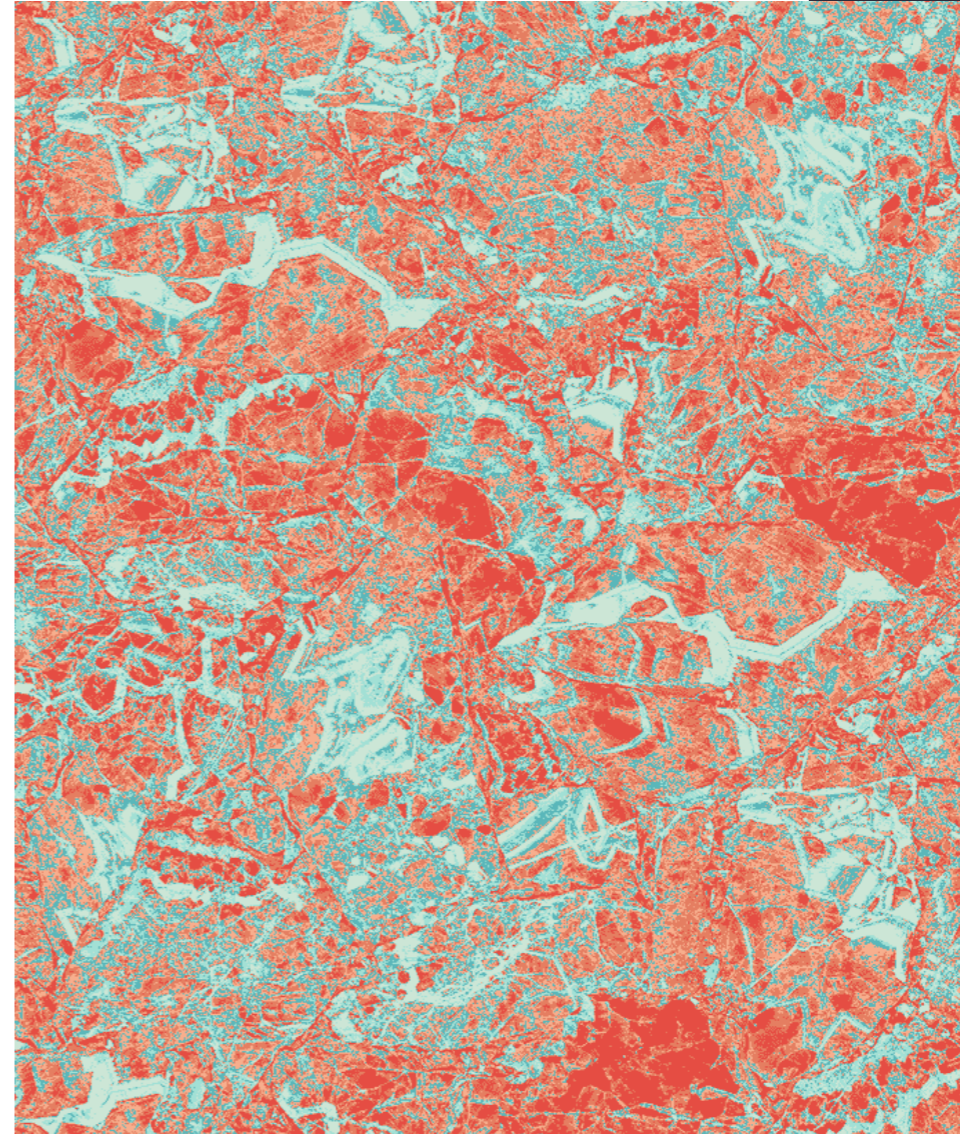


RA10061C4 - 200 X 140 CM
5 COLORS

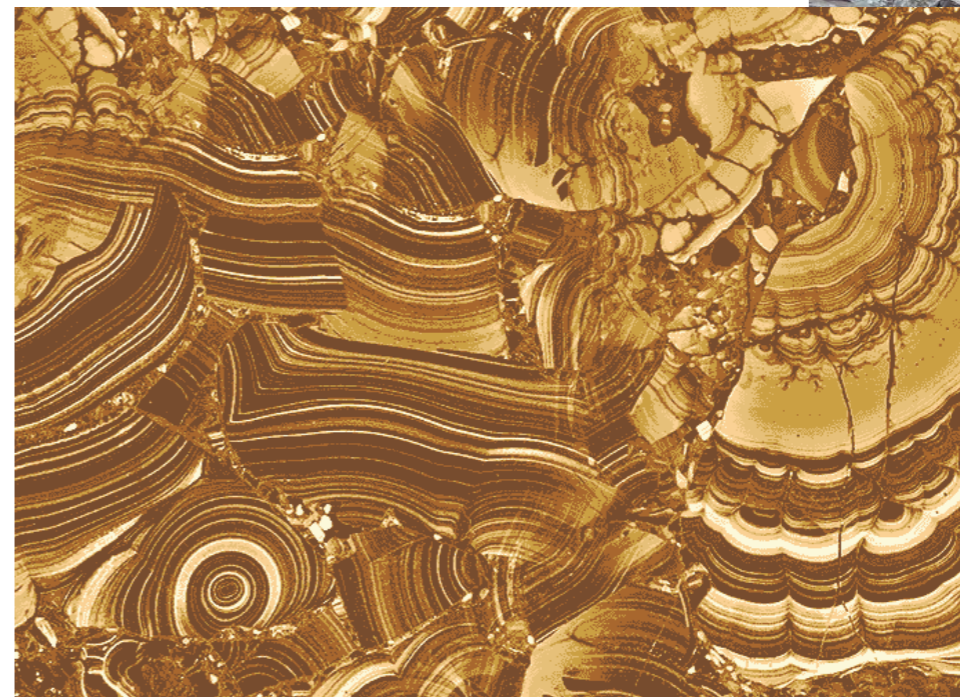
RA10071C1 - 100 X 100 CM
6 COLORS



RA10071C3 - 100 X 100 CM
6 COLORS



RA10071C2 - 100 X 100 CM
6 COLORS



RA10071C4 - 100 X 100 CM
6 COLORS

HIDDEN
TREASURES
OF NATURE

RA10075C3 - 100 X 100 CM
11 COLORS



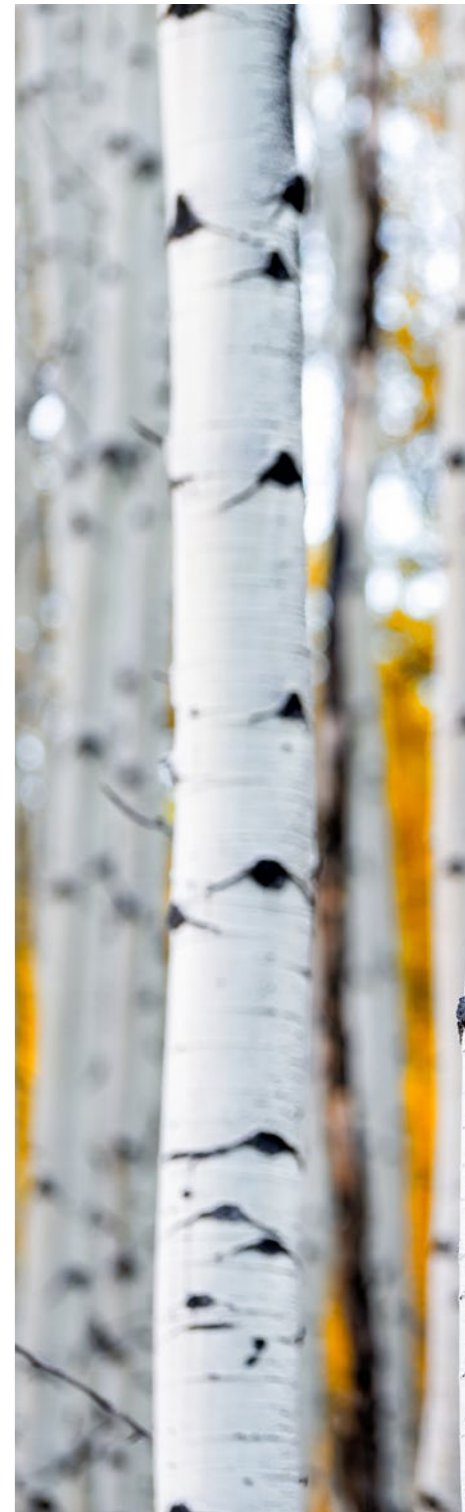
RA10075C1 - 100 X 100 CM
5 COLORS



RA10075C2 - 100 X 100 CM
7 COLORS



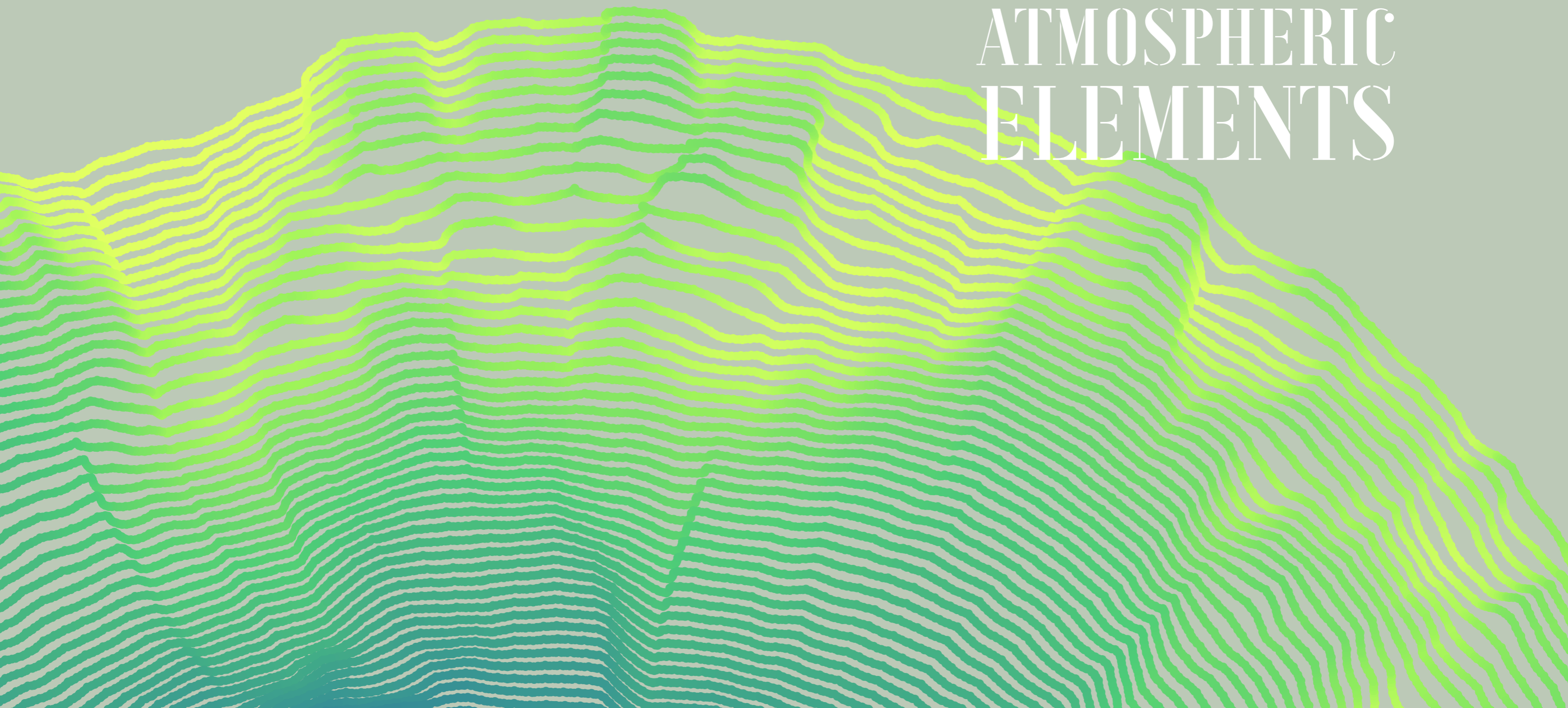
INTO THE WOODS

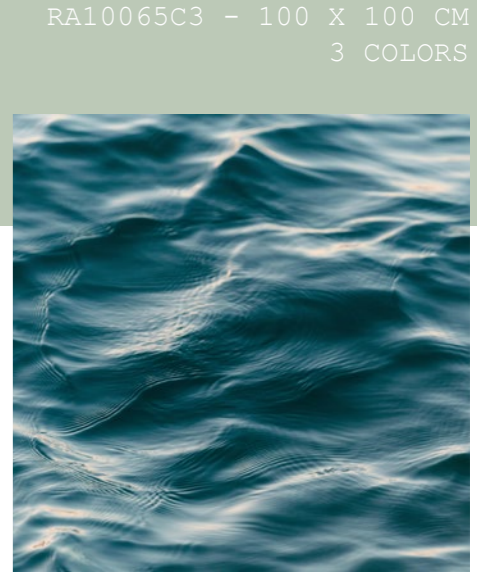
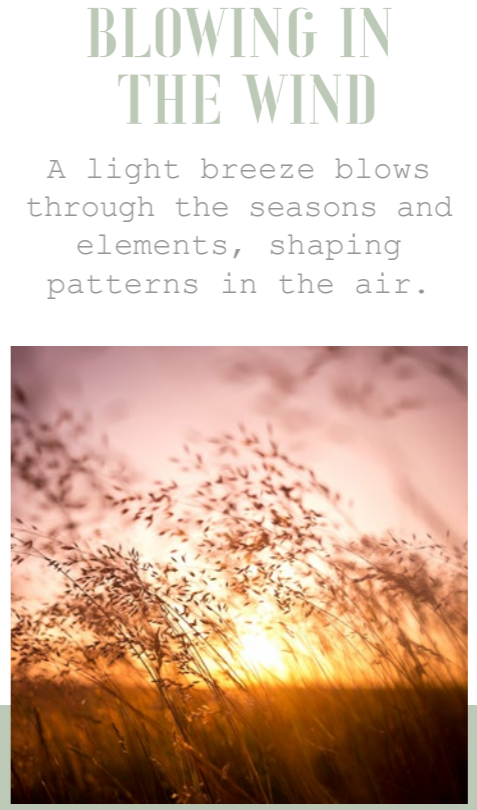
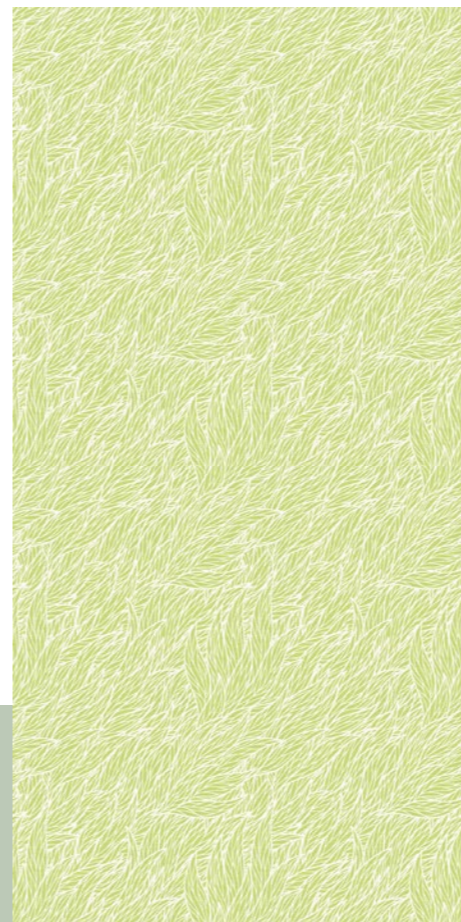
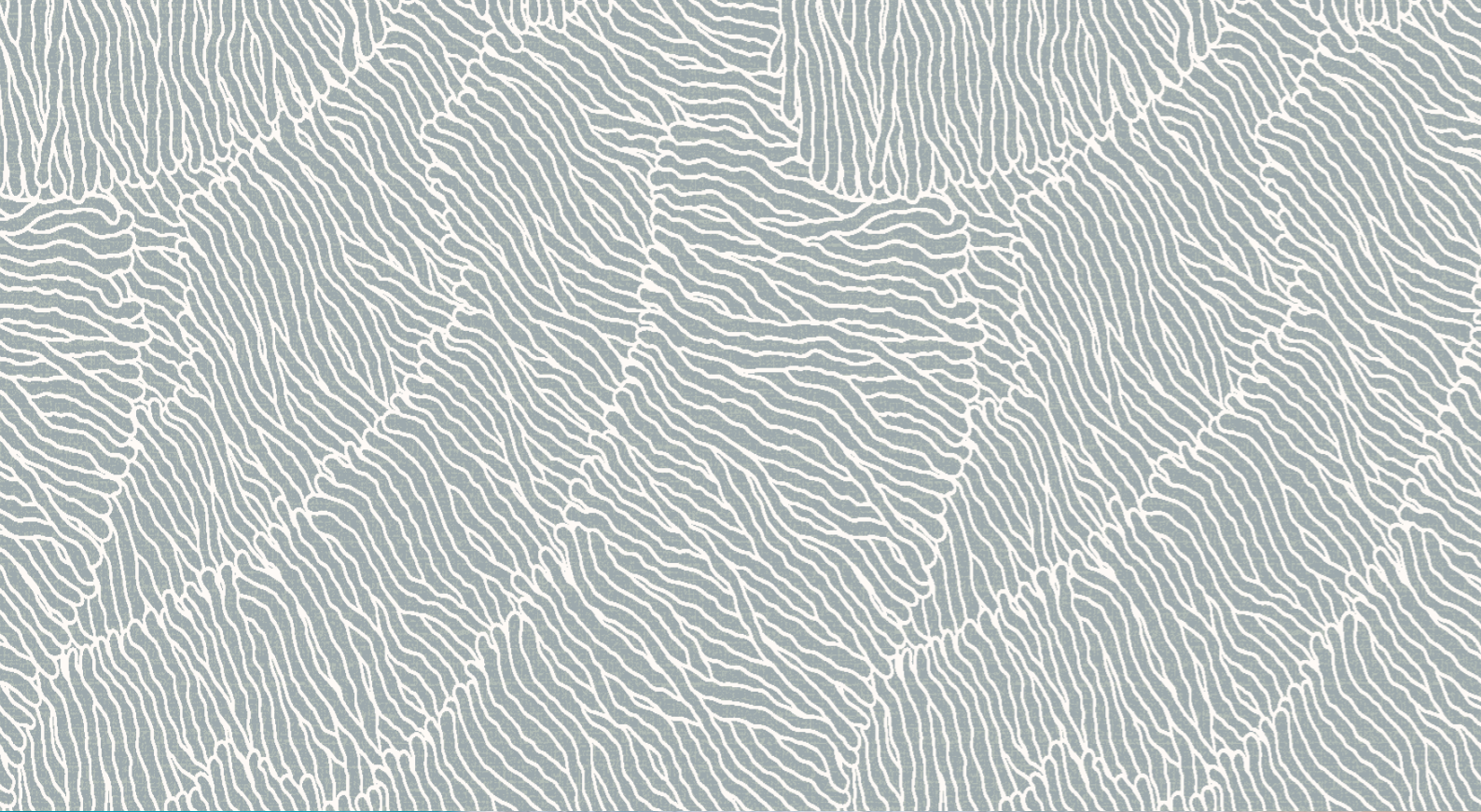


RA10075C4 - 100 X 1CM
7 COLORS

CHAPTER 2

ATMOSPHERIC ELEMENTS





BLOWING IN THE WIND

A light breeze blows through the seasons and elements, shaping patterns in the air.

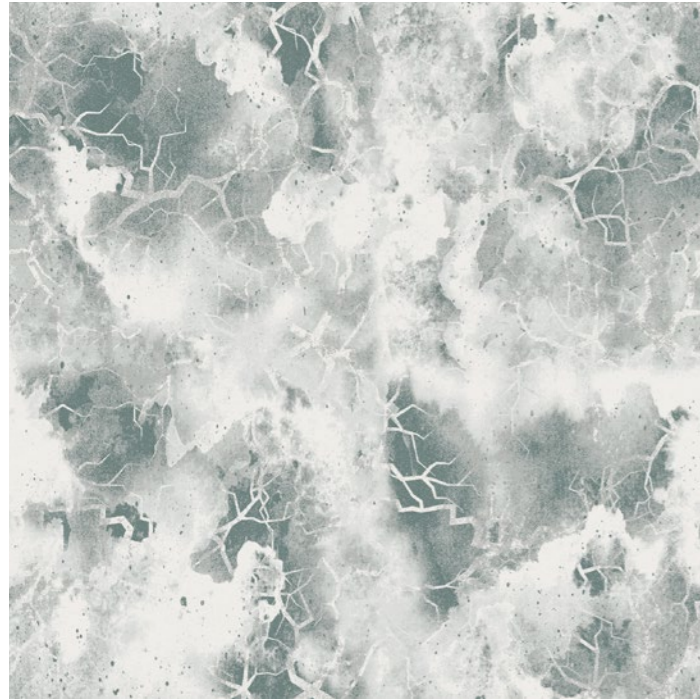
RA10065C1 - 200 X 200 CM
3 COLORS

RA10065C2 - 200 X 200 CM
3 COLORS

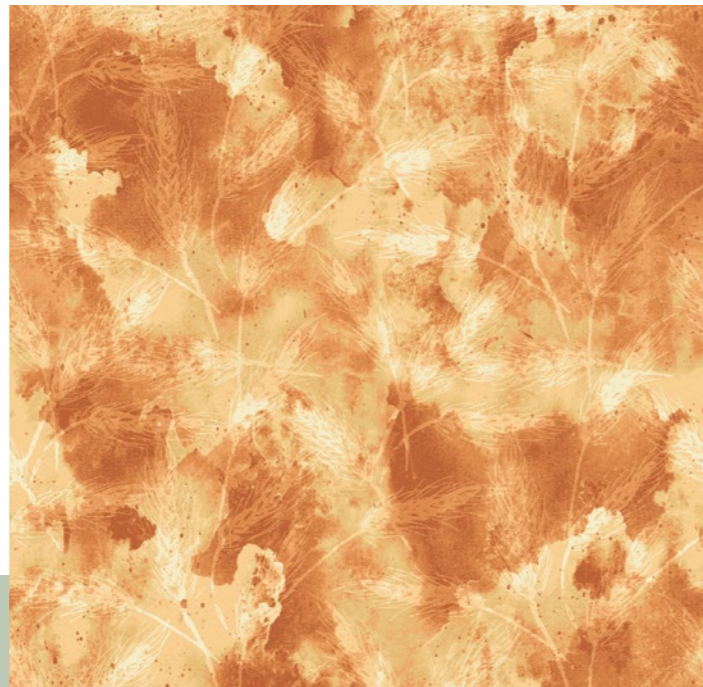
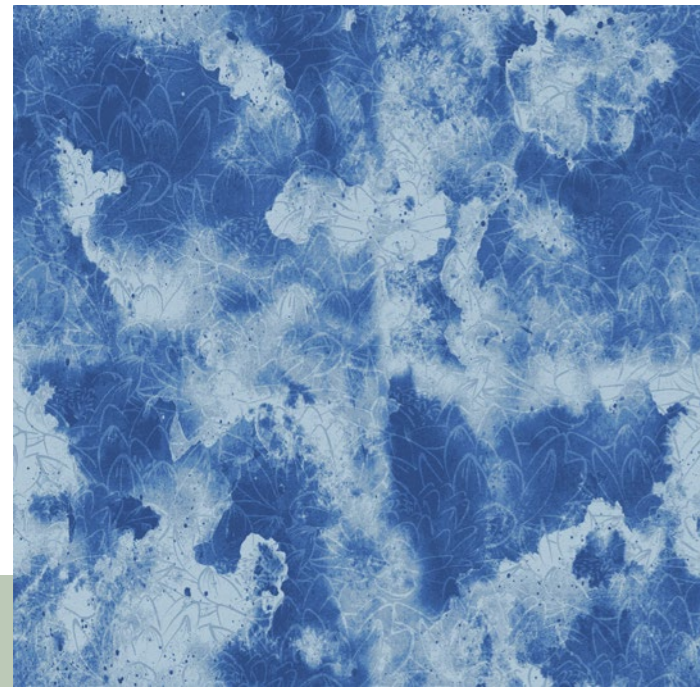
RA10065C4 - 100 X 100 CM
3 COLORS

RA10065C3 - 100 X 100 CM
3 COLORS

RA10062C1 - 200 X 200 CM
5 COLORS

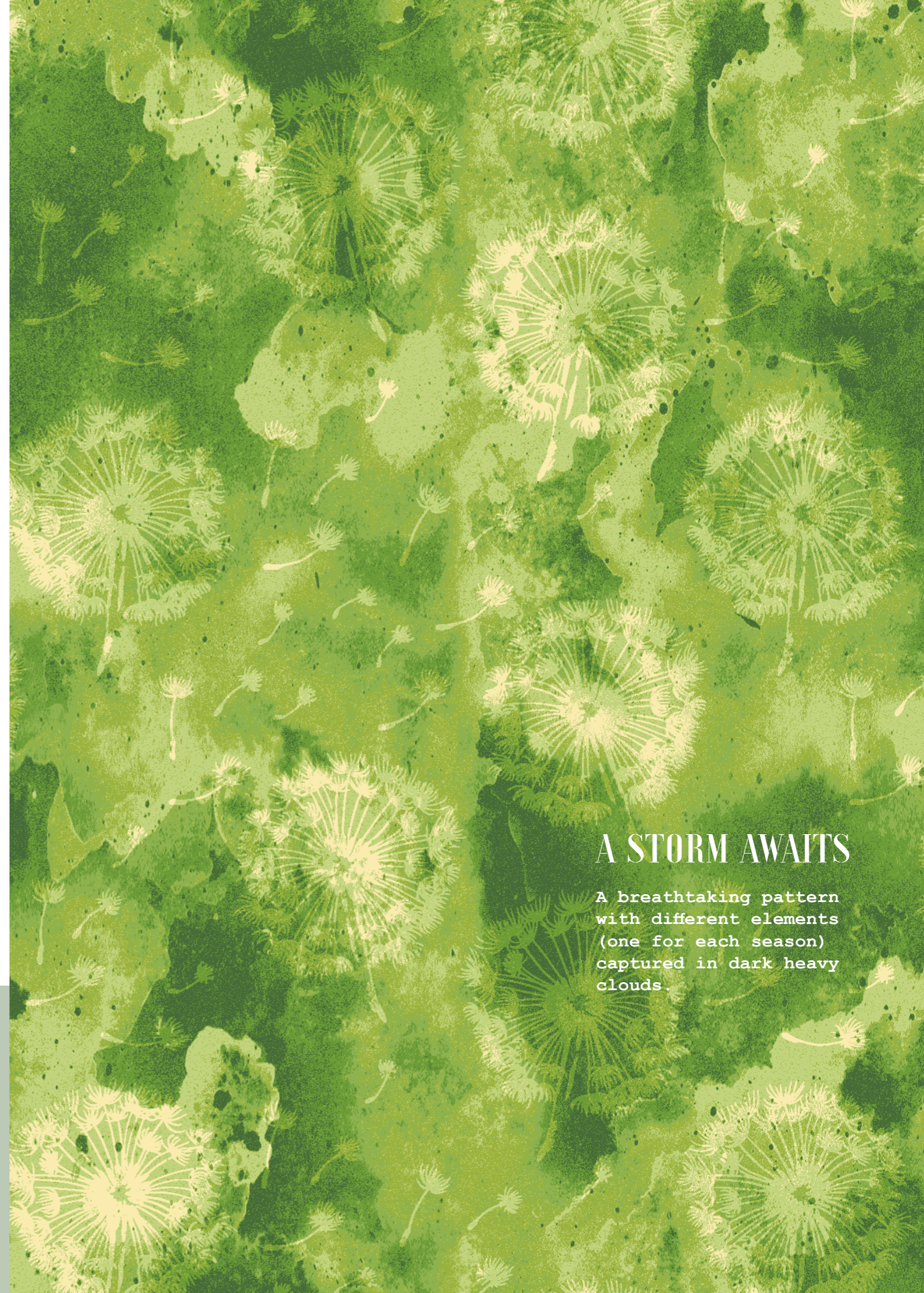


RA10062C2 - 200 X 200 CM
6 COLORS



RA10062C3 - 200 X 200 CM
5 COLORS

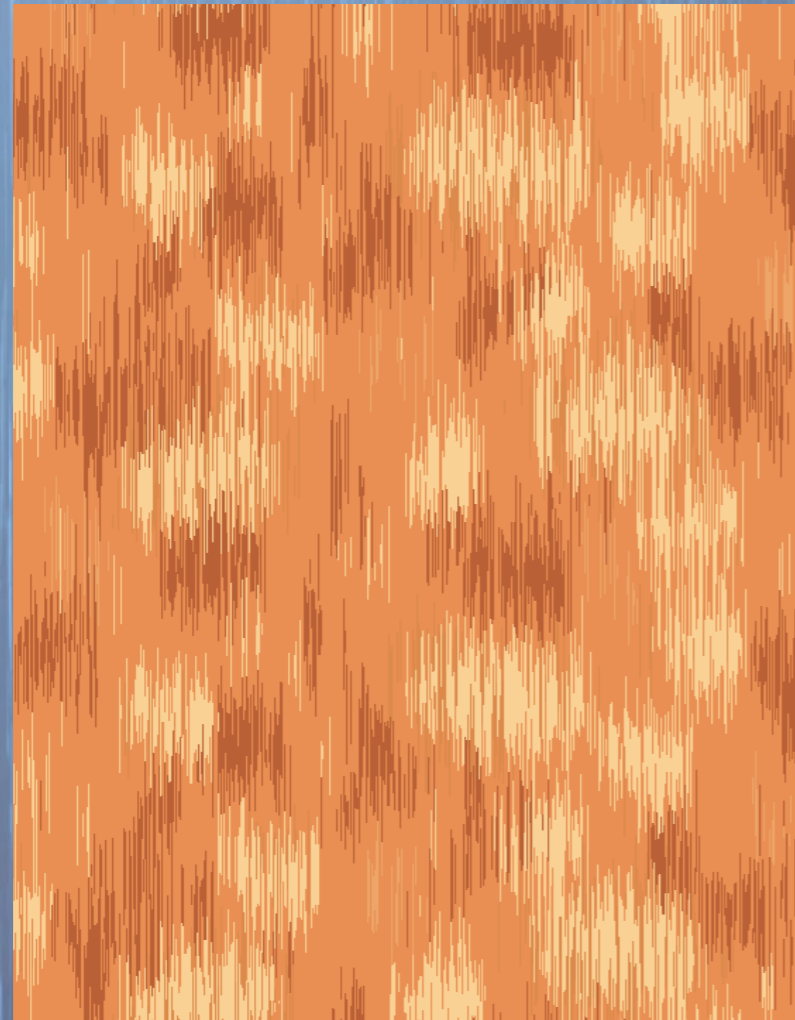
RA10062C4 - 200 X 200 CM
6 COLORS



A STORM AWAITS

A breathtaking pattern with different elements (one for each season) captured in dark heavy clouds.

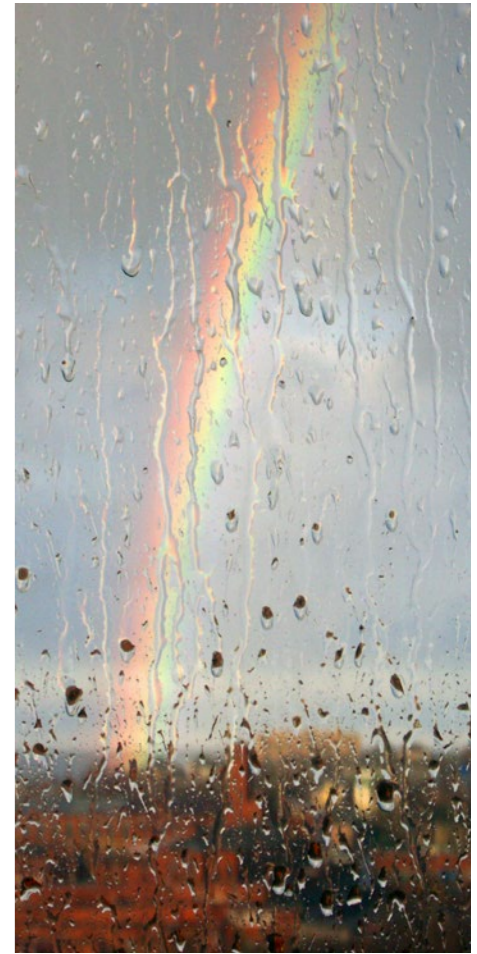
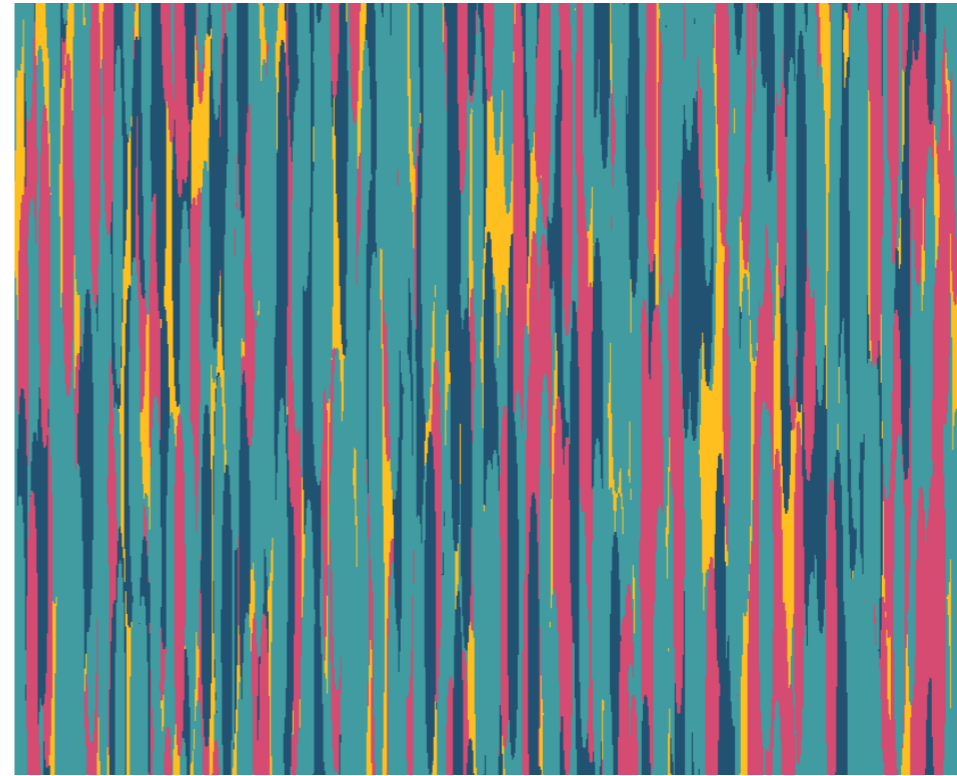
RA10070C4 - 100 X 100 CM
5 COLORS



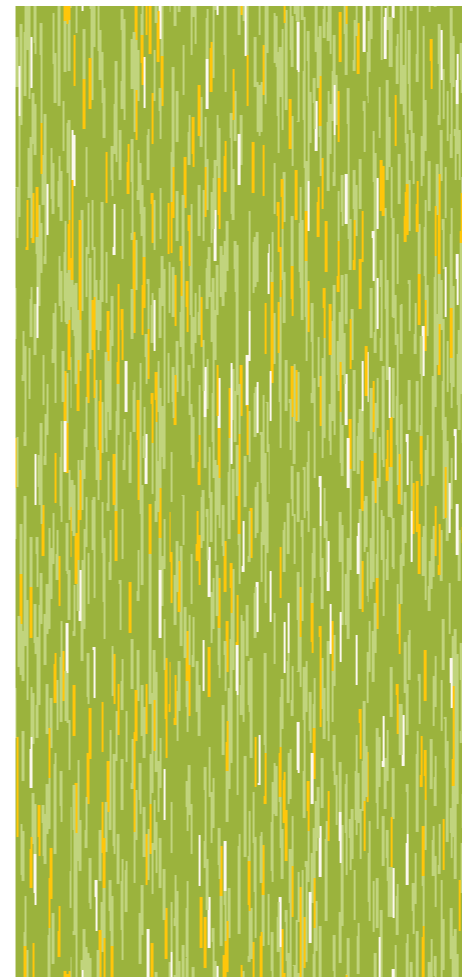
RAIN WALLS

Heavy and colorful
lines, painted by the
seasons, fall from the
sky.

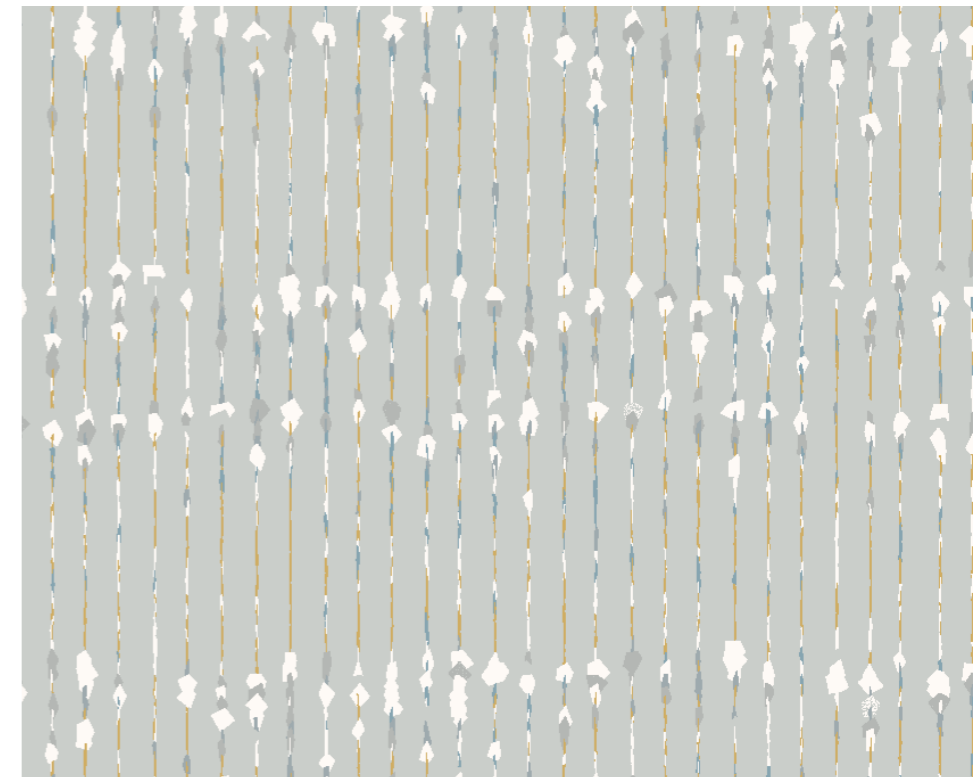
RA10070C3 - 100 X 100 CM
4 COLORS

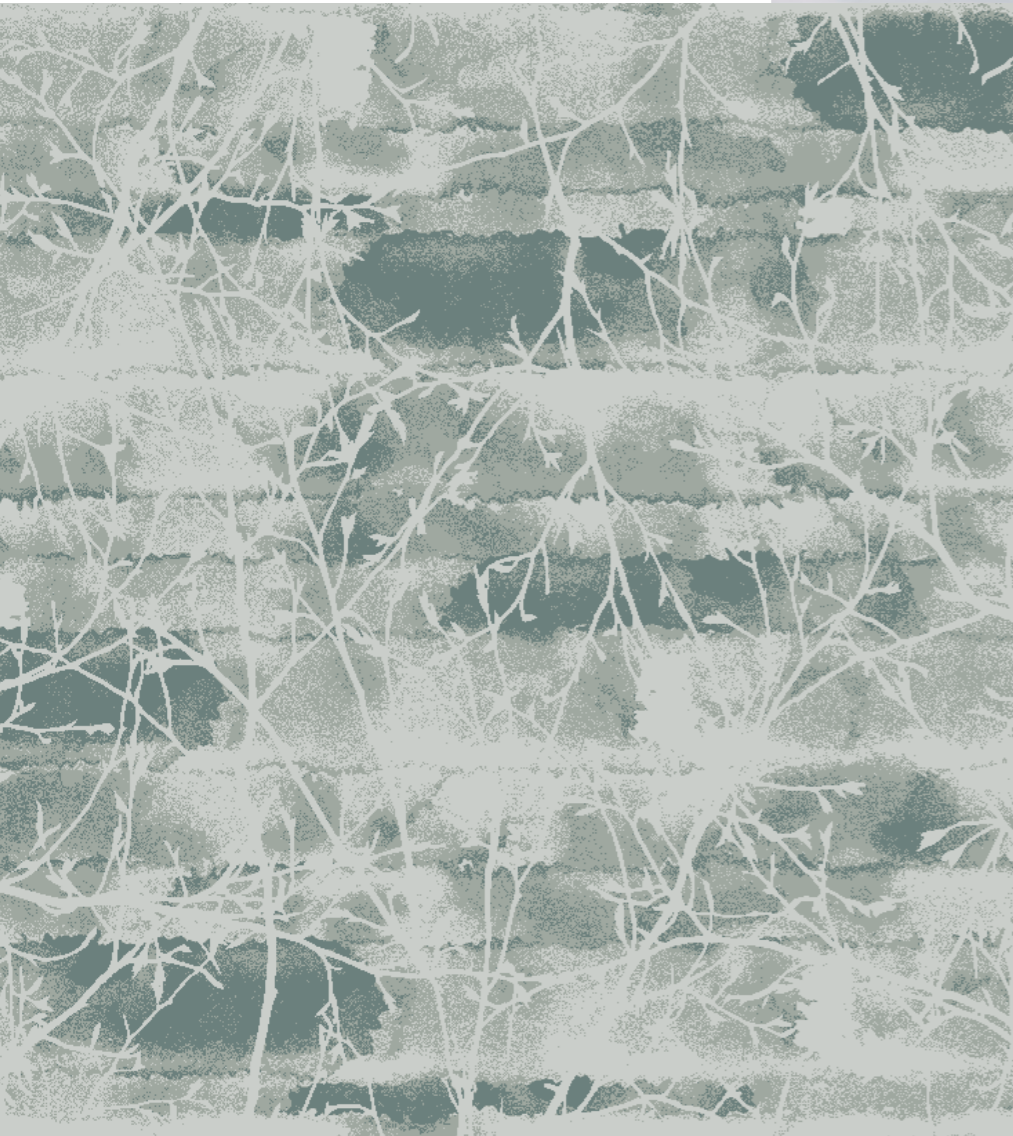


RA10070C1 - 100 X 100 CM
6 COLORS



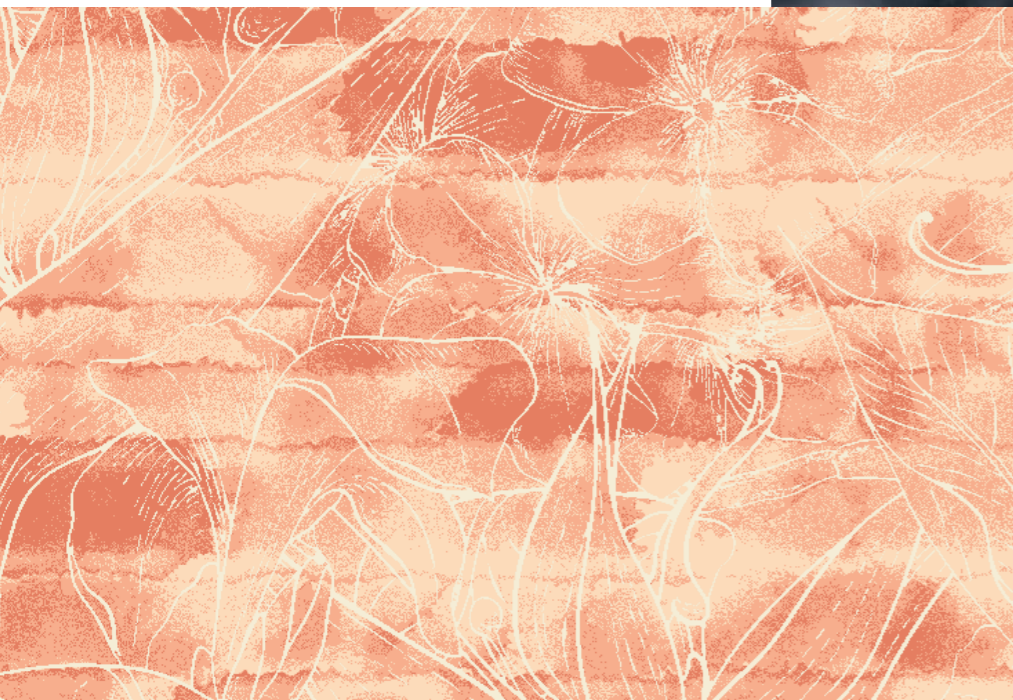
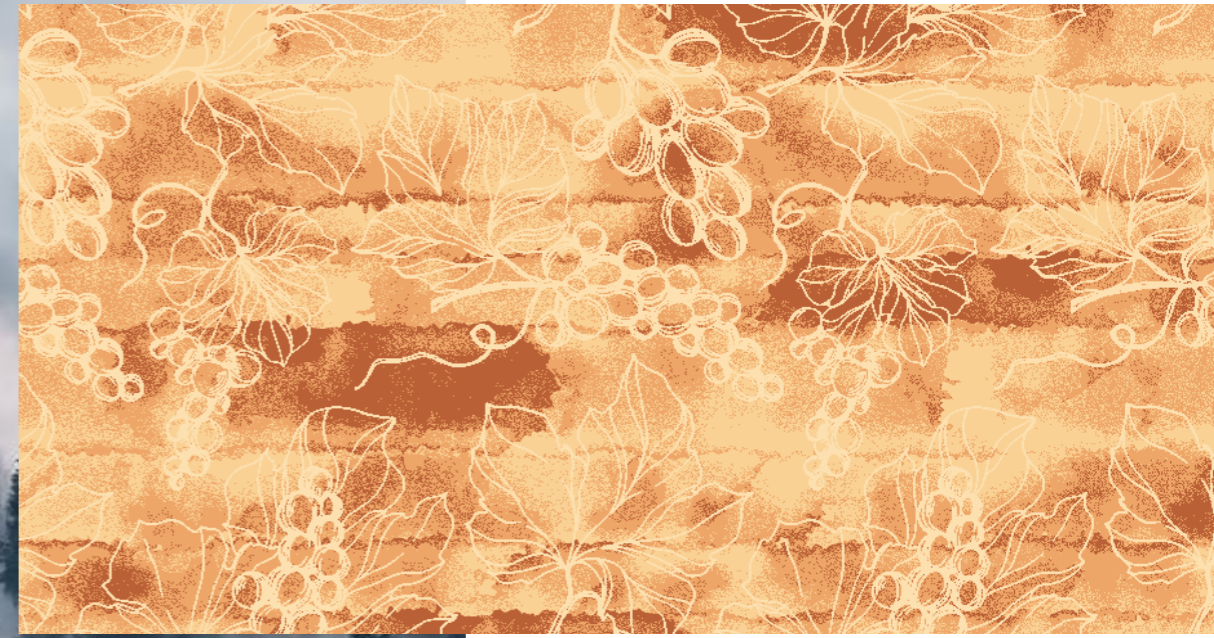
RA10070C2 - 100 X 100 CM
4 COLORS





RA10063C1 - 100 X 100 CM
3 COLORS

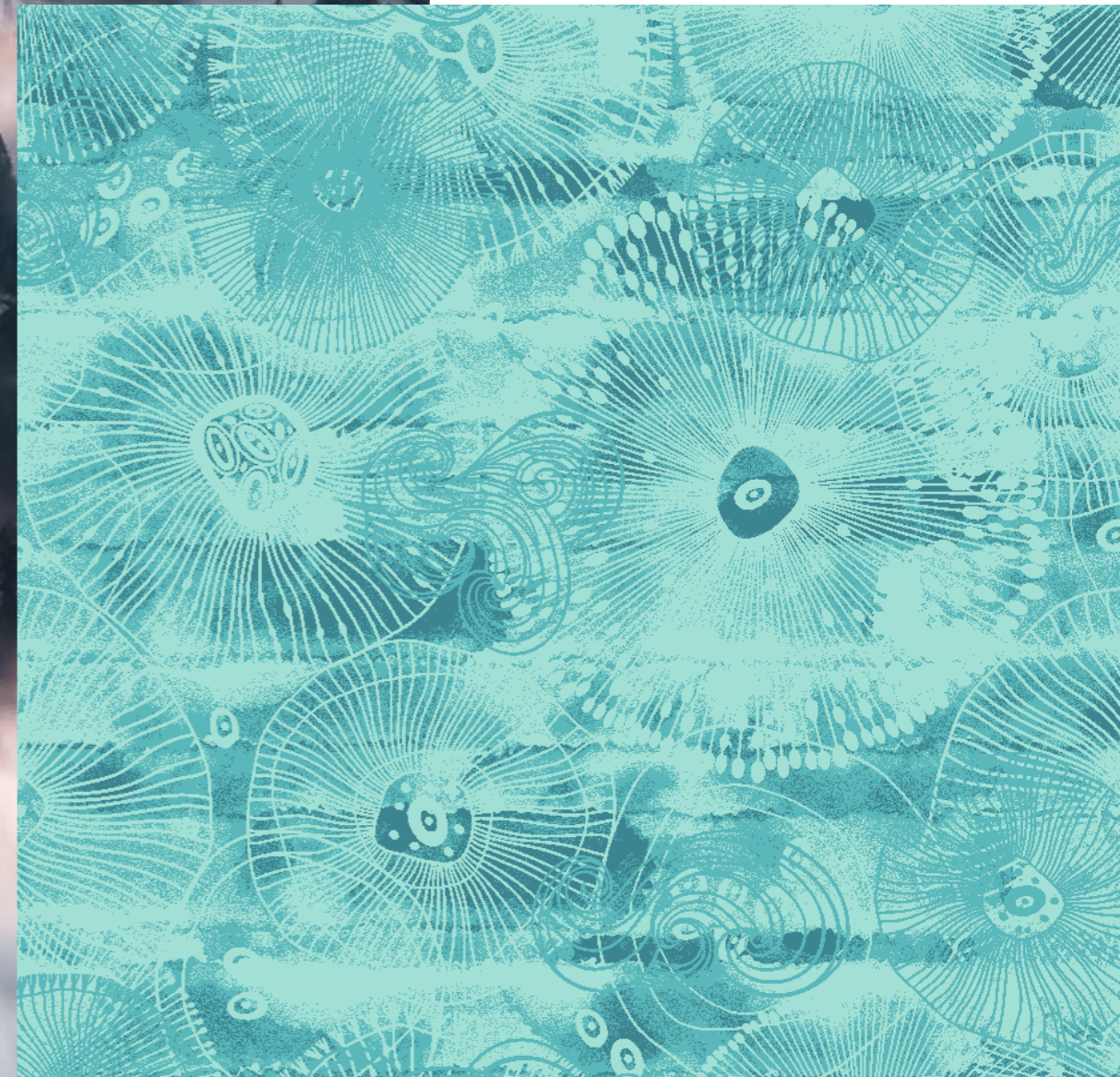
RA10063C4 - 100 X 100 CM
4 COLORS



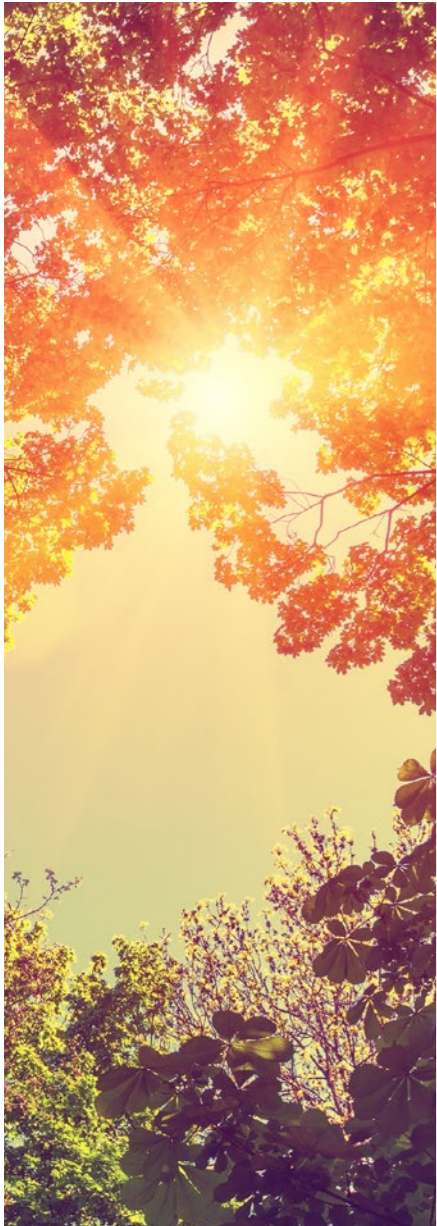
RA10063C2 - 100 X 100 CM
4 COLORS



PEEKING THROUGH THE FOG



RA10063C3 - 100 X 100 CM
3 COLORS

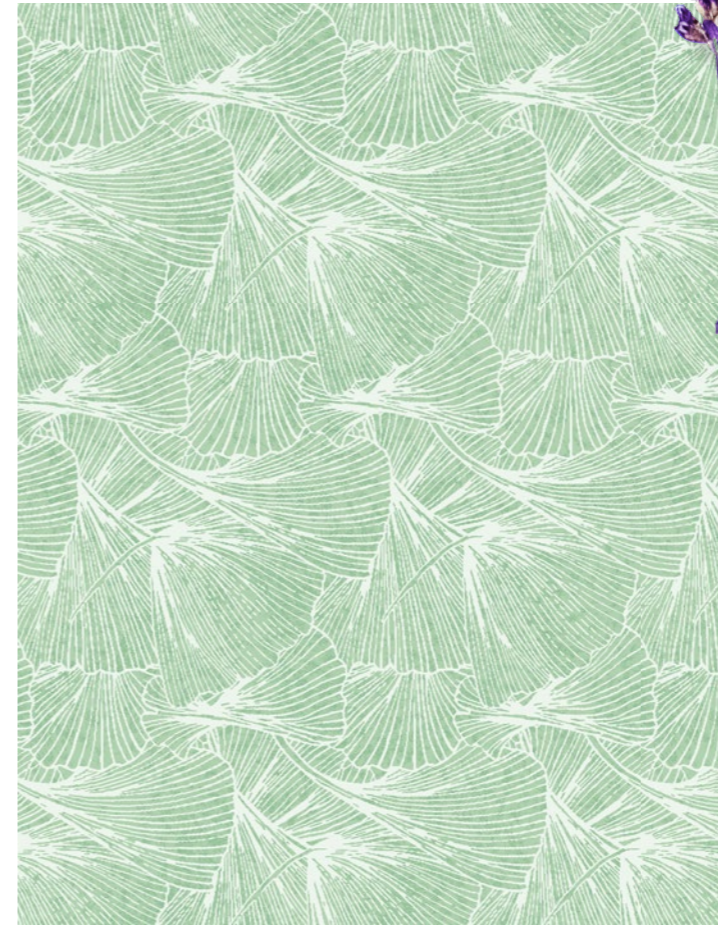


SUN DRAWINGS



RA10073C1 - 200 X 200 CM
3 COLORS

RA10073C2 - 200 X 200 CM
3 COLORS

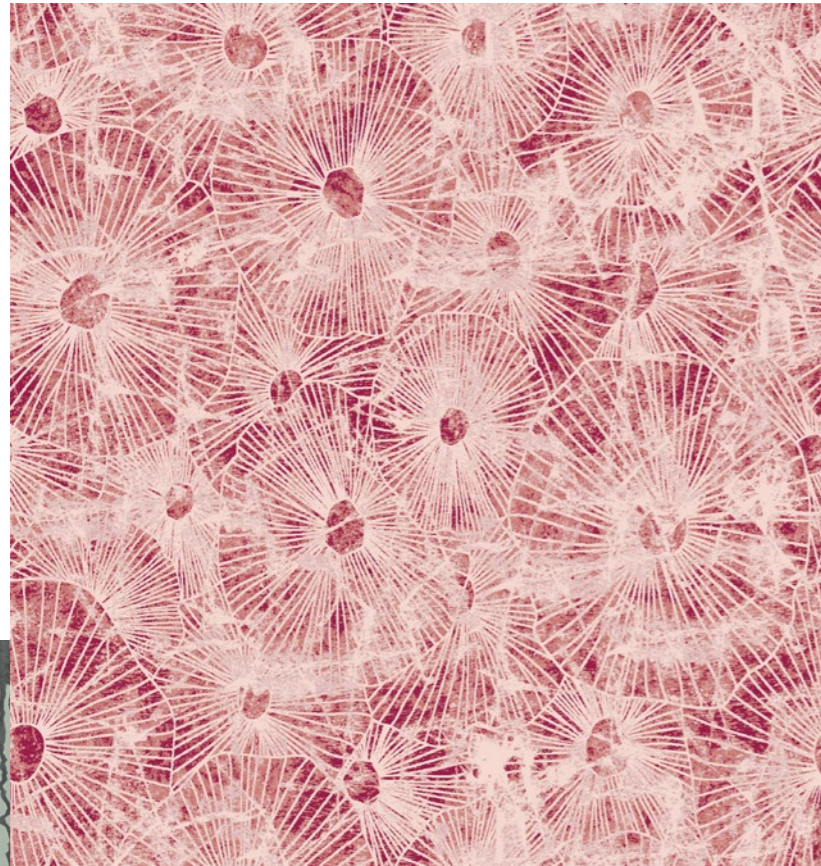


RA10073C3 - 200 X 200 CM
4 COLORS



RA10073C4 - 200 X 200 CM
3 COLORS

RA10064C2 - 200 X 200 CM
4 COLORS



RA10064C4 - 200 X 180 CM
5 COLORS

THE EARTH TREMBLES

Right from the core,
vibrations draw lines
and create fractures
in the ground.

RA10064C1
200 X 200 CM
4 COLORS



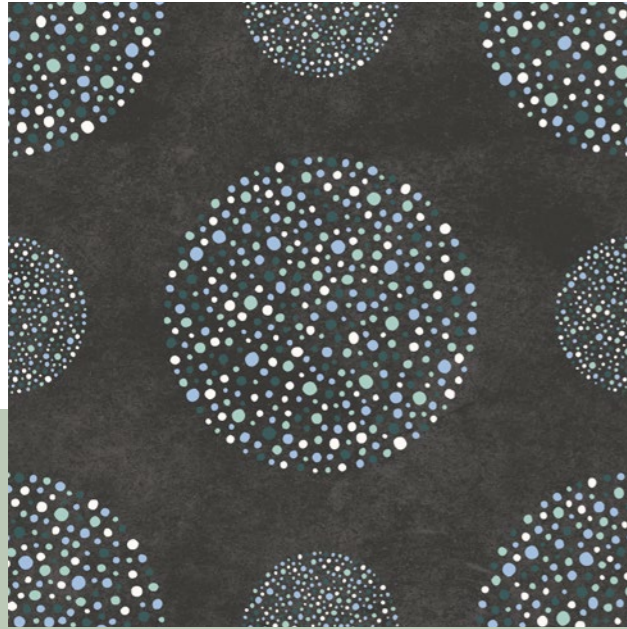
RA10064C3
200 X 200 CM
4 COLORS



CHAPTER 3

ARTIFICIAL ELEMENTS

RA10068C1 - 200 X 200 CM
7 COLORS



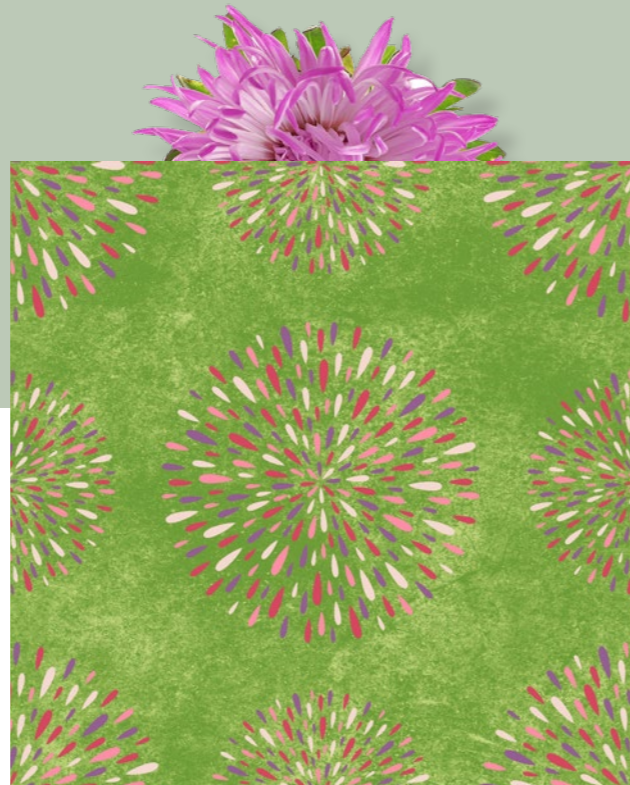
ELEMENTS FIREWORKS



RA10068C4 - 200 X 200 CM
7 COLORS



RA10068C3 - 200 X 200 CM
7 COLORS



RA10068C2 - 200 X 200 CM
7 COLORS



WHEN ART IMITATES NATURE

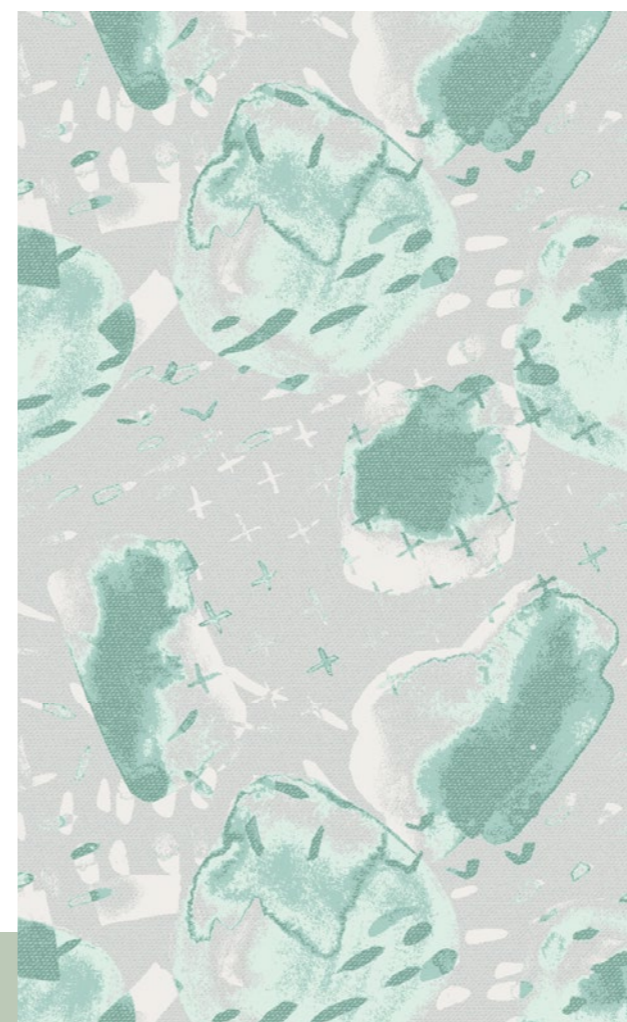
In an attempt to understand what surrounds us, we paint lines and ethereal forms portraying the seasons through canvas and brushes, leaving to art the task of representing nature in all its forms to mankind.



RA10072C4 - 100 X 100 CM
6 COLORS



RA10072C3 - 100 X 100 CM
6 COLORS

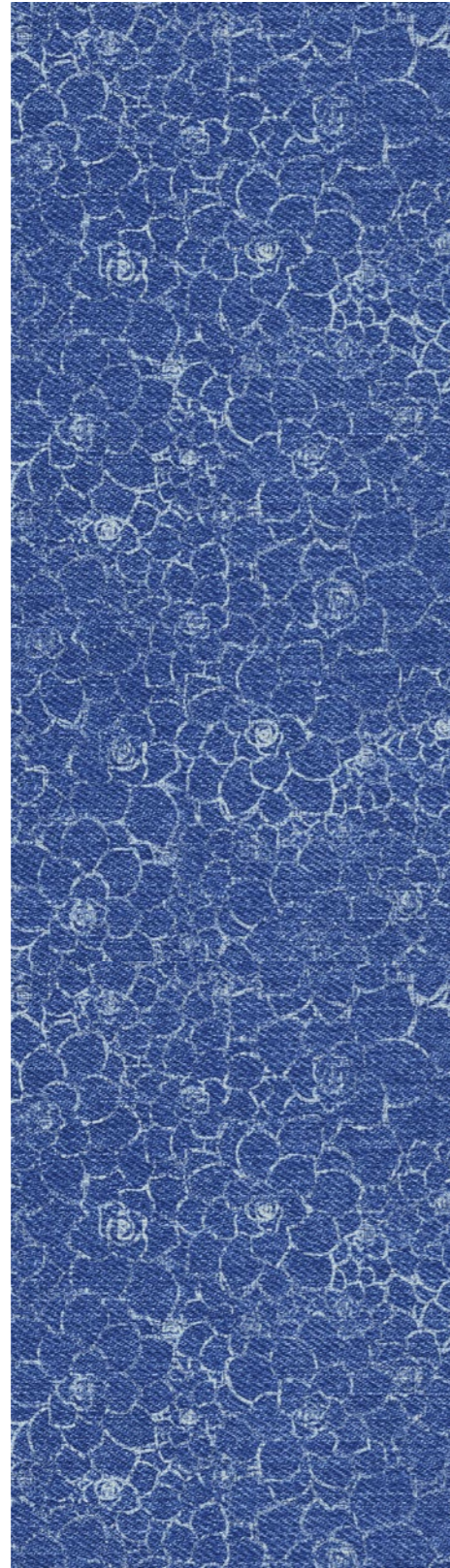
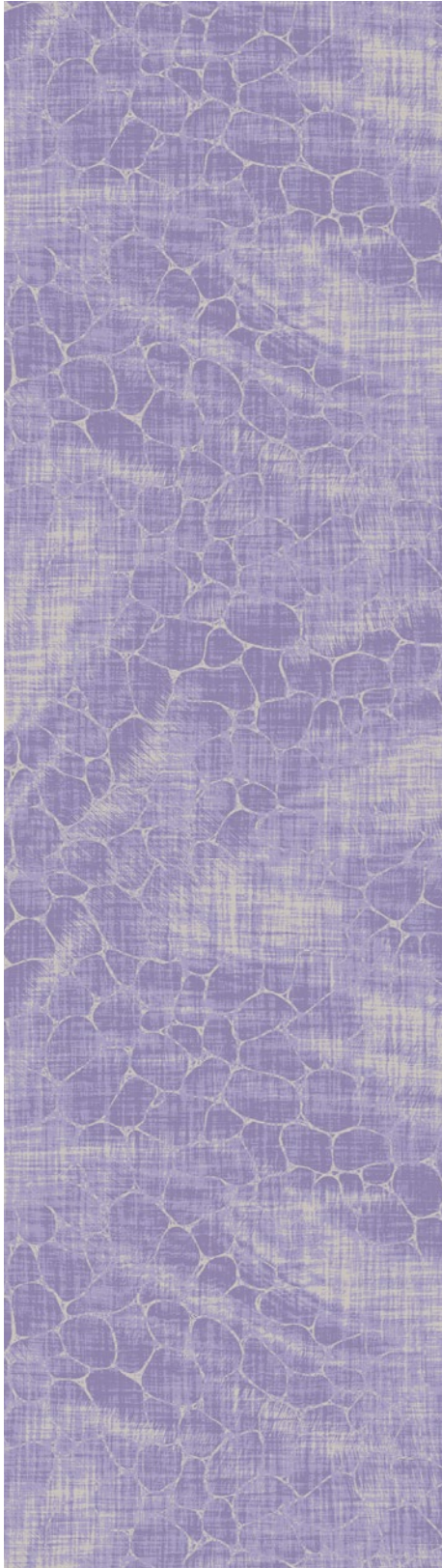


RA10072C1 - 100 X 100 CM
6 COLORS



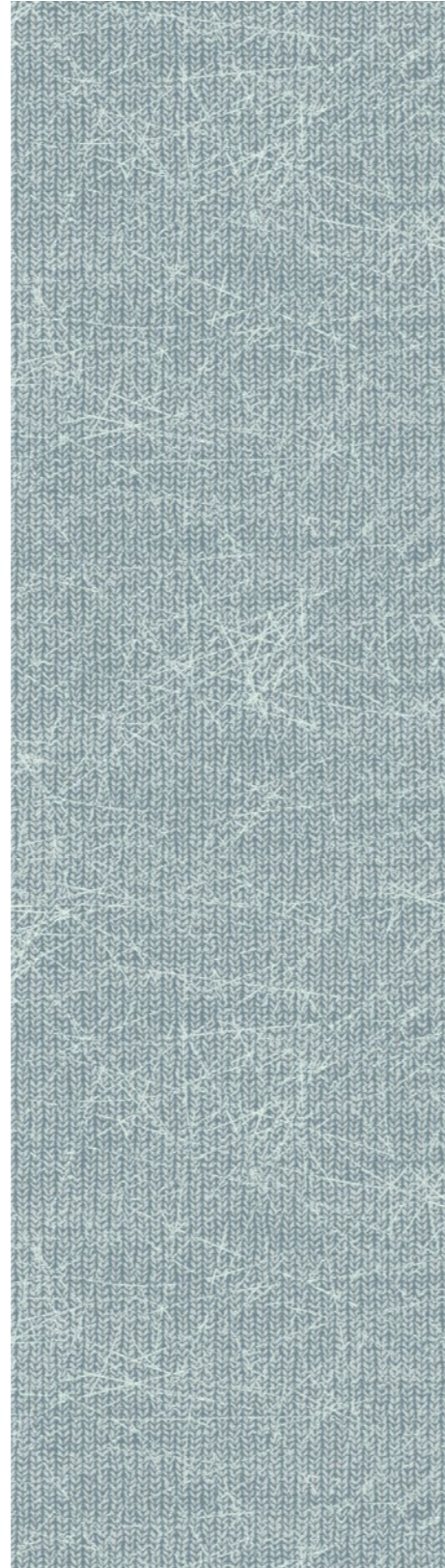
RA10072C2 - 100 X 100 CM
6 COLORS

RA10066C3 - 200 X 200 CM
3 COLORS



RA10066C2 - 200 X 200 CM
5 COLORS

RA10066C1 - 200 X 200 CM
4 COLORS



RA10066C4 - 200 X 200 CM
4 COLORS



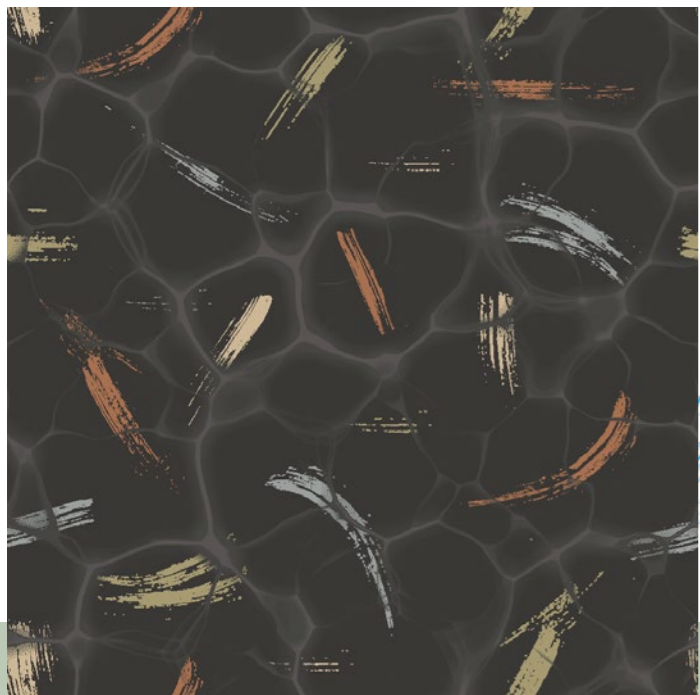
A FABRIC FOR EVERY SEASON

Wool, linen, denim and
silk created to be
comfortable in any
weather.

RA10069C1 - 100 X 100 CM
6 COLORS



RA10069C2 - 100 X 100 CM
6 COLORS



RA10069C4 - 100 X 100 CM
7 COLORS



RA10069C3 - 100 X 100 CM
6 COLORS

HUMAN MARKS

As human, we have lived on our Earth and transformed the face of nature, leaving an indelible mark of our passage.

RADICI

www.radicicontract.it

FOLLOW US

@ radici1950 | radicimarine

in Radici Contract | Radici Marine

f Radici Contract | Radici Marine

Radici Pietro Industries & Brands
info@radici.it

RADICI 
CARPET STUDIO

