



THE
SECRET
GARDEN

RADICI
marine



RADICI
marine

Like whispers from a bygone era, the designs in this catalogue draw inspiration from the traditional graphic techniques of linocut and woodcut. With soft lines that speak of a gentler time, these techniques were once used to craft botanical engravings that capture the delicate beauty of nature.

And yet, in this collection, nature is not merely a subject to be replicated. Rather, it is a starting point for endless creative exploration, an inspiration that leads to nuanced and adaptable illustrations that fit seamlessly into modern interiors.

With 57 textures, each imbued with the precision of Chromoject technology, this collection offers a wealth of possibilities for every need and desire. From bold statements to subtle accents, each design is a testament to the enduring power of nature and the beauty that it can inspire.

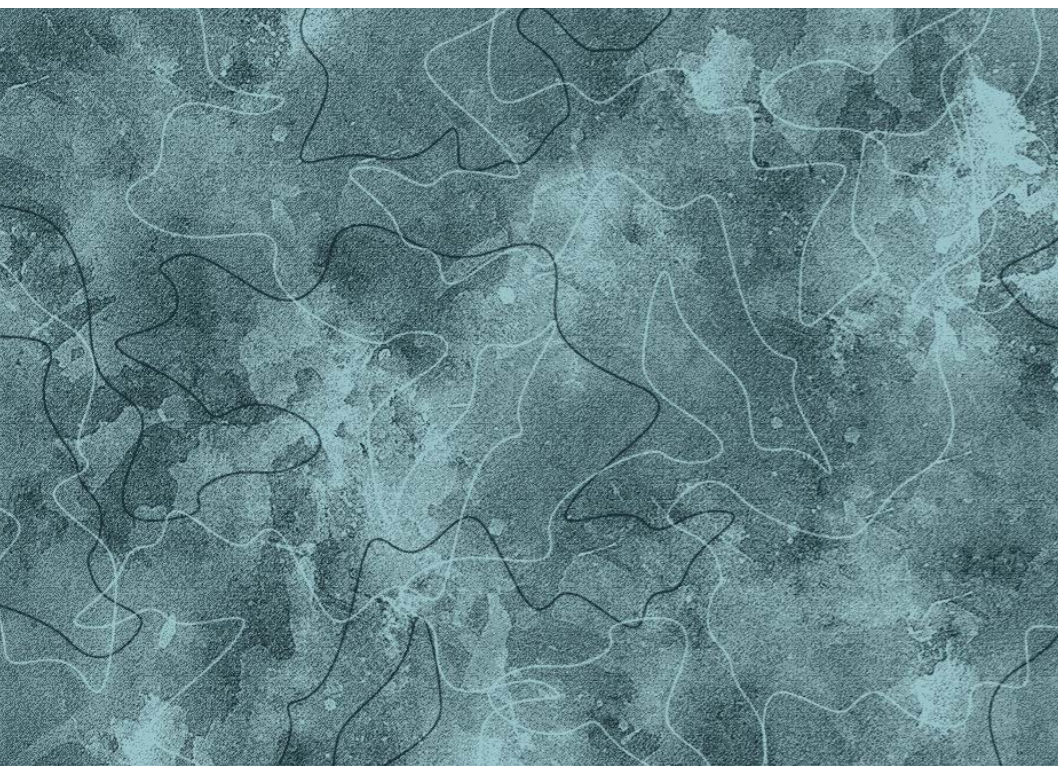
**FIND INSPIRATION IN
THE BEAUTY OF NATURE.**

The Secret Garden
by Dorota Urbaniak

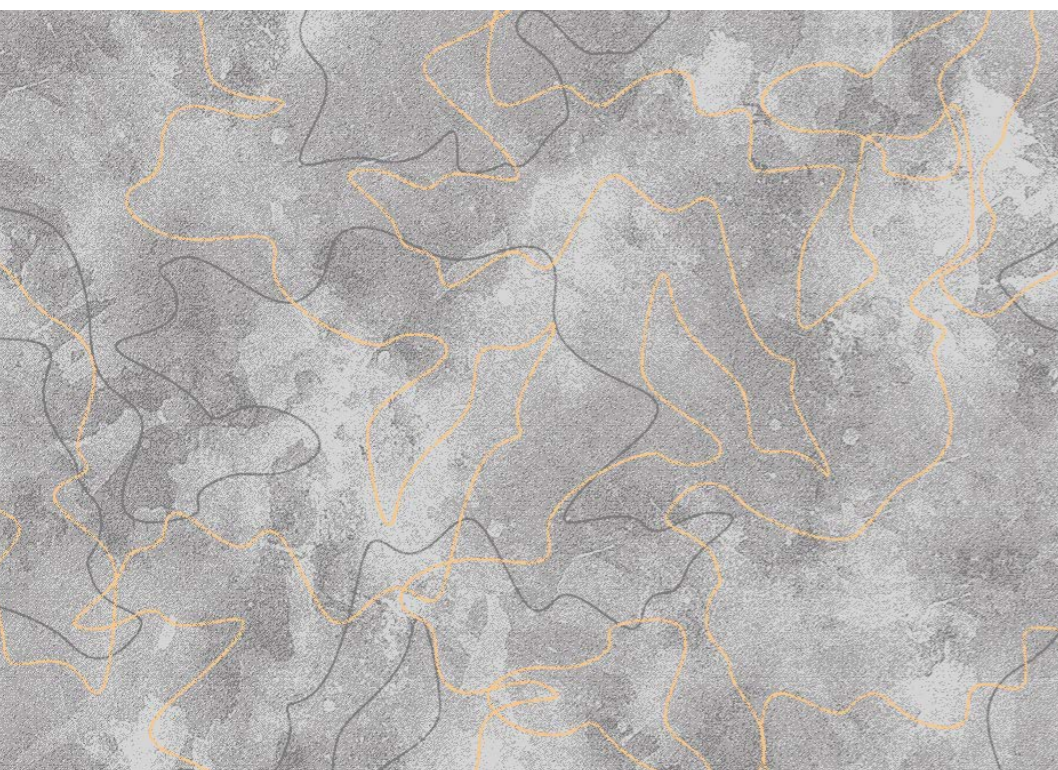


Botanical

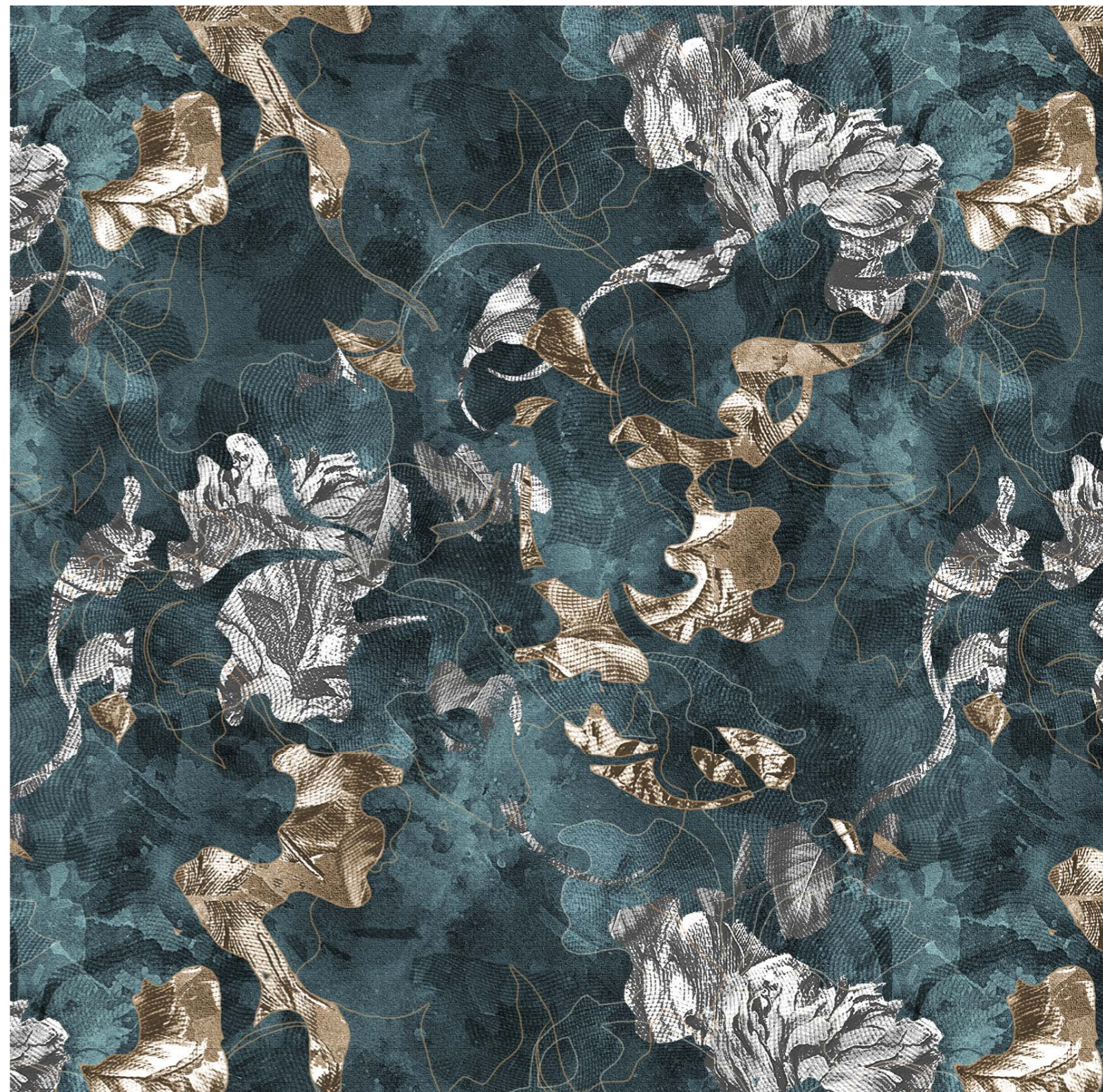




Tide



Wave

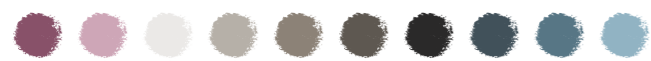


Petal





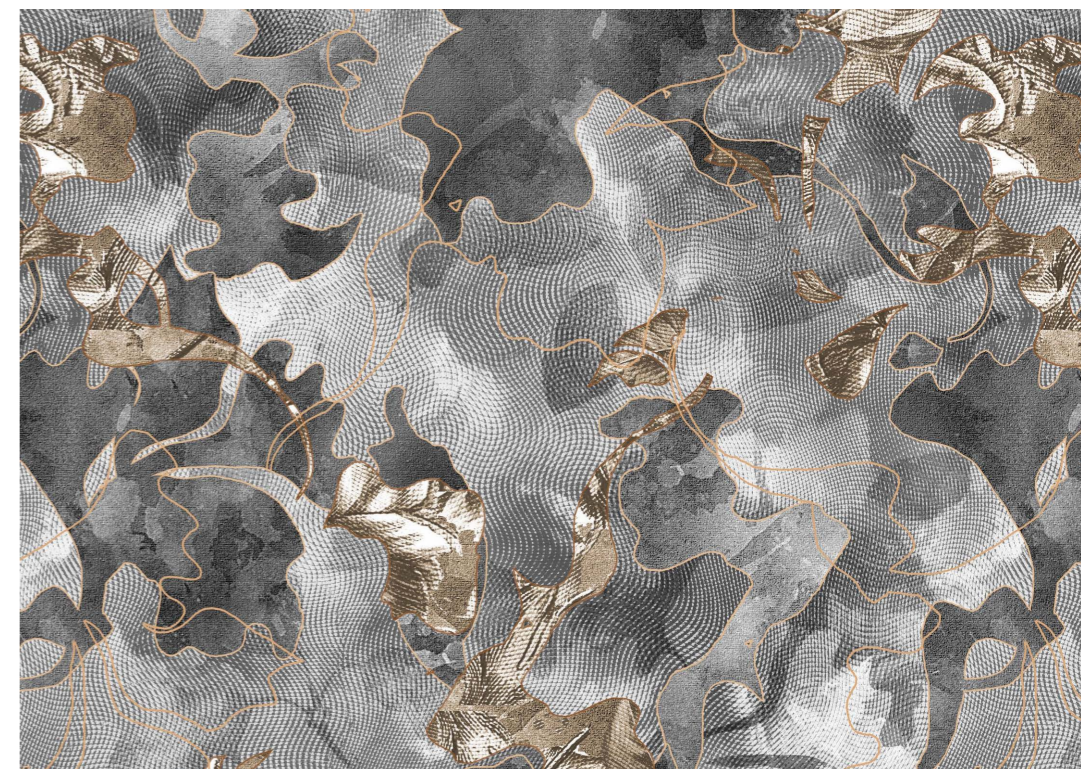
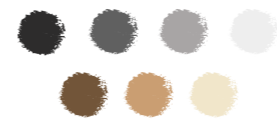
Peonies

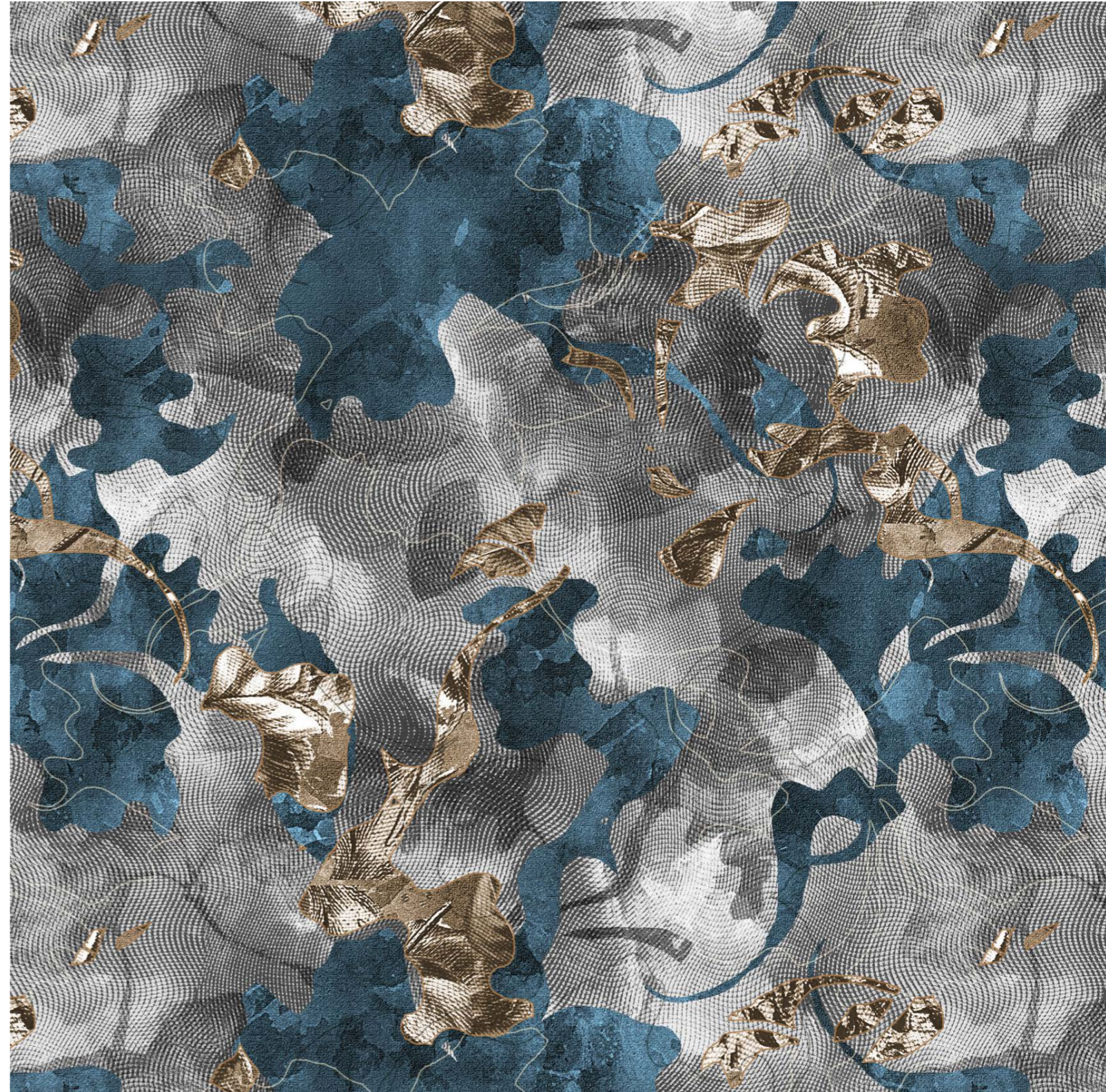


Silver clouds



Golden clouds





Bluebell



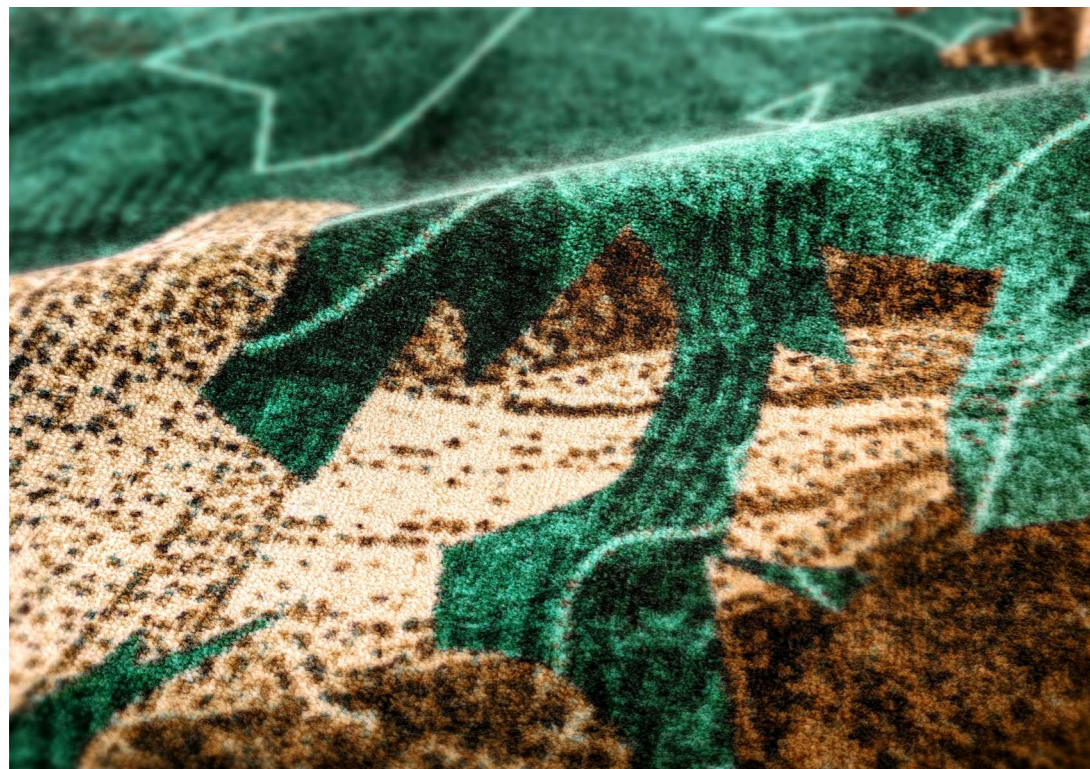


Thunder



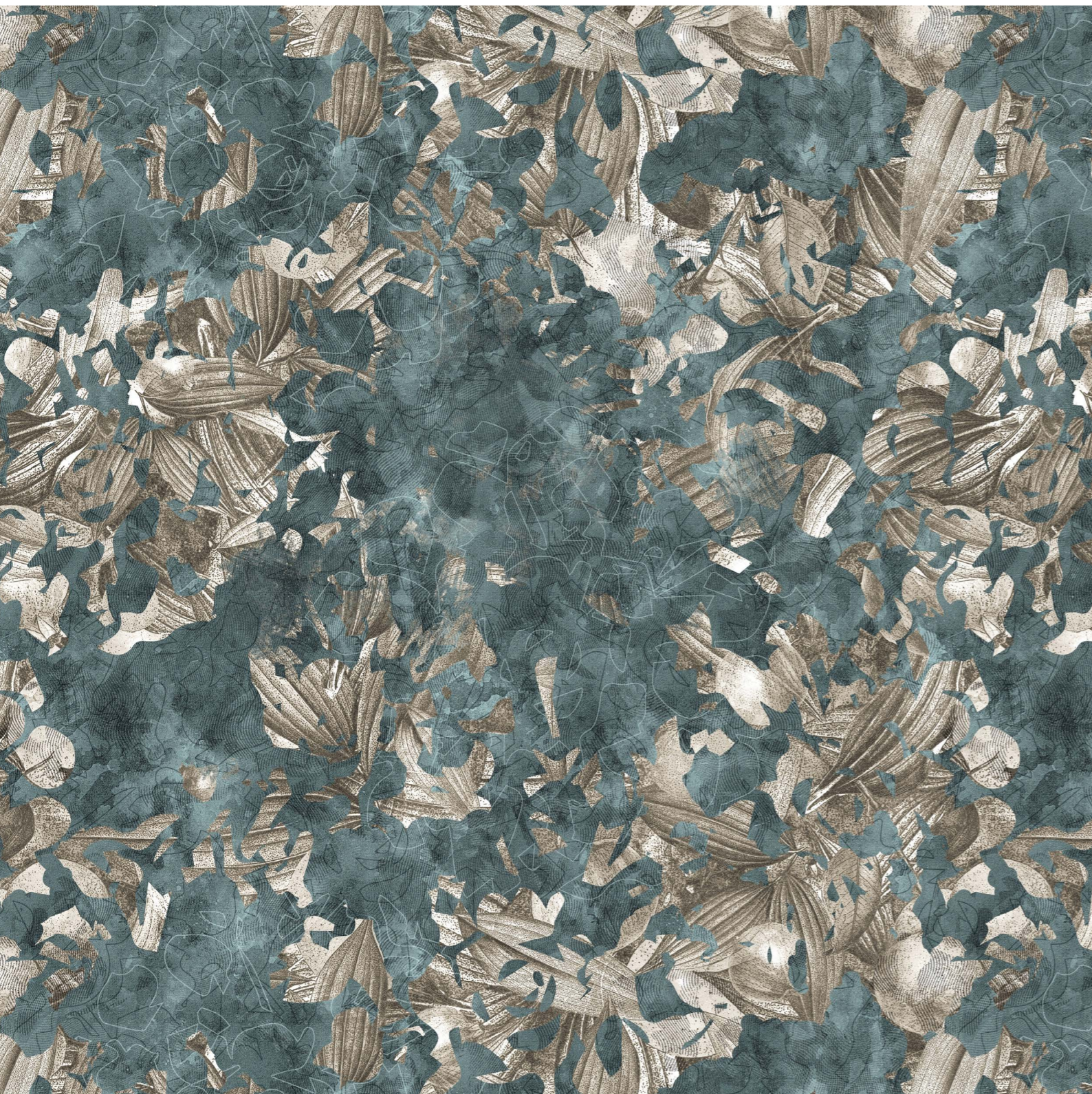
Wildflower





Leafy

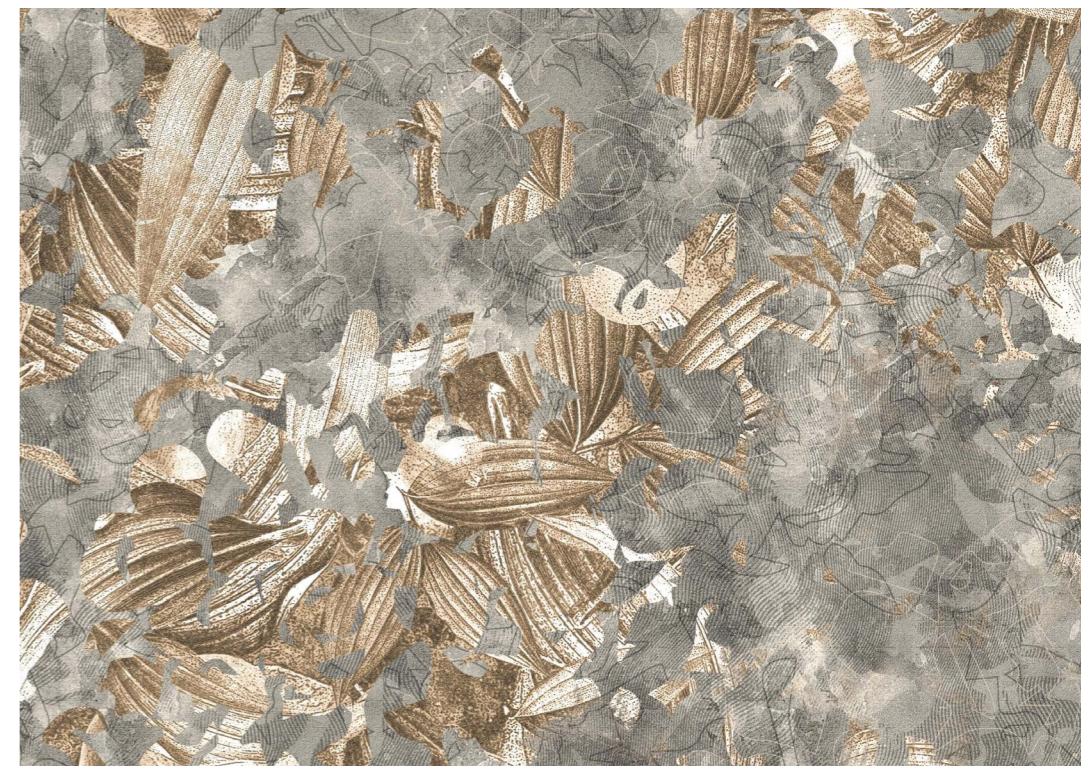
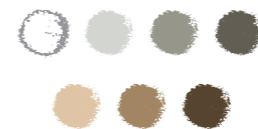




Foliage

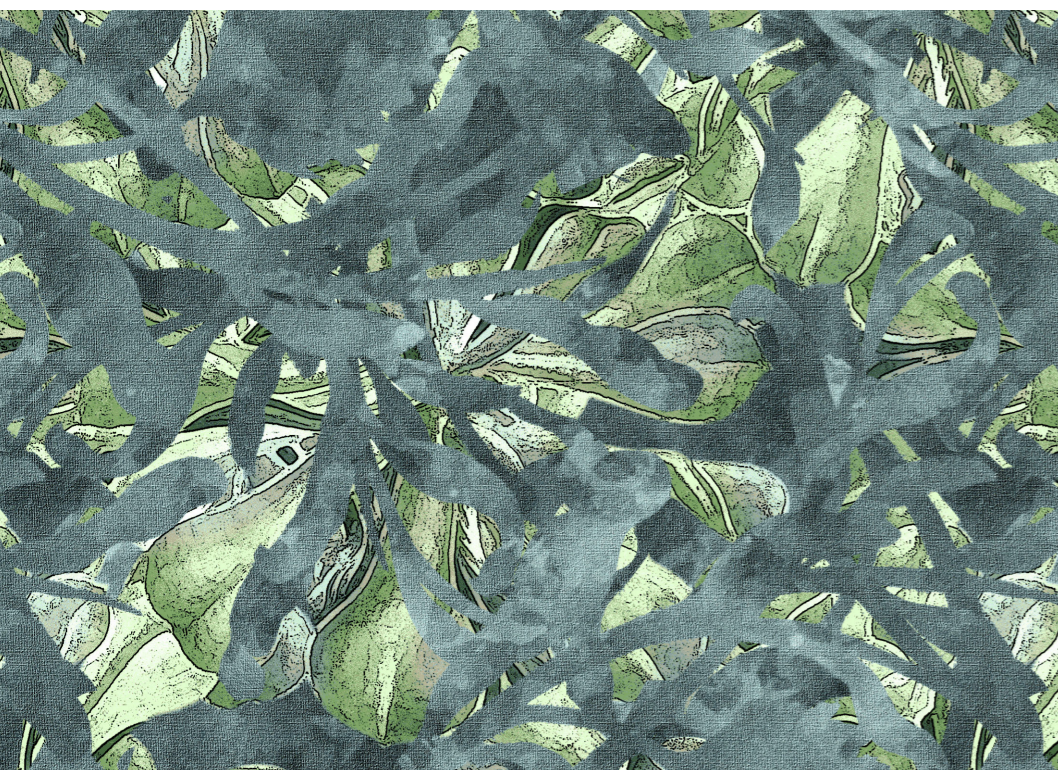
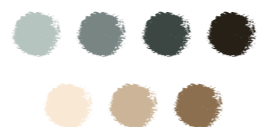


Quince

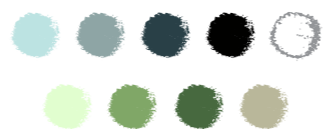




Serenity



Jungle



Tropical

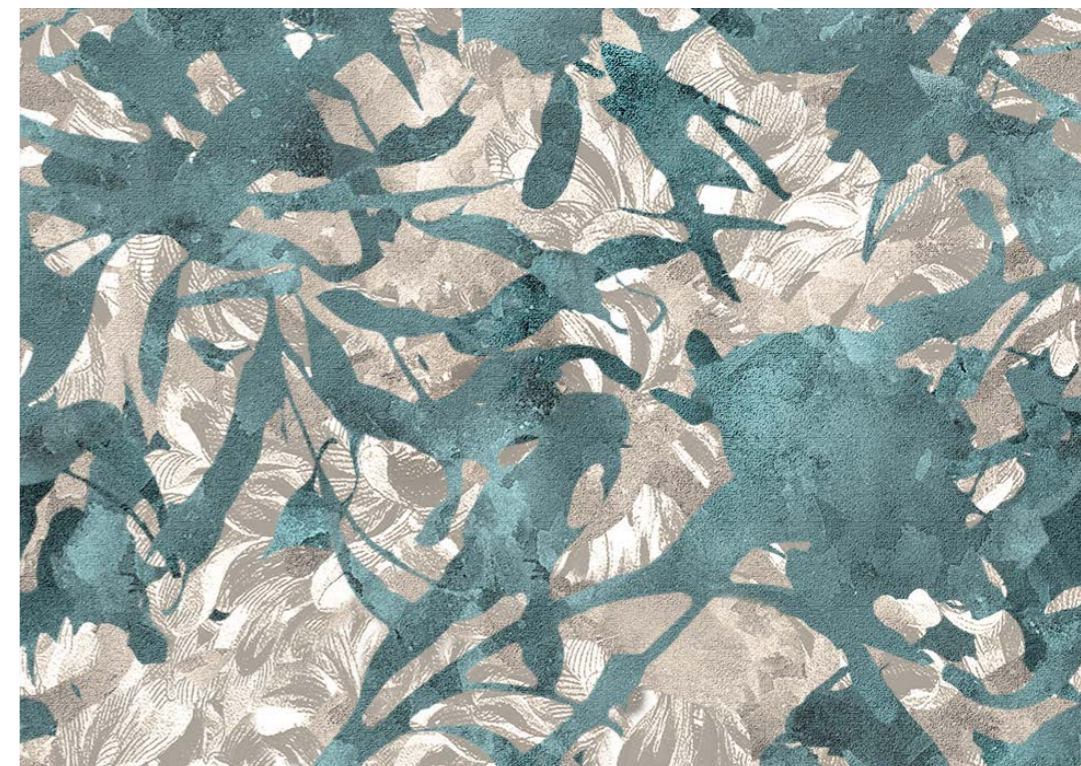
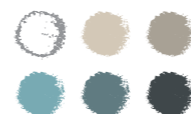




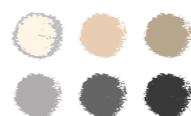
Gale

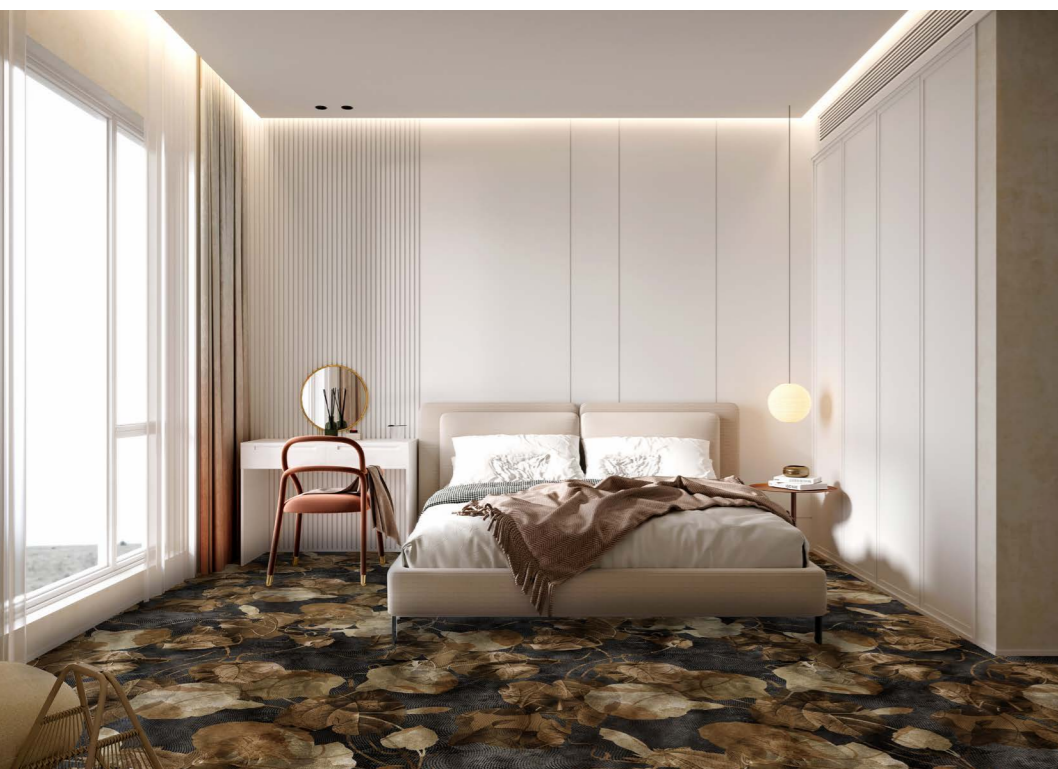


Breeze

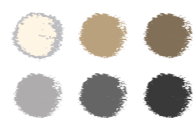


Wind



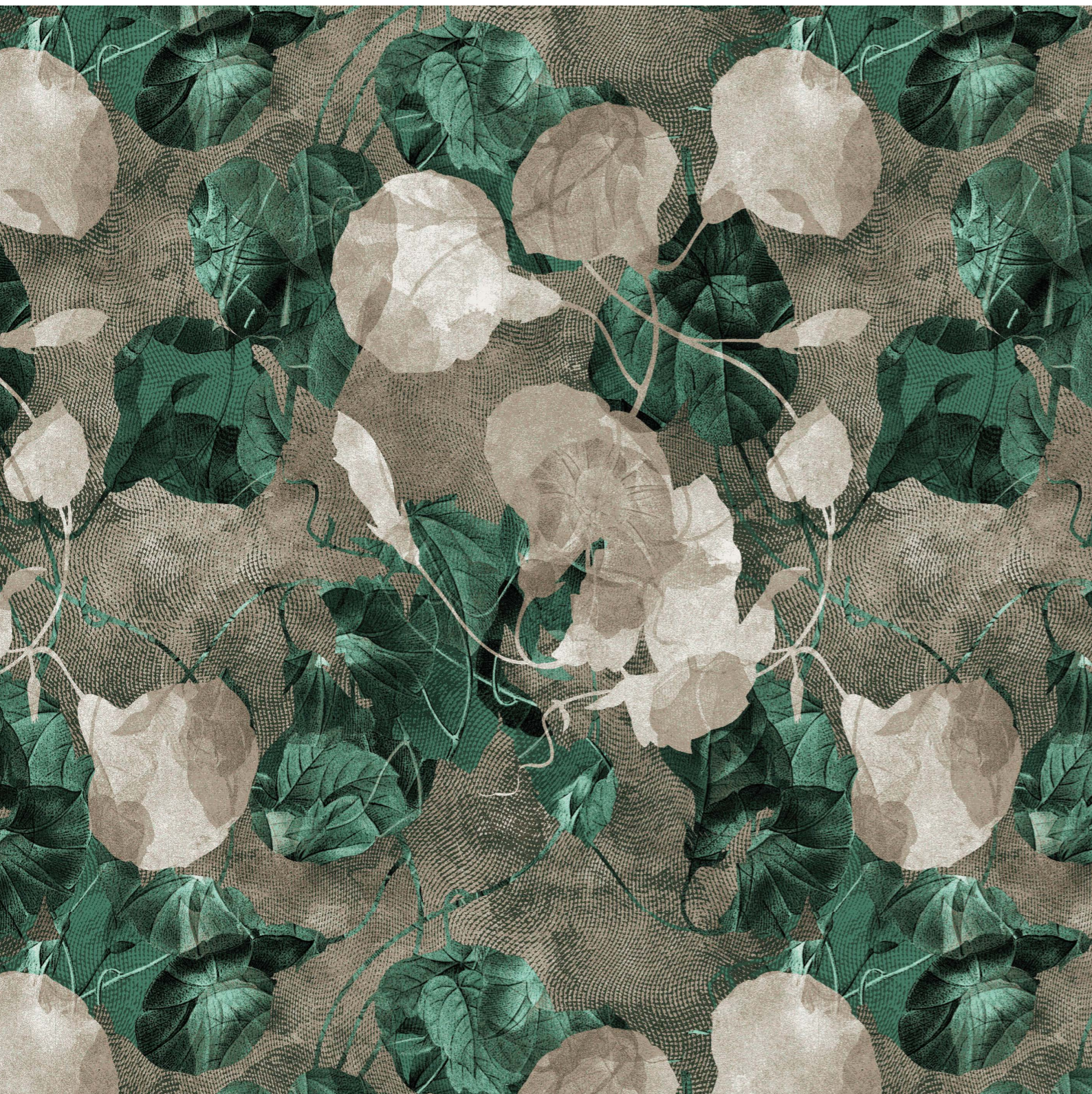


Marigold



Magnolia

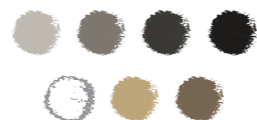




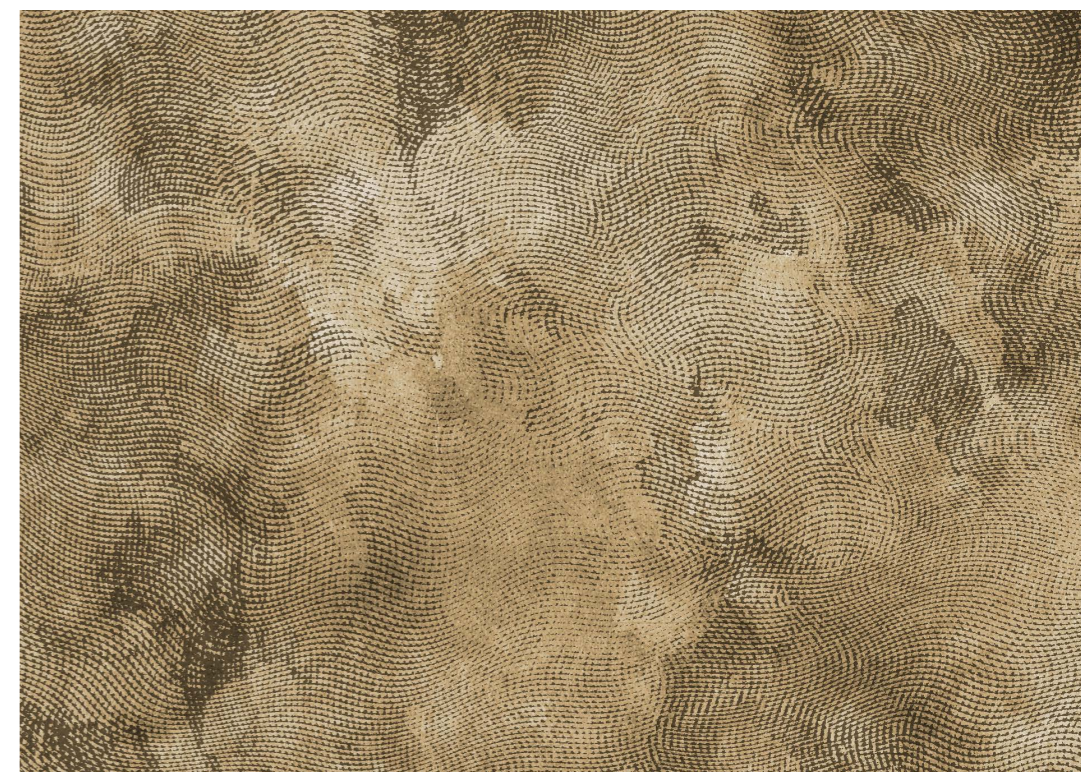
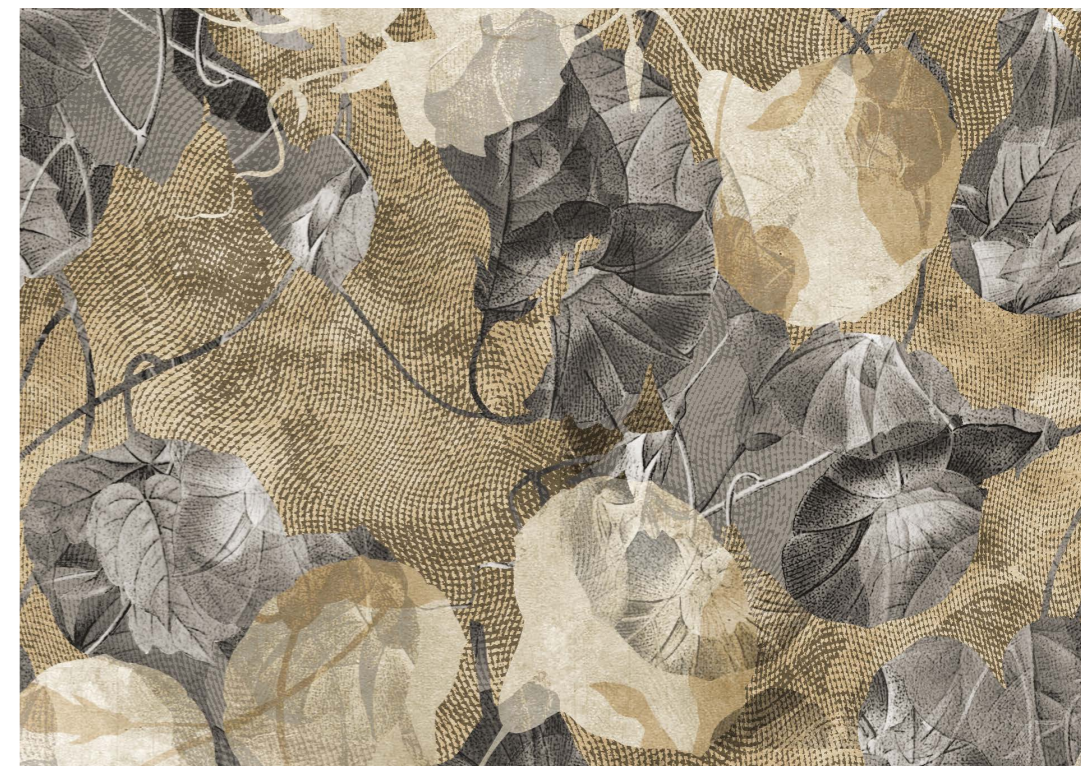
Vines



Yarrow



Gentle

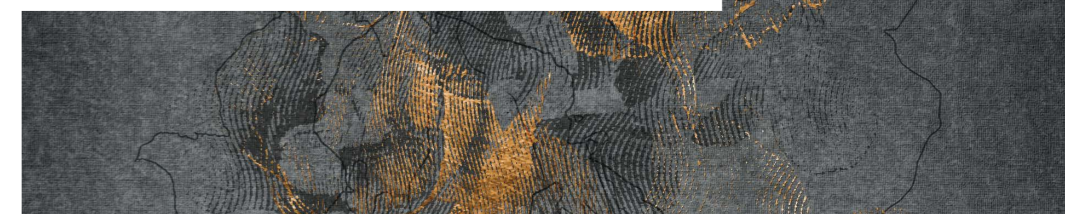
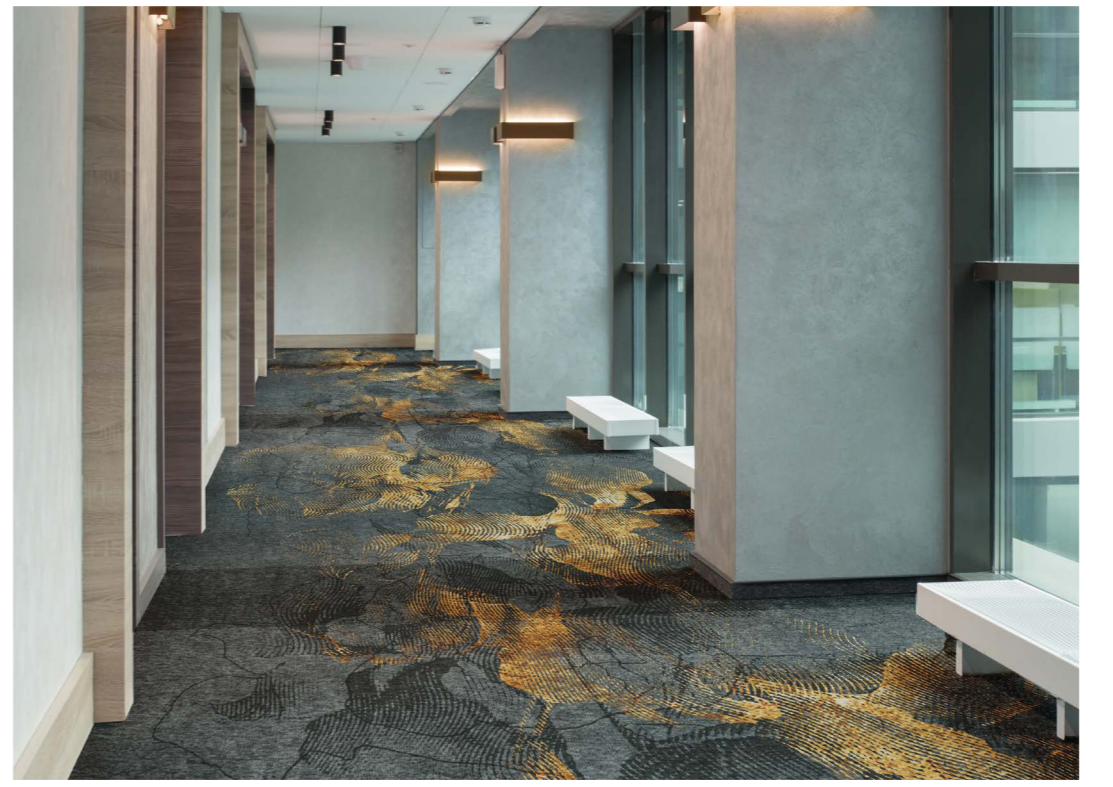
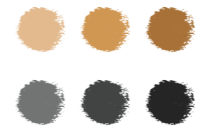




Bouganville



Blooming

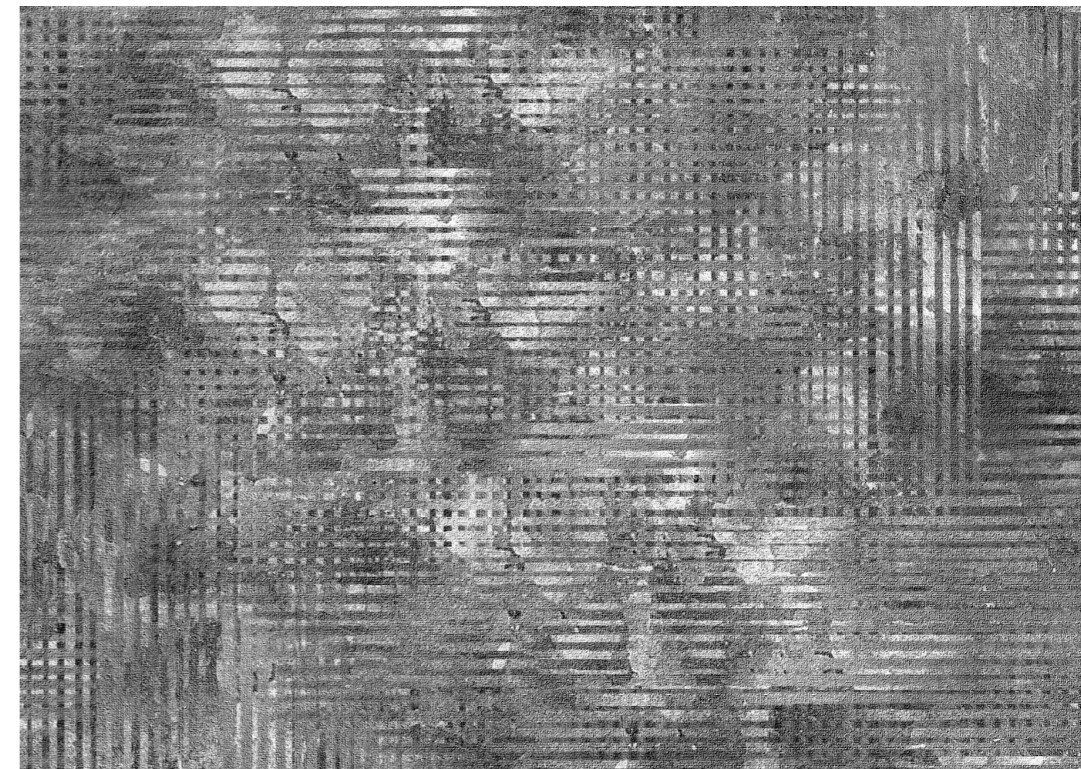




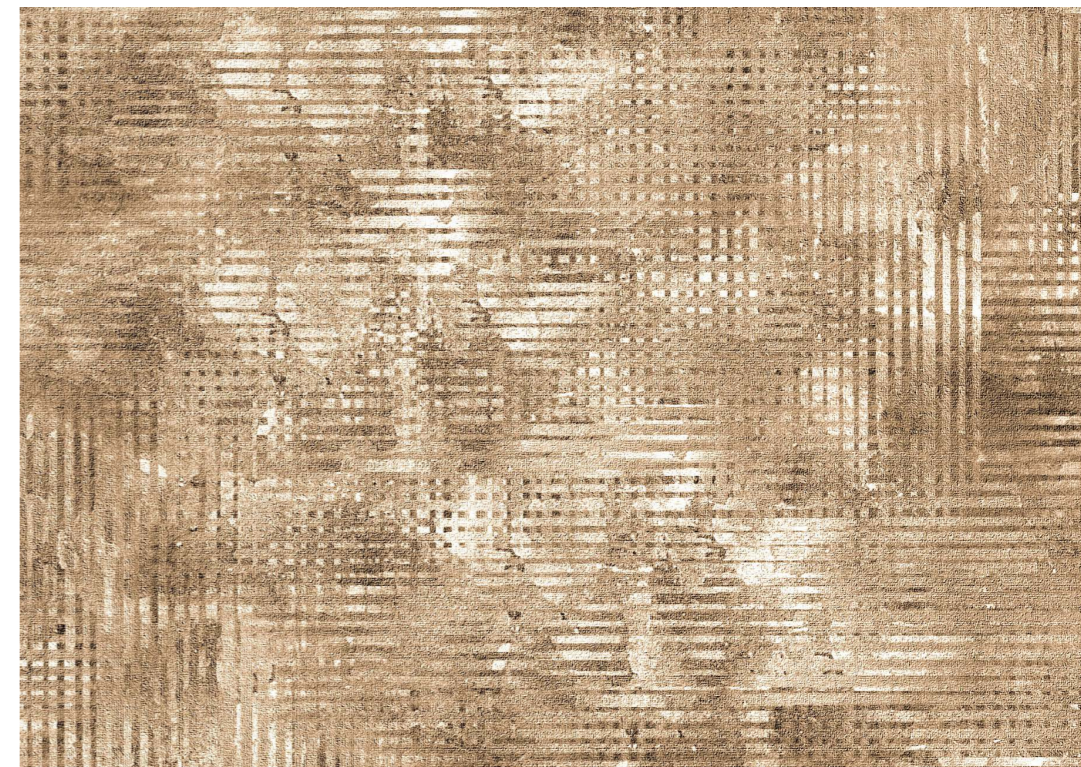
Iris



Illusion



Lino

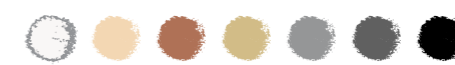


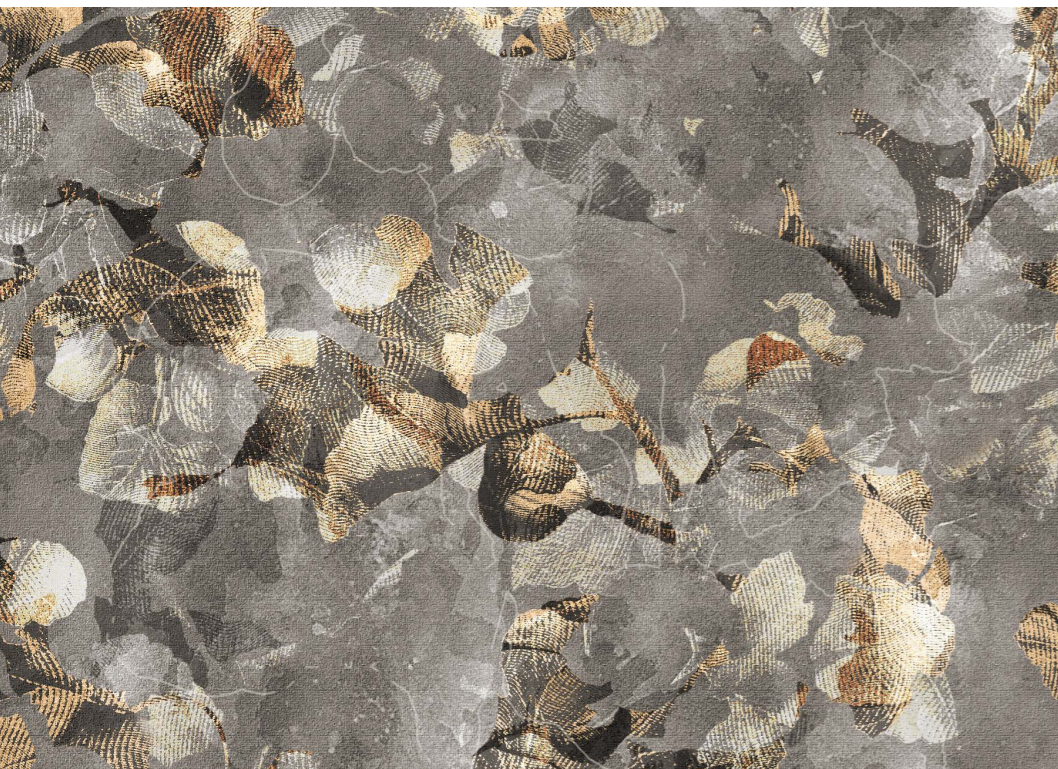


Camelia

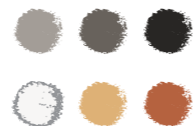


Elderflowers

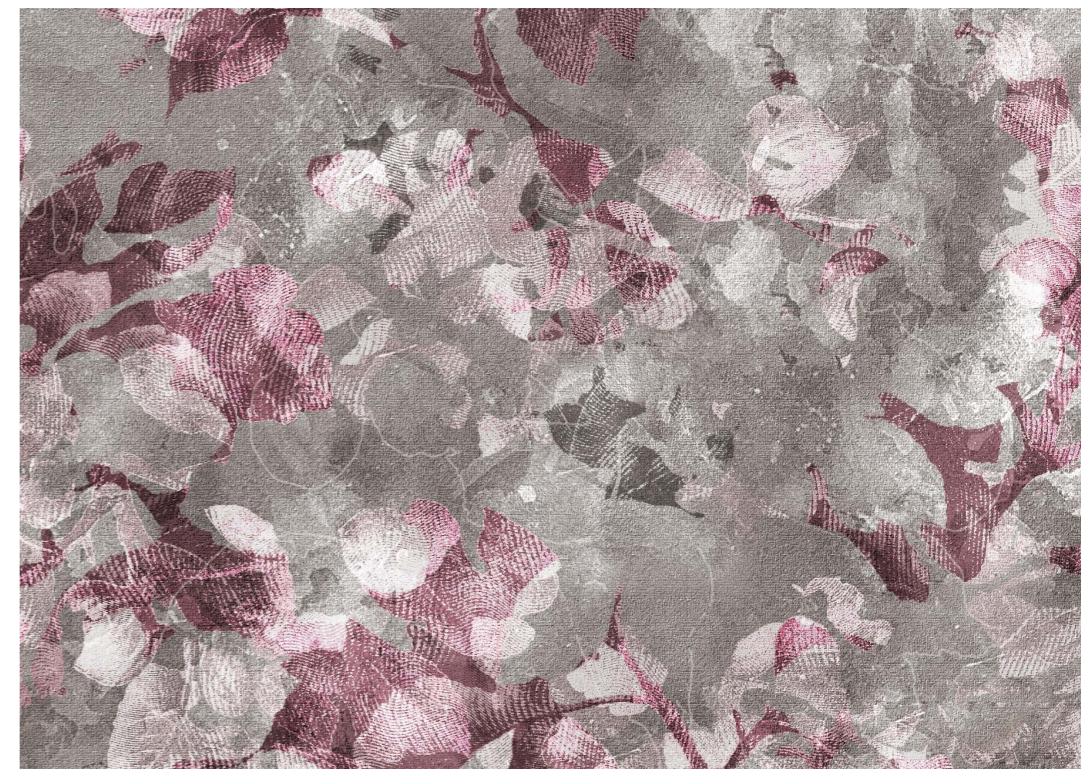




Citrus

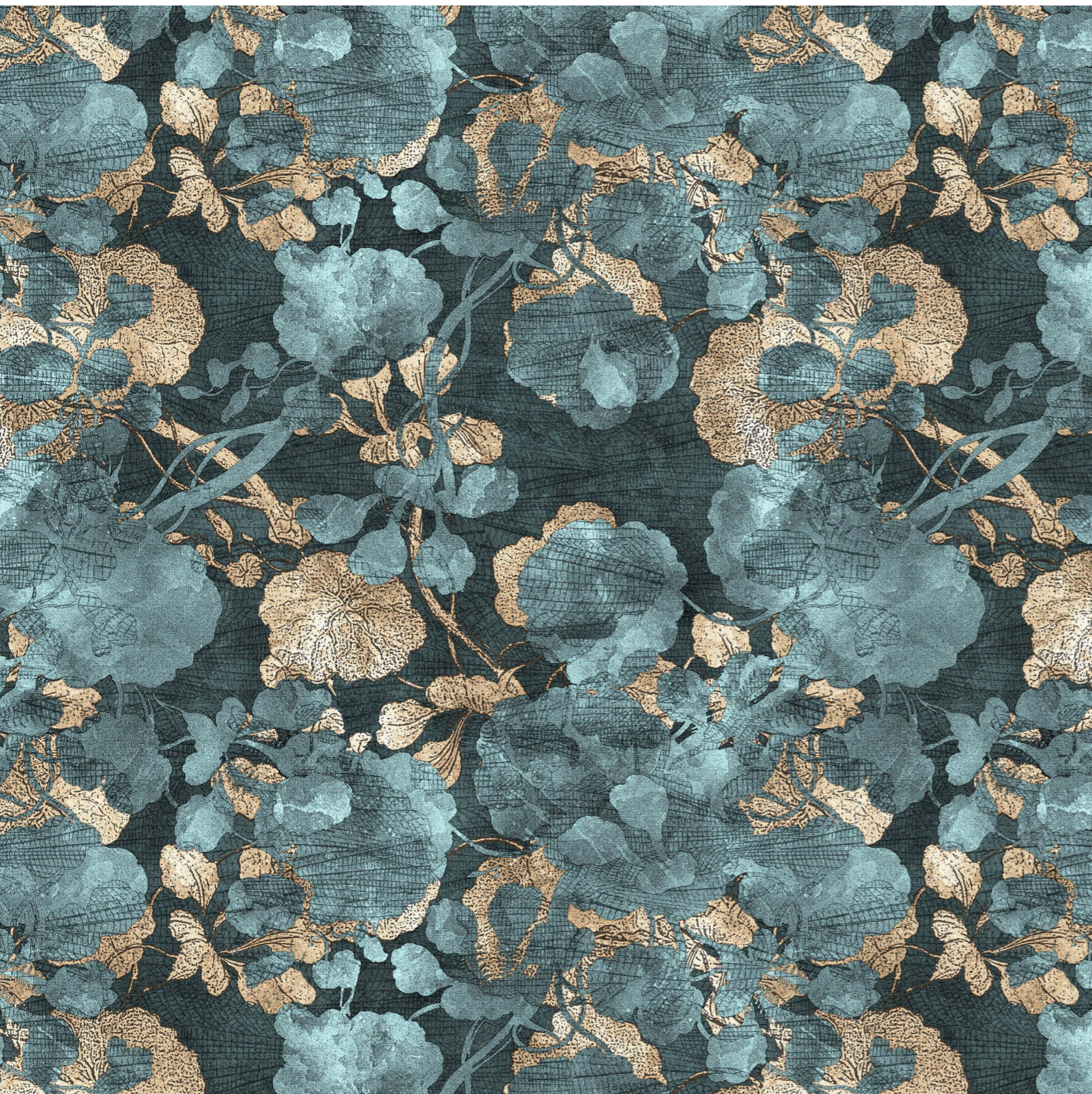


Freesia



Lilium





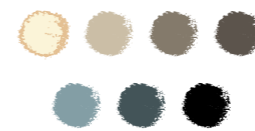
Lea



Twig

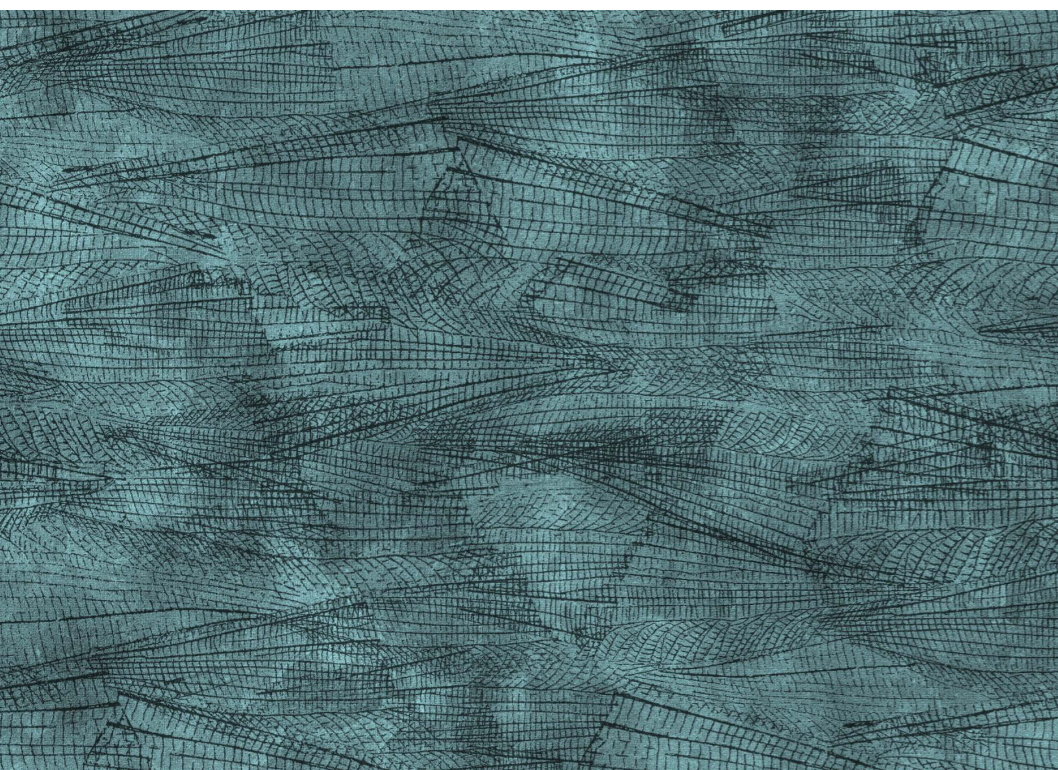


Meadow

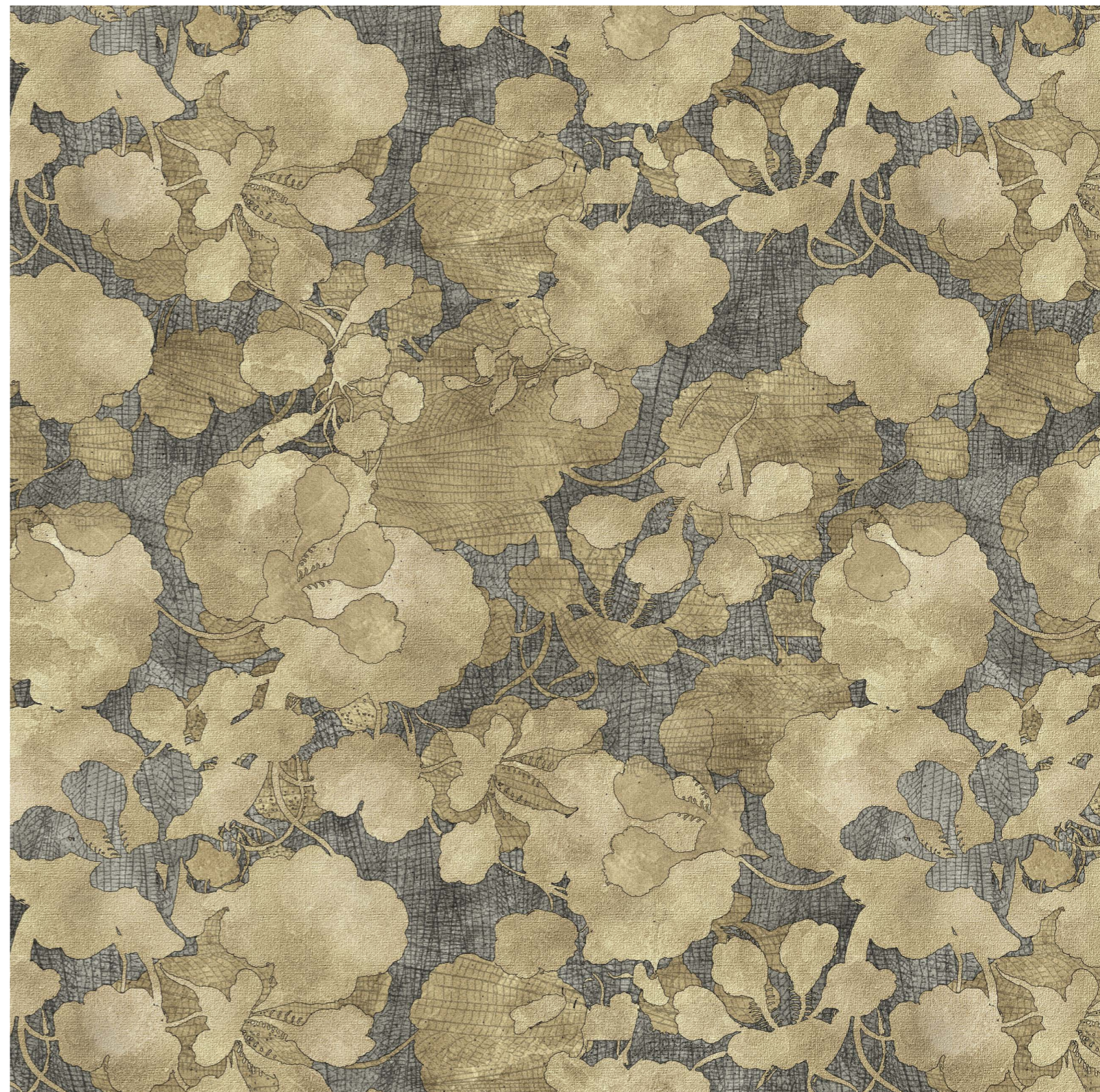




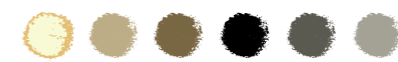
Ginger

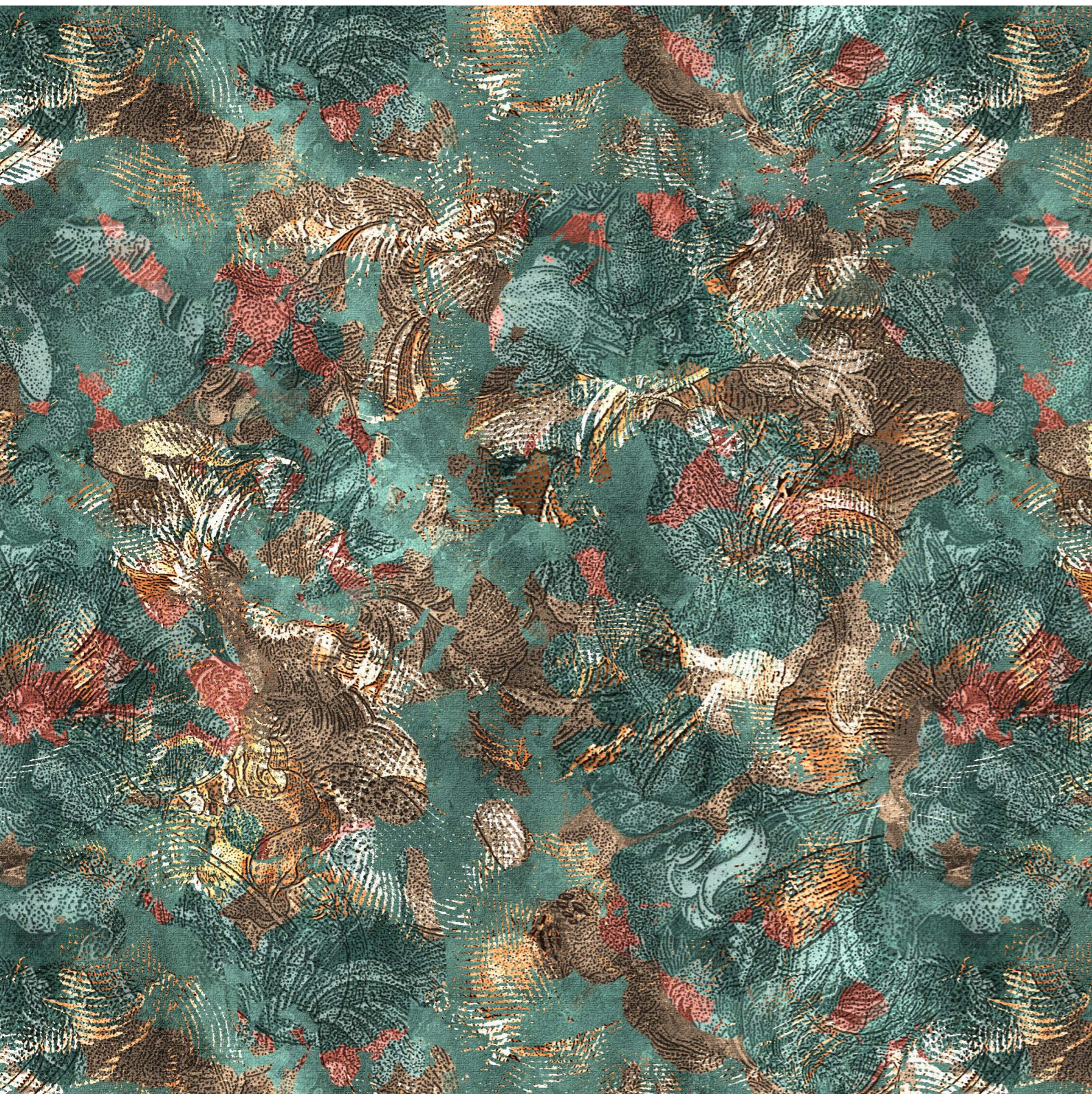


Mint

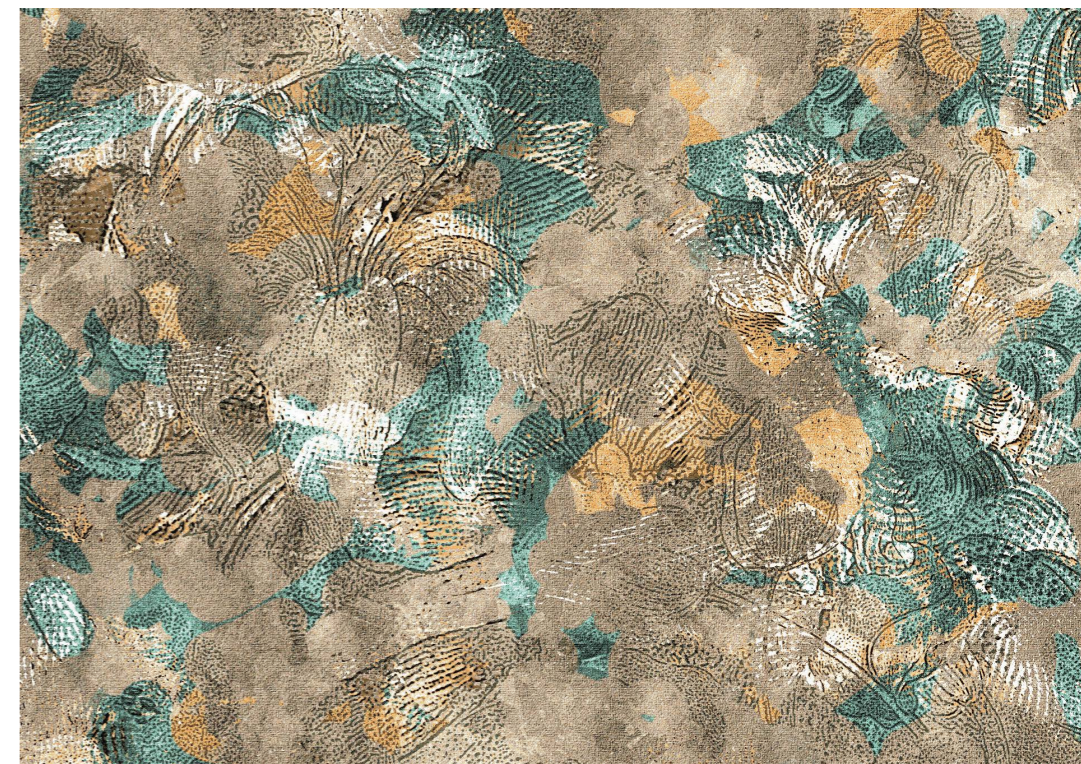


Mystic

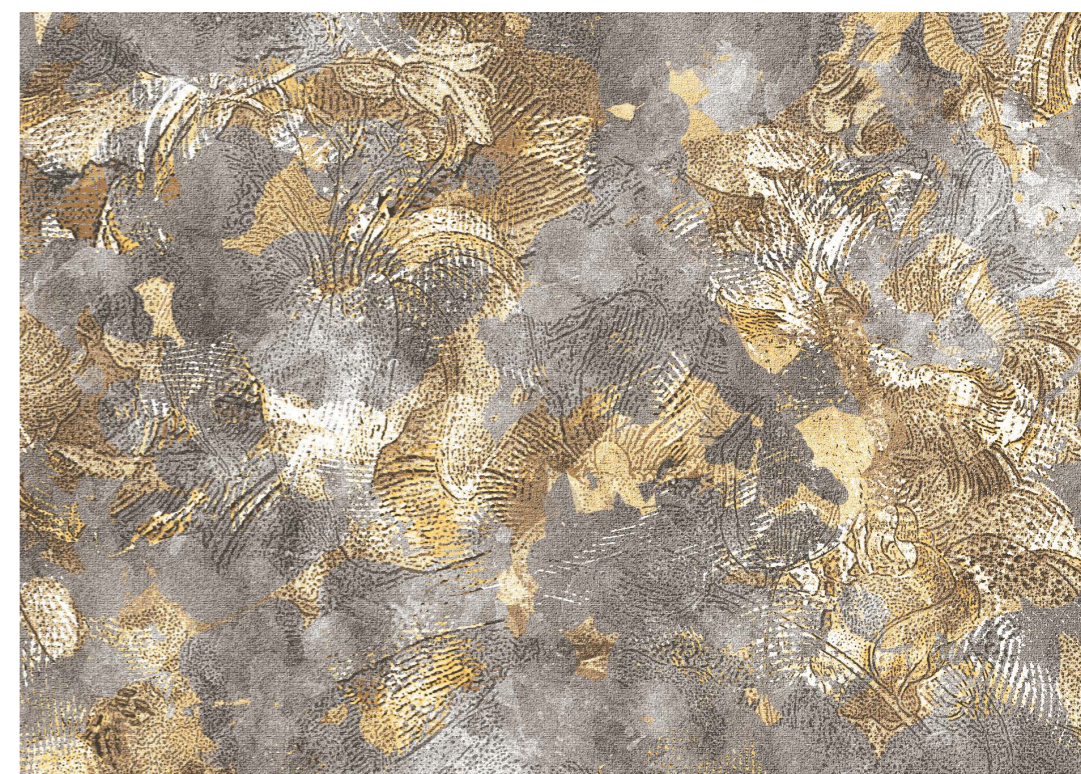
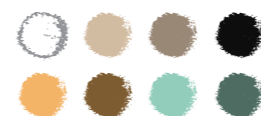




Oasis



Dew

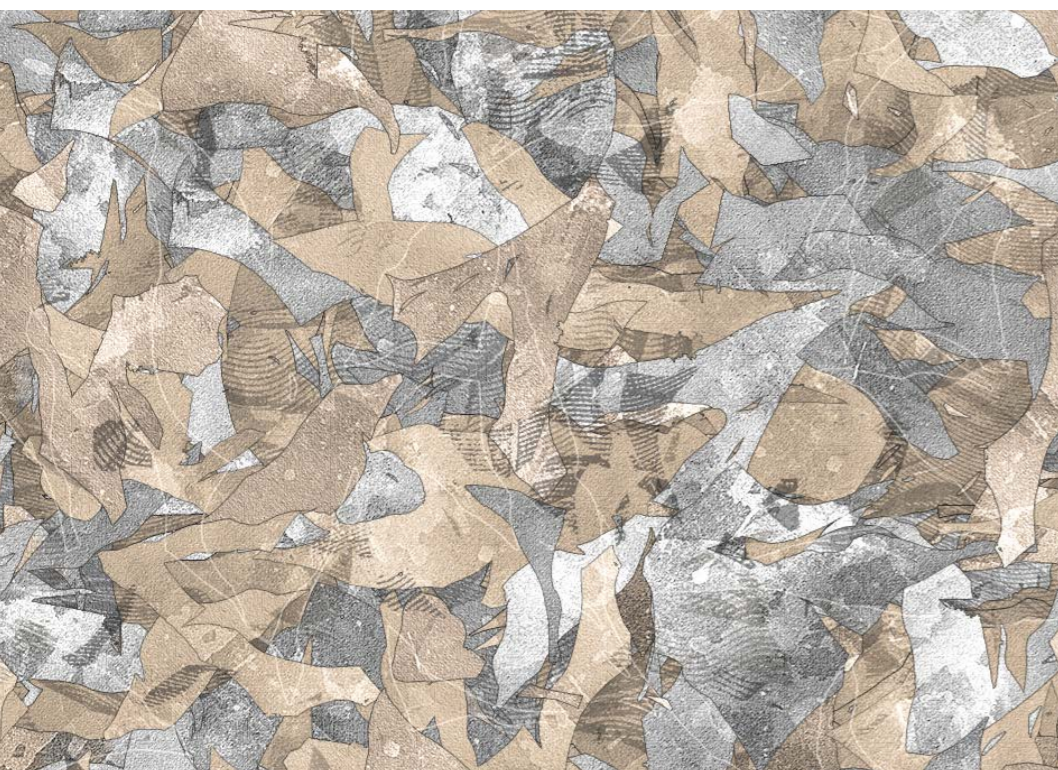


Harvest

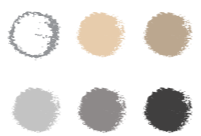




Turmeric



Chamomile

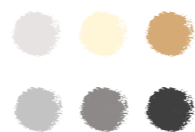


Pepper

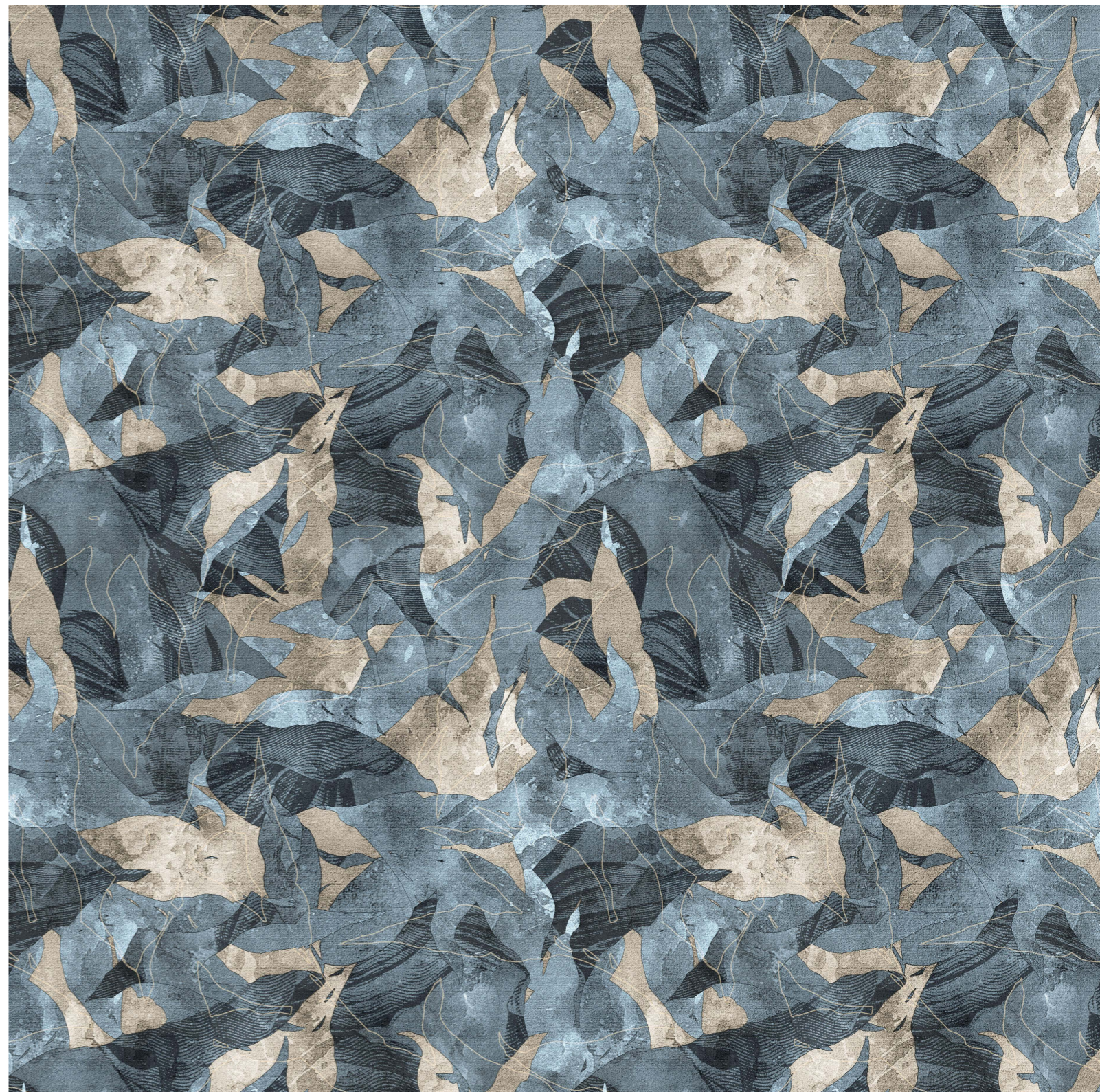
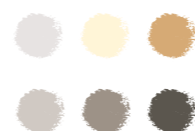




Nutmeg

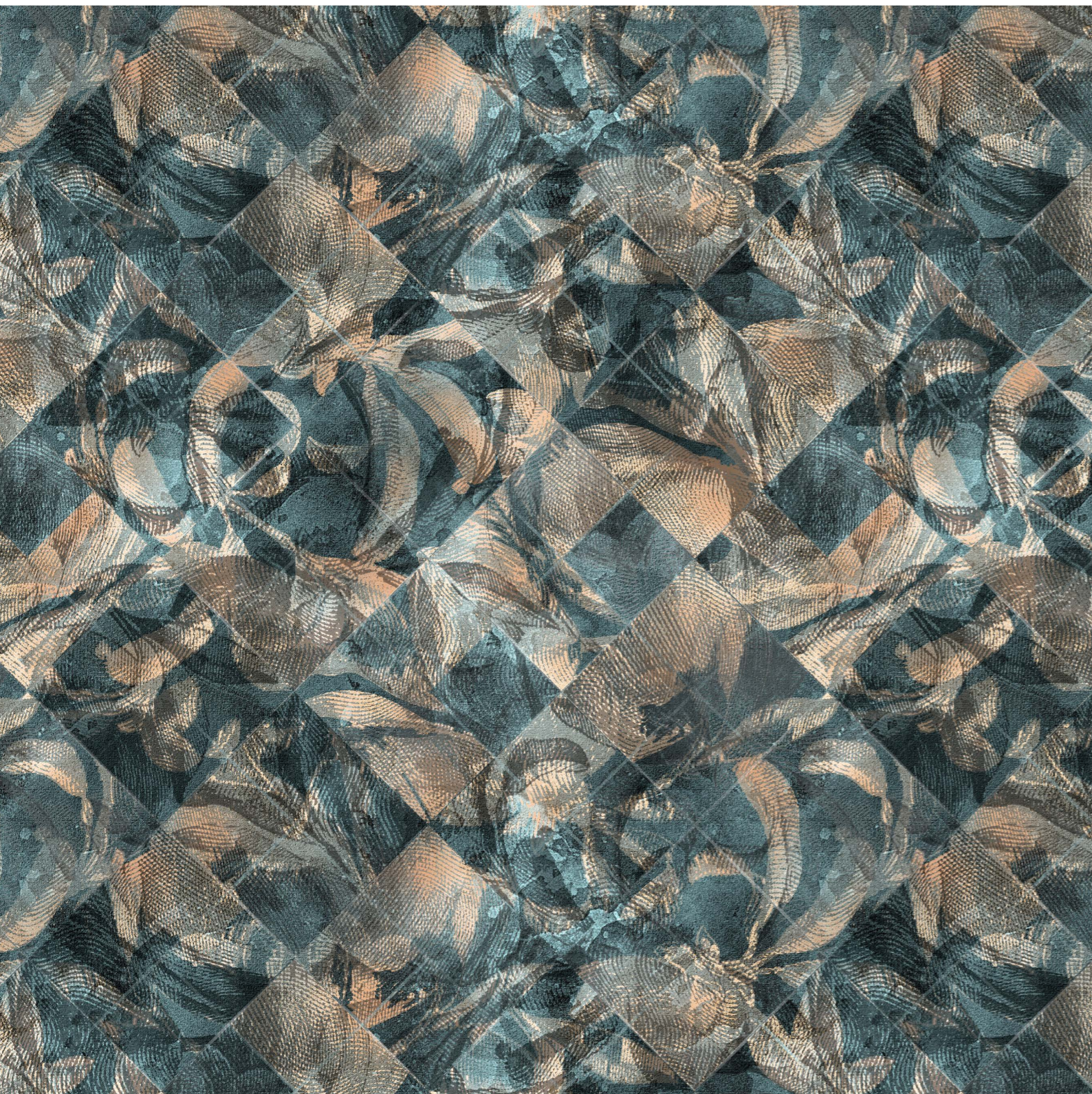


Coriander



Poppy

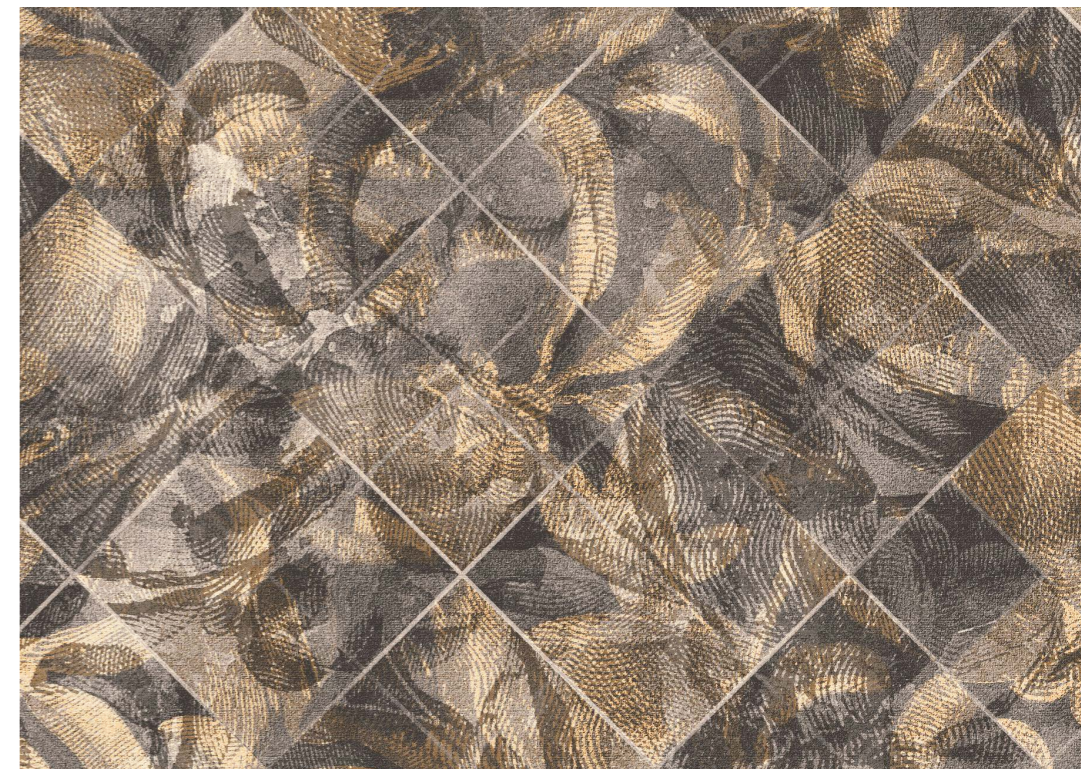
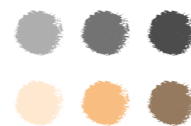




Elm



Oak





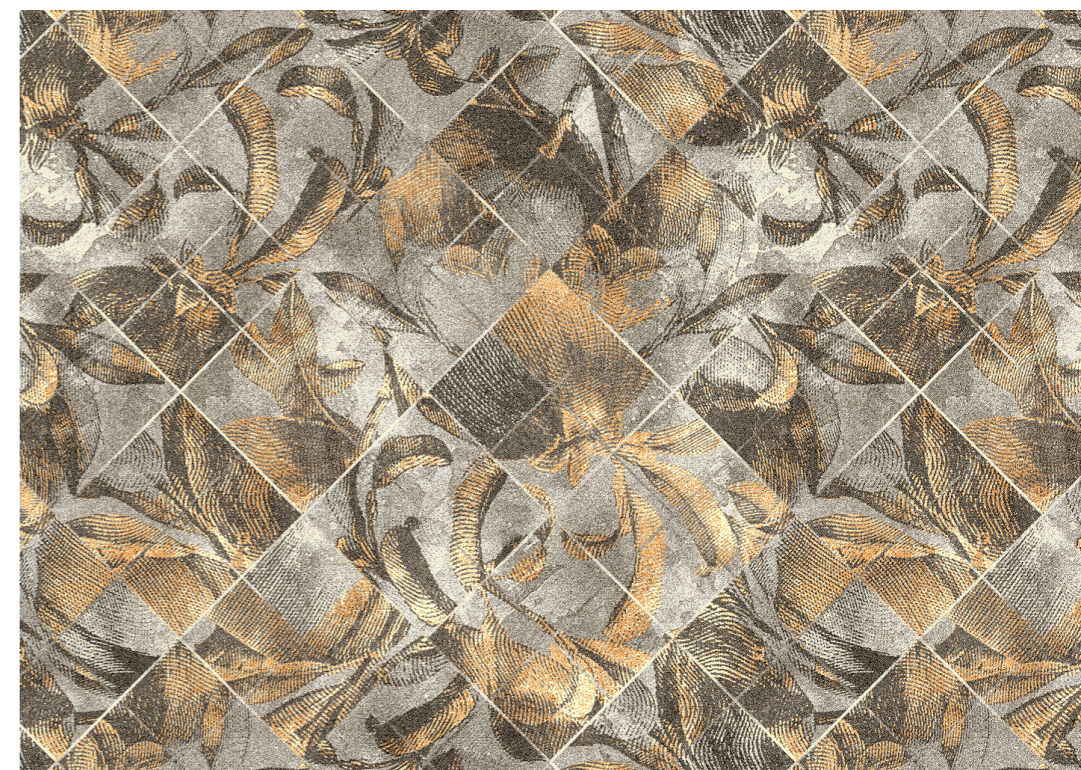
Birch



Linden



Ash



Willow

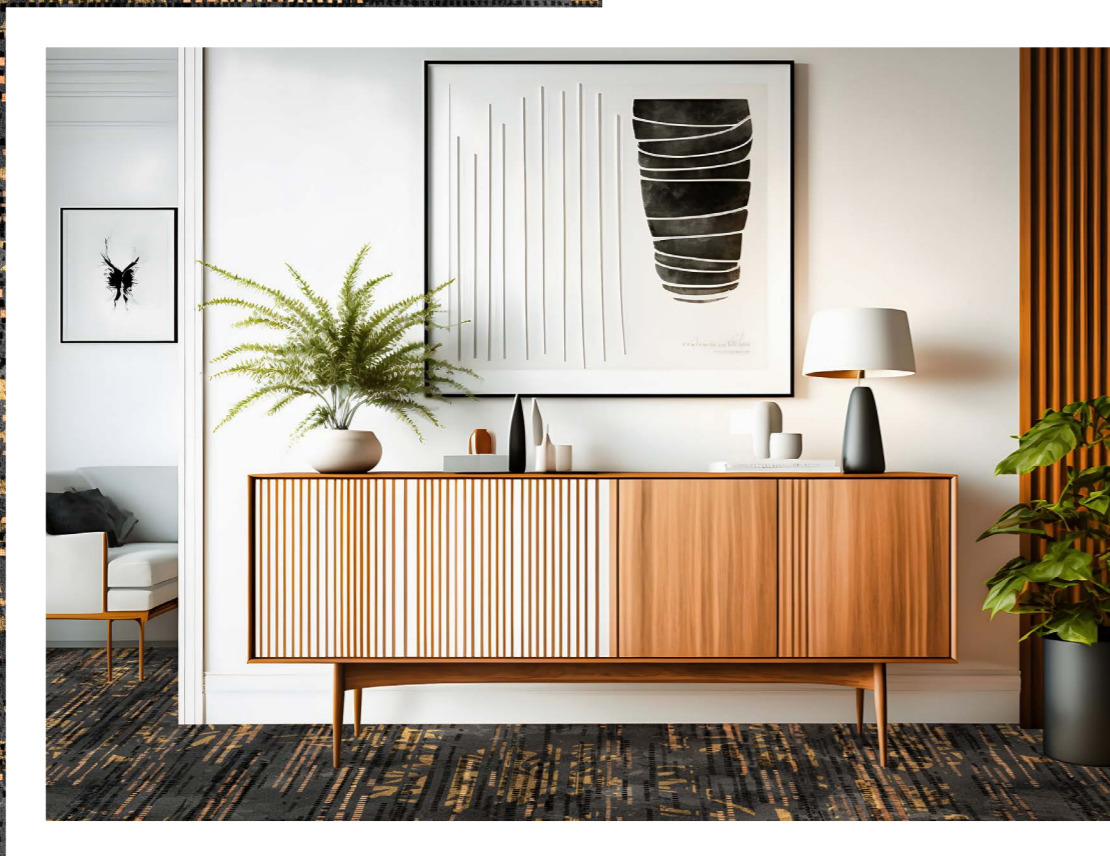
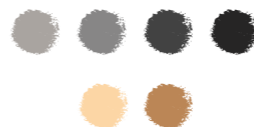




Forest



Wood



Flow

WALLPAPER COLLECTION



THE PERFECT MATCH

Experience the magic and take your design to the next level with the enchanting allure of our new wallpaper collection.

Pair them with our textile flooring for a range of captivating patterns and textures that can be seamlessly integrated into various surfaces, elevating the overall aesthetic appeal of any space.

Our team of designers has crafted a collection of designs that not only stand out on their own but also complement our patterned carpet flawlessly.

Our collection showcases a wide range of designs, from bold geometric shapes to subtle textures that bring richness and complexity to any space.

Our wallpaper collection is made of premium materials that are effortlessly easy to clean and maintain. It includes a variety of color options, ranging from neutral tones to vibrant bold ones, that perfectly complement your unique style and aesthetic.



RADICI marine

RADICI PIETRO INDUSTRIES & BRANDS S.P.A.

www.radicimarine.it - info@radicimarine.it - +39 035 0950 231

[in f](#) Radici Marine [@](#) radicimarine